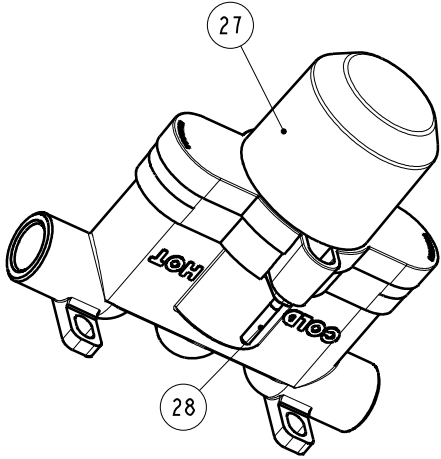
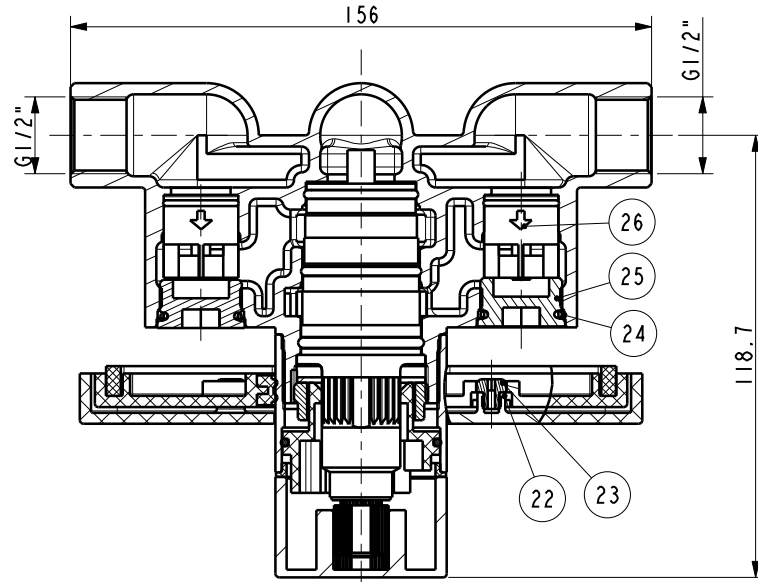
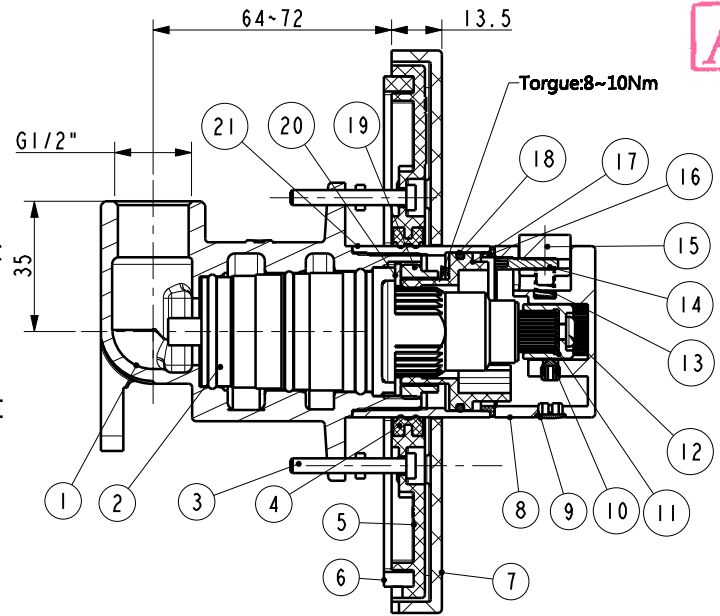
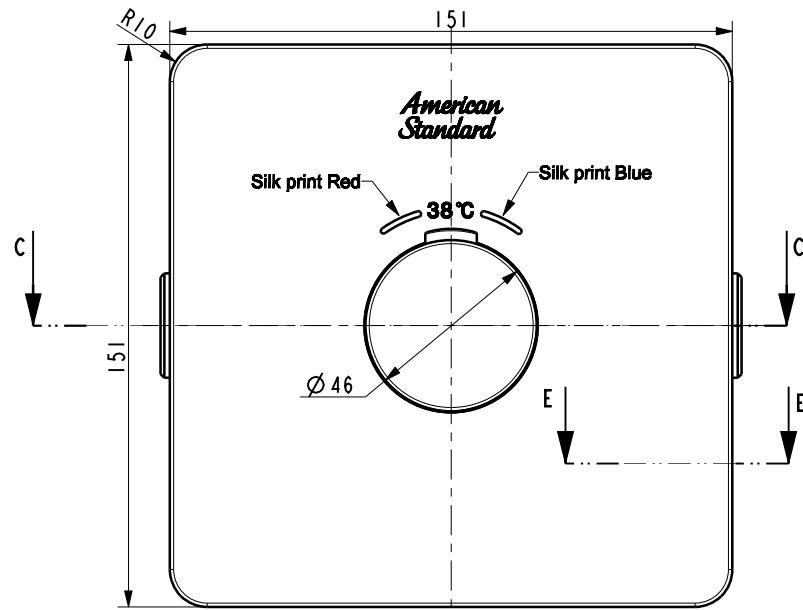


Tolerance, Unless Otherwise Stated, Is		
Above 0.5 to and including 6	±0.1	
Excess 6 to and including 30	±0.2	
Excess 30 to and including 120	±0.3	
Excess 120 to and including 315	±0.5	
Excess 315 to and including 1000	±0.8	
Excess 1000 to and including 2000	±1.2	



28	FF1-CN521N00000194	Screw	SUS304	2	
27	FF1-CN521Z00004599	Protect Cover	PP	1	
26	FF1-CN521Z00000312	Check valve D20	Assembly	2	Neoperl NO. is 31 4220 0
25	FF1-CN521N00000049	Nut	Hpb59-1	2	
24	FF1-CN521G00000107	O Ring 18*72	EPDM	2	
23	FF1-CN521J00000214	Screw	Hpb59-1	4	
22	FF1-CN521G00000291	O Ring(7X2)(Water Mark)	NBR	4	
21	FF1-CN521J00107ALB	Bushing	HPb59-1	1	
20	FF1-CN521Z00000143	Washer	SUS304	1	
19	FF1-CN521N00000048	Cartridge Lock Nut	HPb59-1	1	
18	FF1-CN521G00000131	O Ring φ 36*2	NBR	1	
17	FF1-CN521Z00000144	Temperature restrictor	POM	1	
16	FF1-CN521W00000013	Handle Washer	PA66	1	
15	FF1-CN521J00109ALX	Bushing	ZnAl4-1	1	
14	FF1-CN521N00000140	Screw M3X17	SUS304	1	
13	FF1-CN521Z00000182	Spring	SUS304	1	
12	FF1-CN521N00000130	Screw M4X12	SUS304	1	
11	FF1-CN521J00000196	Handle Adapter	HPb59-1	1	
10	FF1-CN521N00000228	Handle Screw	SUS304	1	
9	FF1-CN521ZAL004950	Index	ABS	1	
8	FF1-CN521L000050ALX	Handle	ZnAl4-1	1	
7	FF1-CN521FAL000265	Escutcheon	ABS	1	
6	FF1-CN521K00000034	Washer	EVA	1	
5	FF1-CN521F00000014	Fixing Plate	ABS	1	
4	FF1-CN521G00000206	Sealing	NBR	1	
3	FF1-CN521N00000185	Screw	SUS304	2	
2	FF1-CN521C00000012	Thermostatic Valve	Assembly	1	
1	FFZZ0021-0010699MC	Body	BSC3(DZR)	1	

NO.	Part NO.	Description	Material	QTY	Surface Treatment
DESIGNED	利华沃	20221221	TITLE		
CHECKED	<i>[Signature]</i>	2022.12.21	REF		
APPROVED	<i>[Signature]</i>	2022.12.21	Conceal Thermostatic Mixer with Trim_Bushed Hard Graphite		
SCALE	MATERIAL	WEIGHT	DWG NO.		
0.7:1	Assembly		FFAS0930-709AL0BF0		

SECTION C-C
E-E

REV	DESCRIPTION	DATE	NAME

