

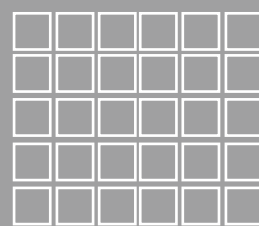
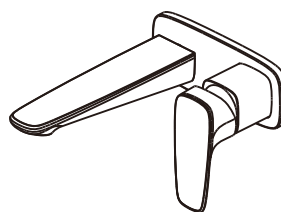
To ensure that your installation proceeds smoothly,
please read this instructions carefully before you begin.

American Standard

Signature

FFAS1704-101500ZN0
Wall Basin Mixer Set

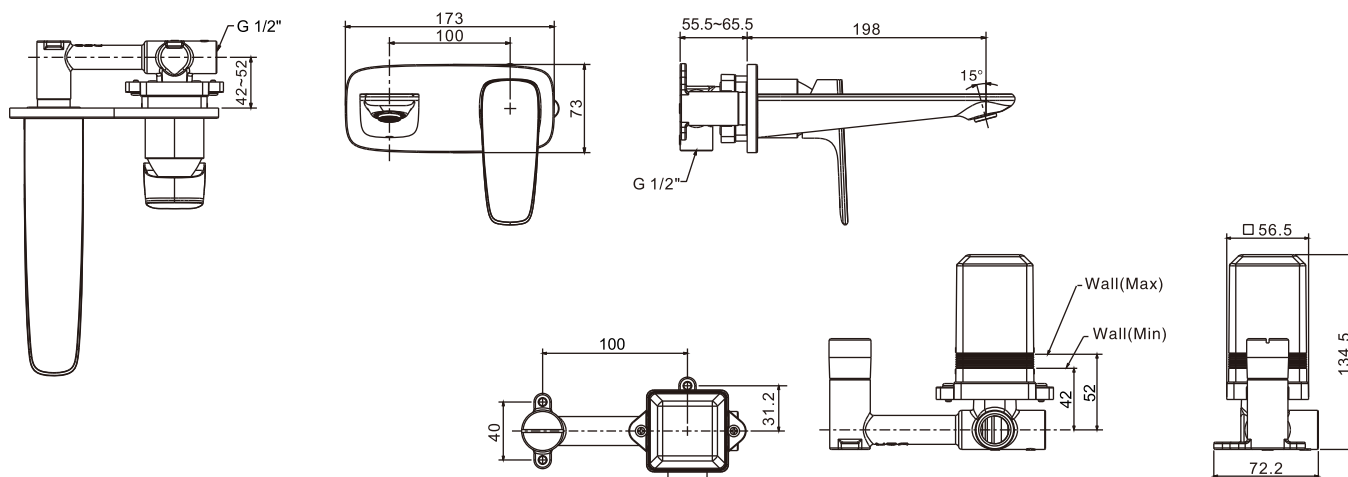
FFAS1704-601500ZN0
Wall Bath Mixer Set



Installation &
Operation Instruction

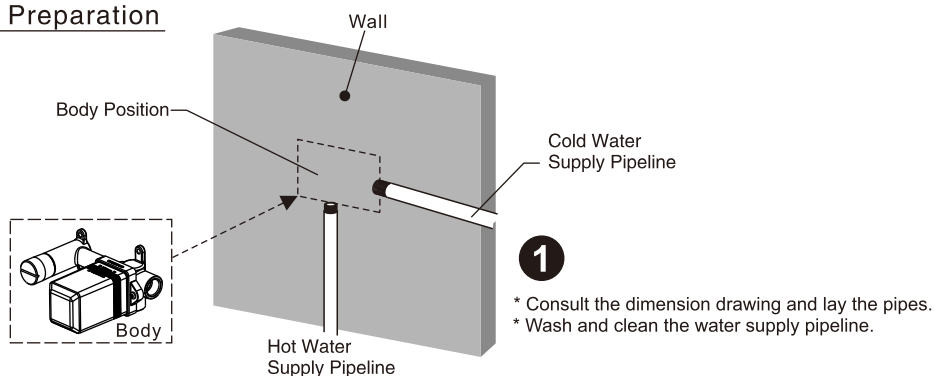
Dimension

Unit: mm

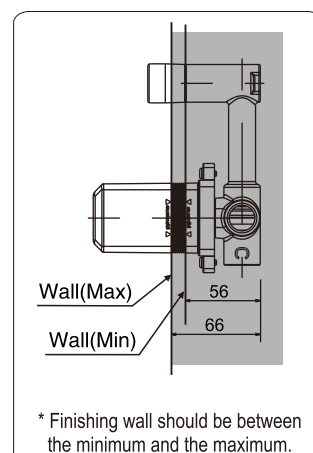
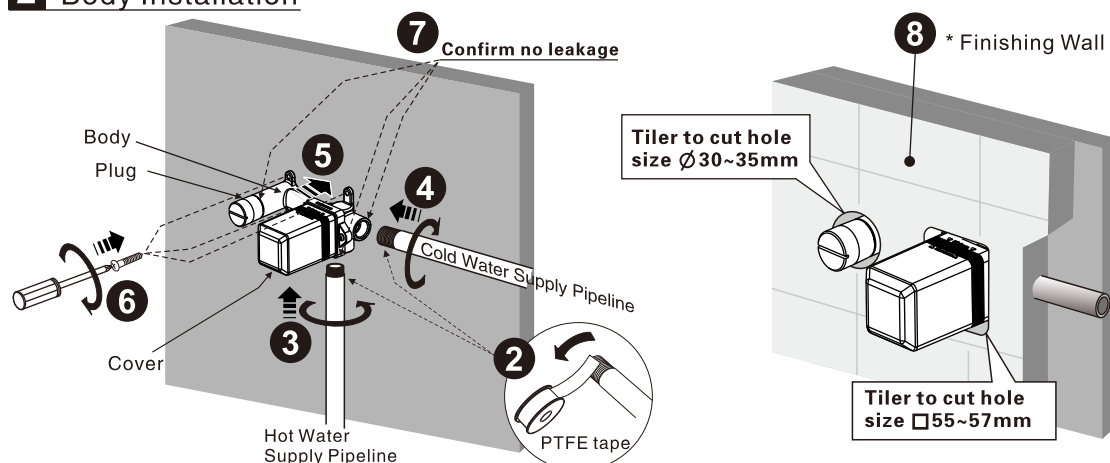


Installation

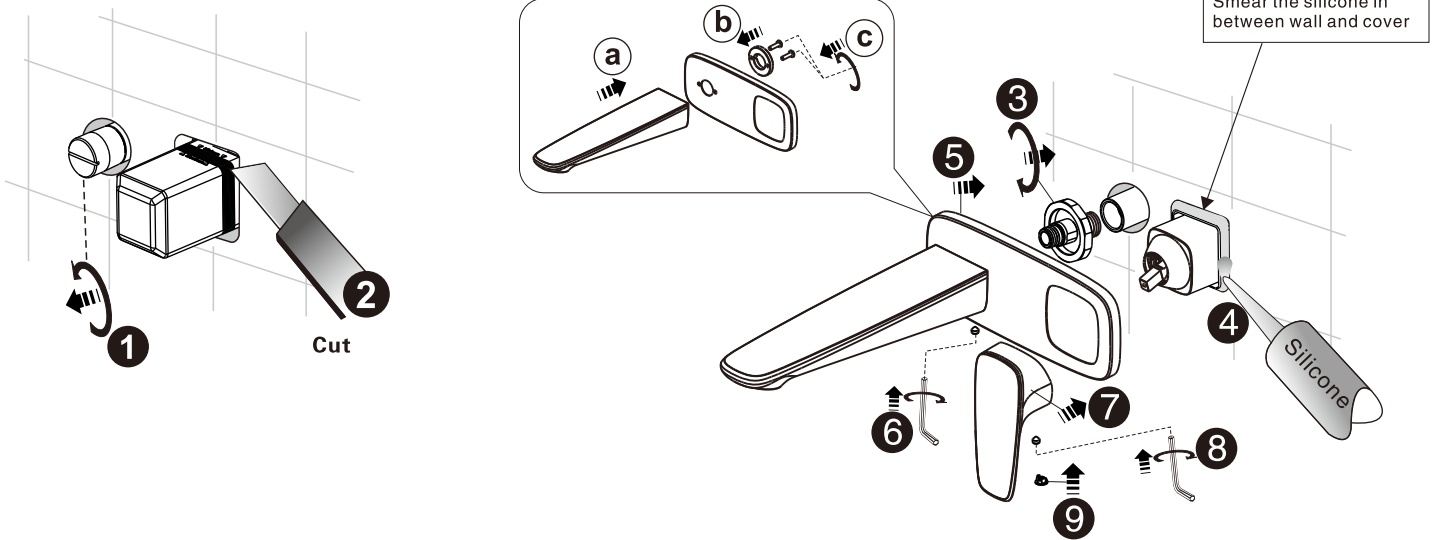
1 Preparation



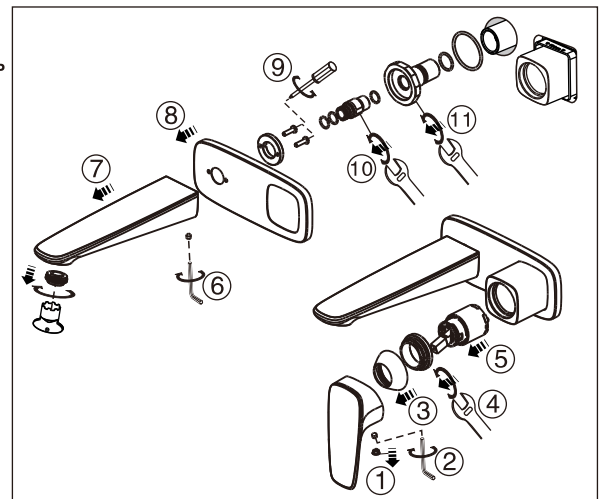
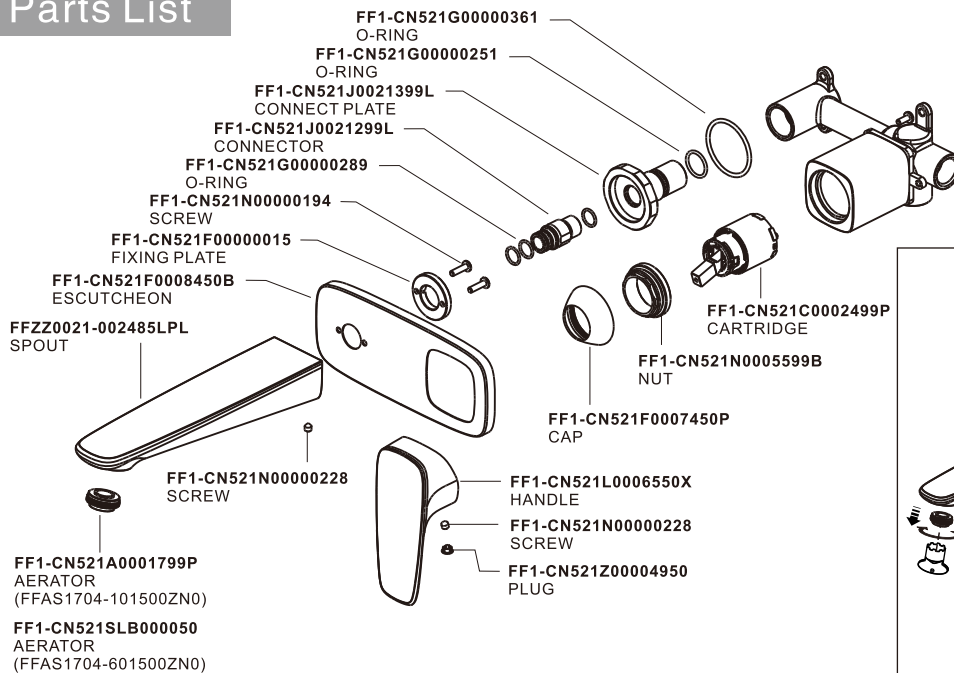
2 Body Installation



3 Spout & Handle Installation



Parts List



Notice

- * Remove all impurity in pipes before beginning to avoid clogging. Connect faucet pipes correctly.
- * Check installation distances in the Dimension diagram to ensure correct installation.

Conditions for use

* Water pressure condition: 0.05~0.75MPa (Recommended water pressure condition: 0.1~0.5MPa)

* Ambient temperature: 1~55°C

* Water temperature: 4°C ~ 90°C (Recommended hot water temperature 50~60°C)

* Steam should not be used with product.

* Note: Ensure water source is clean. Poor water quality can cause cartridge and internal components to clog, resulting in poor volume control and/ or product failure.

AUS

Reece Australia Pty Ltd
118 Burwood Hwy
Burwood VIC 3125

Tel.: 1800 080 055

Email: customercare@reece.com.au



NZ

Robertson
25 Vestey Drive
Mt Wellington, Auckland

Tel.: +64 9 5730490

Email: sales@robertson.co.nz