

Care & Maintenance

**! Please don't put heavy things on top to ensure the enduring safety of the hanger.
(the enduring limit should be within 5 kgs)**

Warm Tips

Please pay attention to below when you clean the metal coating.

1. Do not use any acid cleanser.
2. Do not use any abrasive cleanser.
3. Do not use any abrasive tool such as emery cloth or metal wire.

Maintenance Instruction on Metal Coating

1. Rinse the surface faucet with clean water first, then dry it with soft cotton cloth.
2. If there is some surface dirt and film which is difficult to clean, please use litmusless or alkalescent cleanser to clean them (recommended PH value is 7-9). Then rinse it with clean water and dry it with soft cotton cloth.

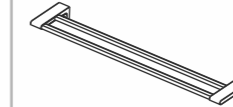
* The user need to take the responsibility for any damage caused by improper maintenance and clean.

Acacia E

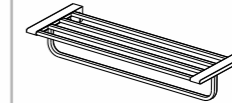
XXX=AL0 / A00 / DA0 /
GL0 / 440 / 500



FFAS1393-908XXXBF0
FFAS1393-908XXXBT0
Acacia E Towel Rack

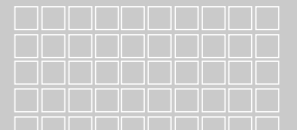


FFAS1394-908XXXBF0
FFAS1394-908XXXBT0
Acacia E Dual Towel Rack



FFAS1395-908XXXBF0
FFAS1395-908XXXBT0
Acacia E Towel Shelf

American Standard



Installation &
Operation Instructions

Thank you for selecting American Standard the benchmark of fine quality for over 100 years.
To ensure that your installation proceeds smoothly, please read these instructions carefully before you begin.

* American Standard continually improves our product design and performance and reserves the right to modify the dimension and specification of our product accordingly without any prior notification.

* Actual dimensions and specifications may vary, refer to physical product for exact dimensions and specification.

Pre-Installation Checks

All instruction procedures must comply in strict accordance with applicable local plumbing and building codes

*** Before assembling, please make sure the drilled position in the assembling part is safe.**

*** Check installation distances in the Dimension diagram to ensure correct installation.**

Mark: Please hold the body during assembling to avoid damage on the product.

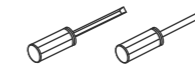
Recommended Tools and Materials



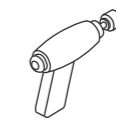
Tape Measure



Hammer



Screwdriver



Drill



Pencil

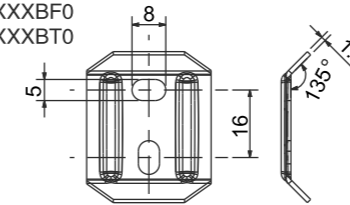


Level

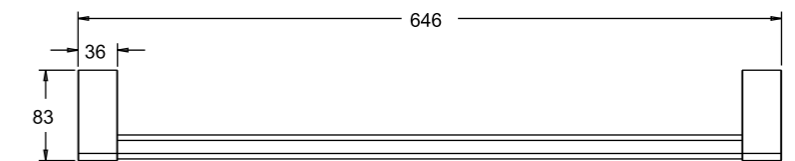
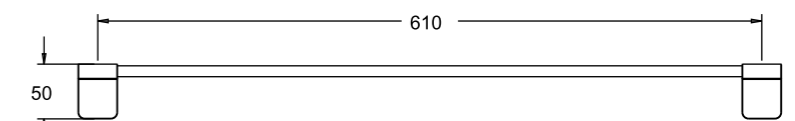
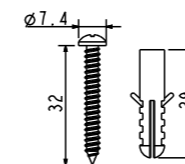
Dimension

Unit: mm

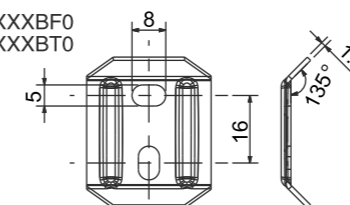
FFAS1393-908XXXBF0
FFAS1393-908XXXBT0



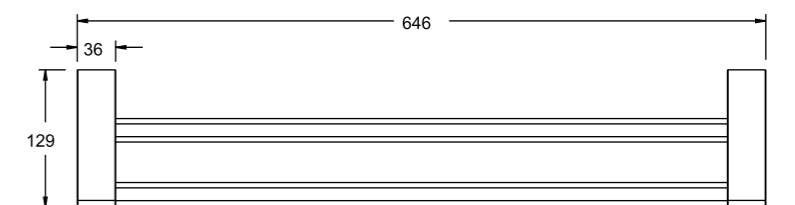
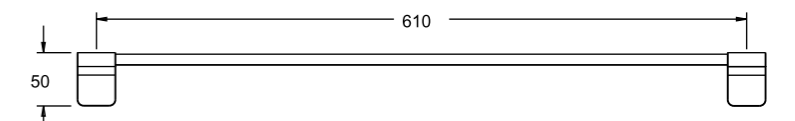
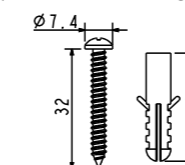
(The base mounting holes)



FFAS1394-908XXXBF0
FFAS1394-908XXXBT0



(The base mounting holes)

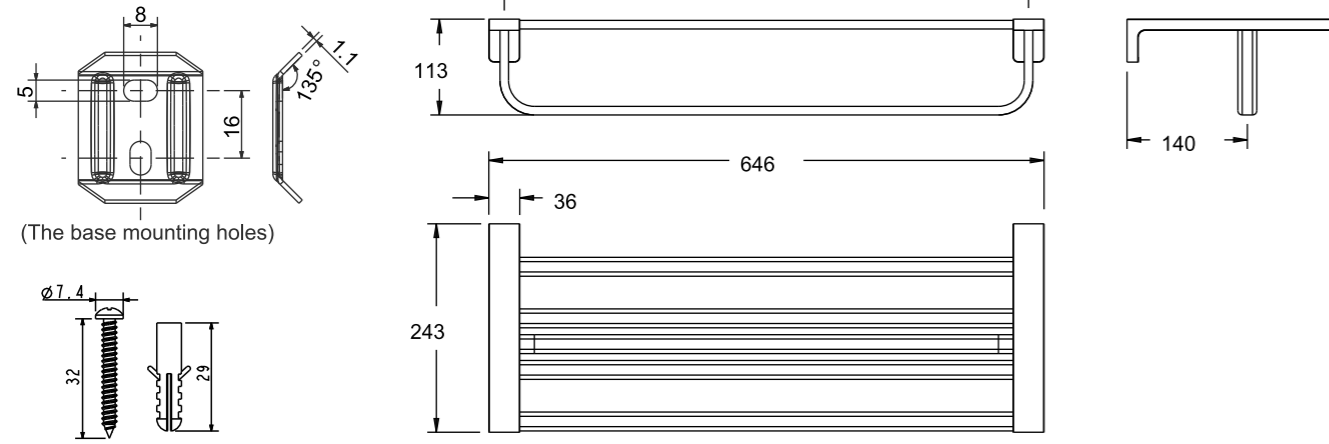


Attention:
Please leave manual with customer post installation.

Dimension

Unit: mm

FFAS1395-908XXXBF0
FFAS1395-908XXXBT0



Parts List

FFAS1393-908XXXBF0
FFAS1393-908XXXBT0

No.	Parts Name	Q'ty
1	Body(left)	1
2	Connector	2
3	Bar	1
4	Body(right)	1
5	Screw (M5*10)	2
6	Screw	2
7	Mounting Bracket	2
8	Screw	4
9	Anchor	4
10	In-hex Wrench (2.5mm)	1
11	Screw	2

FFAS1394-908XXXBF0
FFAS1394-908XXXBT0

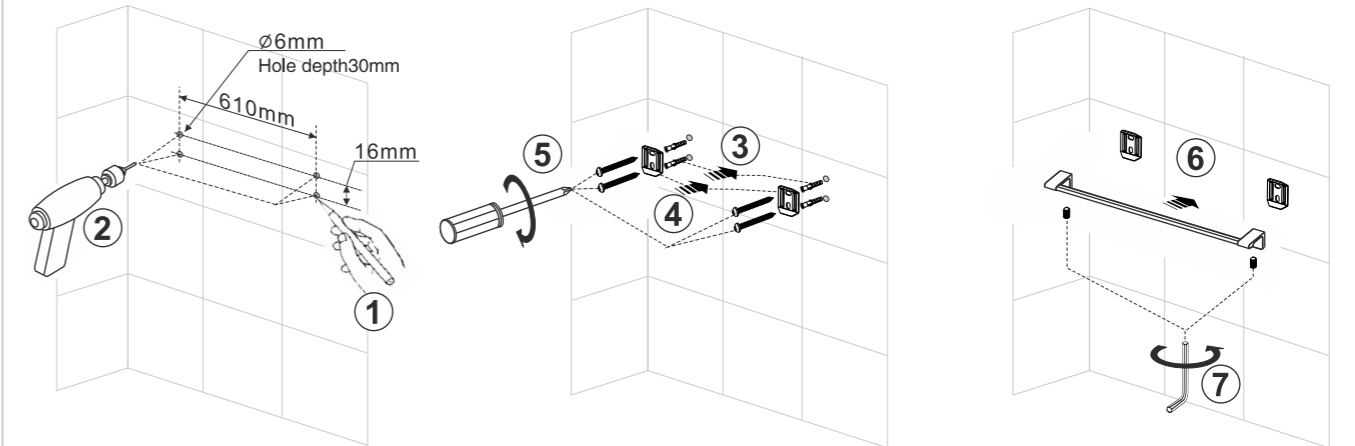
No.	Parts Name	Q'ty
1	Body(left)	1
2	Cap	2
3	Connector	4
4	Screw	4
5	Bar	2
6	Screw	4
7	Body(right)	1
8	Mounting Bracket	2
9	Screw (M5*10)	2
10	Anchor	4
11	Screw	4
12	In-hex Wrench(2.5mm)	1

FFAS1395-908XXXBF0
FFAS1395-908XXXBT0

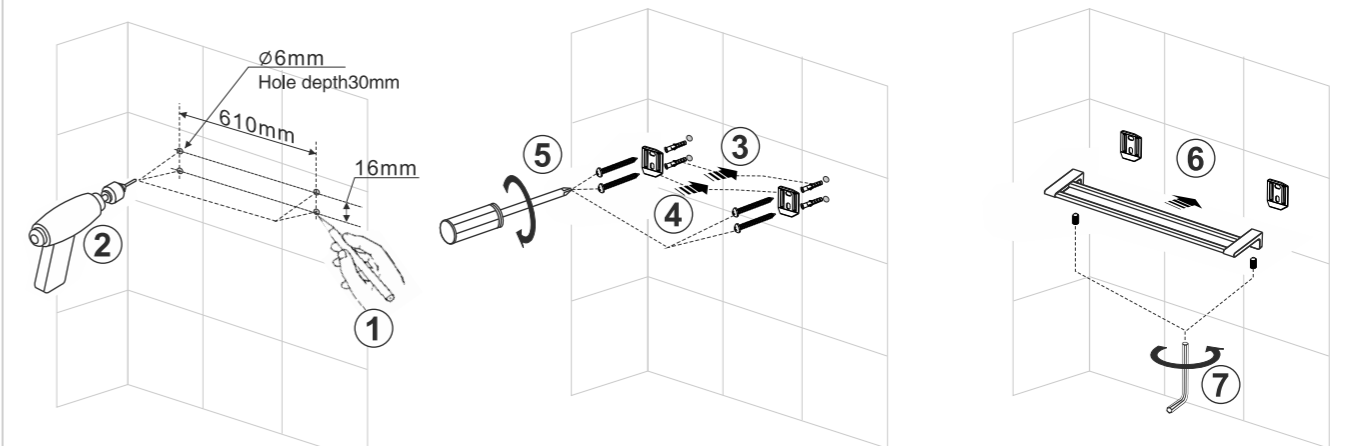
No.	Parts Name	Q'ty
1	Body(left)	1
2	Cap	2
3	Connector	8
4	Screw	8
5	Bar	2
6	Screw	6
7	Body(right)	1
8	Connector	2
9	Screw	4
10	Bar	1
11	Mounting Bracket	2
12	Anchor	4
13	Screw	4
14	Screw (M5*10)	2
15	In-hex Wrench(2.5mm)	1
16	Bar(without hole)	2

Installation

FFAS1393-908XXXBF0
FFAS1393-908XXXBT0



FFAS1394-908XXXBF0
FFAS1394-908XXXBT0



FFAS1395-908XXXBF0
FFAS1395-908XXXBT0

