

Genie Hand Shower

FFASS505-000XXXBA0

FFASS505-000XXXBV0

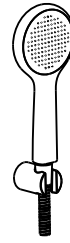
Genie Hand Shower W/Hose & Holder

FFASS506-000XXXBA0

FFASS506-000XXXBV0

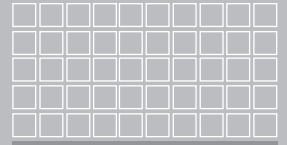


FFASS505-000XXXBA0
FFASS505-000XXXBV0



FFASS506-000XXXBA0
FFASS506-000XXXBV0

American Standard



Installation & Operation Instructions

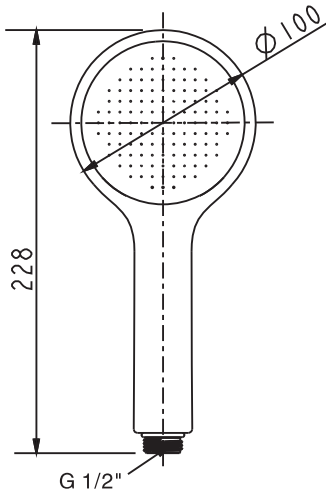
Thank you for selecting American Standard the benchmark of fine quality for over 100 years. To ensure that your installation proceeds smoothly, please read these instructions carefully before you begin.

* American Standard continually improves our product design and performance and reserves the right to modify the dimension and specification of our products accordingly without any prior notification.

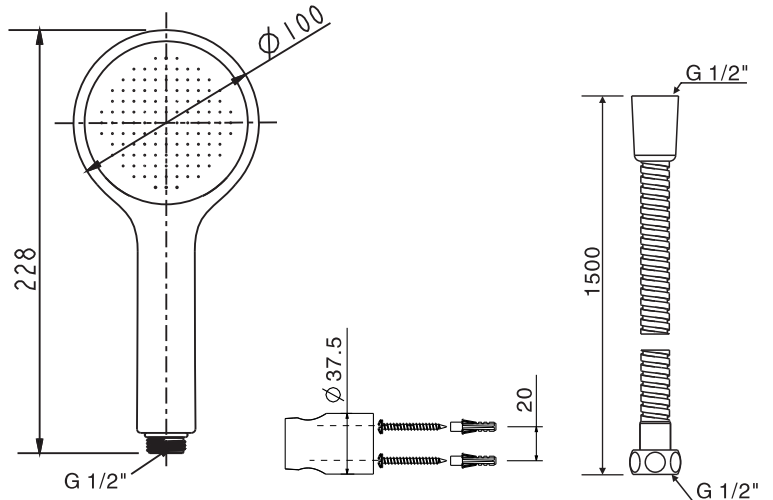
Dimension

Unit: mm

FFASS505-000XXXBA0 / BV0

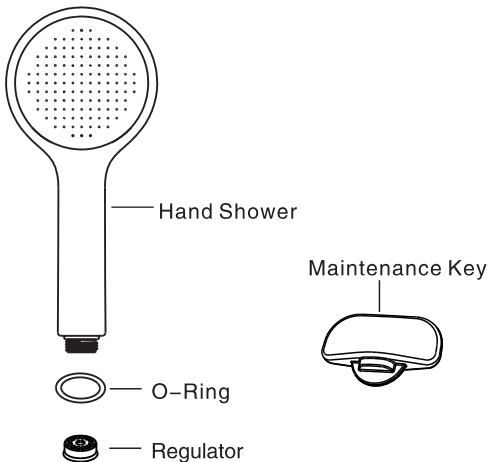


FFASS506-000XXXBA0 / BV0

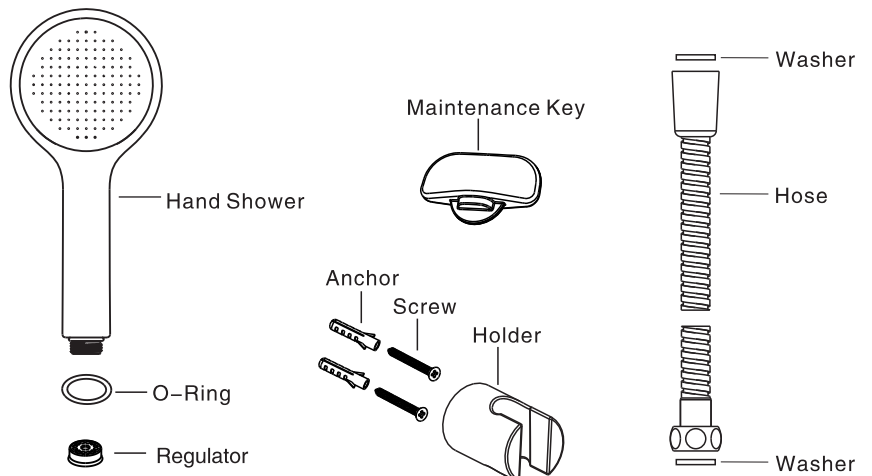


Parts List

FFASS505-000XXXBA0 / BV0

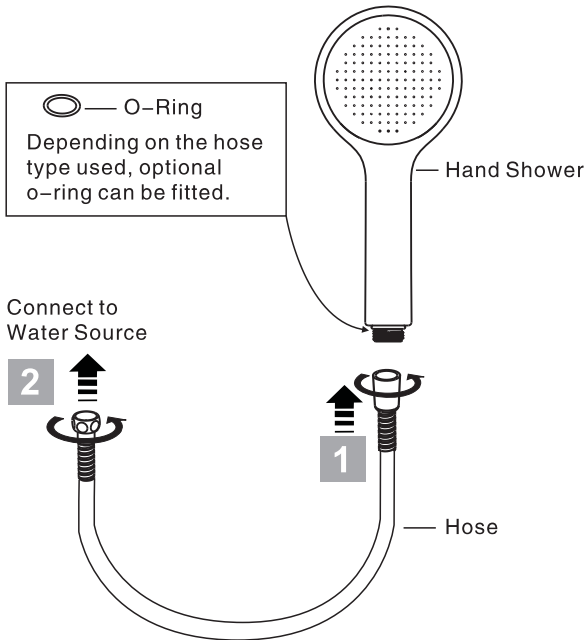
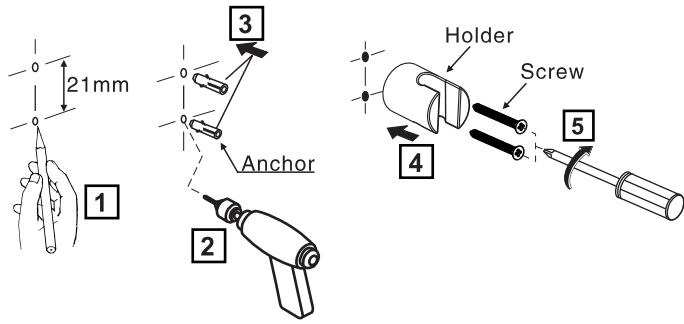


FFASS506-000XXXBA0 / BV0



Installation

FFASS506-000XXXBA0 / BV0



Care & Maintenance

Preparation

- * Wash and clean the water supply pipeline.
- * Check installation instructions to ensure correct installation.

Conditions for use

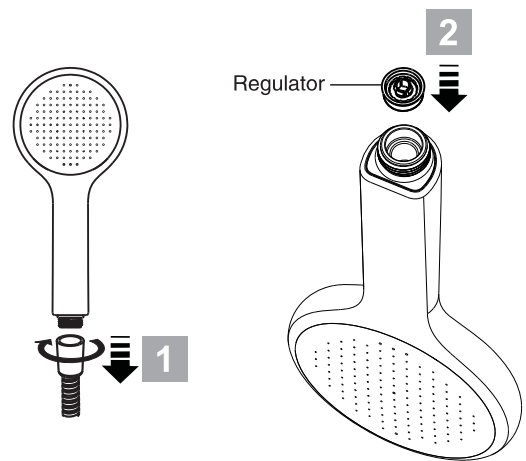
- * Water pressure condition: 0.05~0.5MPa
- * Recommended maximum water temperature: 60°C
- * Not for use as a steam outlet.

Cleaning the surface

- * Do not use abrasive cleaners or solvents on the product.
- * To avoid scratching the surface, do not use abrasive materials such as scouring pad.
- * Wrap a thick cloth around the product to prevent scratching or other damages during installation.

Reminder

- * Should water pressure exceed 0.1 MPa, please insert regulator for optimal water saving performance.



Customer Care Support

Australia
 customercare@reece.com.au
 1800 080 055

China
 800-820-3191 (Phone)
 400-820-3191 (Mobile)

Hong Kong
 info@grohe.hk
 +852-2969-7067

India
 1800-102-8372

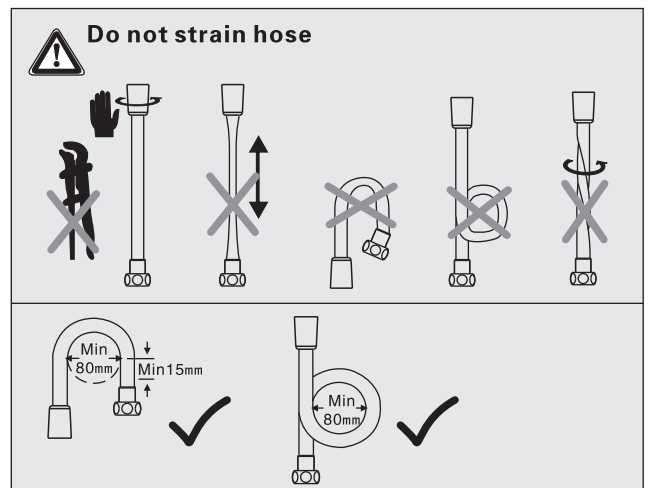
Indonesia
 CustomerCare-Indonesia@Lixil.com
 0-800-1-267823 (Toll Free)

New Zealand
 sales@robertson.co.nz
 +64-9-5730490

Philippines
 customerserviceph@lixil.com
 +63-2-893-3113 local 506

Thailand
 +66-2-102-2222

Vietnam
 customercareasvn@amstd.com
 1900-545460



Attention:
 Please leave manual with customer
 post installation.