

**Genie Hand Shower**

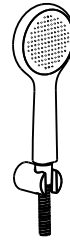
FFASS505-000XXXBT0  
FFASS505-000XXXBF0

**Genie Hand Shower W/Hose & Holder**

FFASS506-000XXXBT0  
FFASS506-000XXXBF0

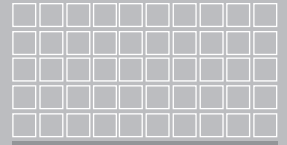


FFASS505-000XXXBT0  
FFASS505-000XXXBF0



FFASS506-000XXXBT0  
FFASS506-000XXXBF0

*American Standard*



**Installation & Operation Instructions**

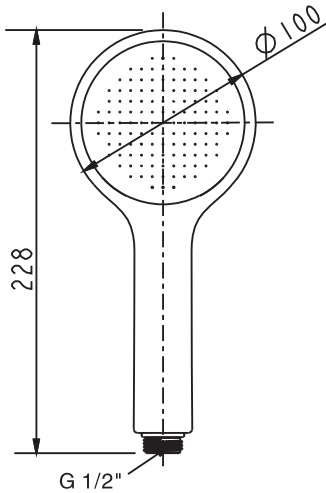
**Thank you for selecting American Standard the benchmark of fine quality for over 100 years. To ensure that your installation proceeds smoothly, please read these instructions carefully before you begin.**

\* American Standard continually improves our product design and performance and reserves the right to modify the dimension and specification of our products accordingly without any prior notification.

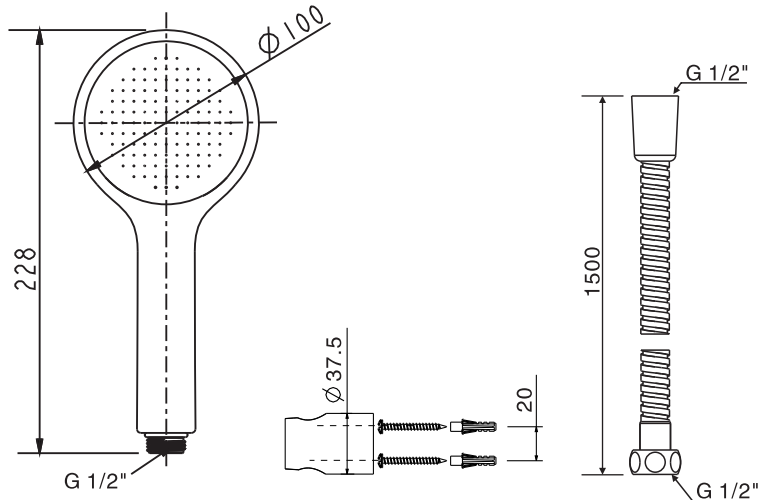
**Dimension**

Unit: mm

FFASS505-000XXXBT0 / BF0

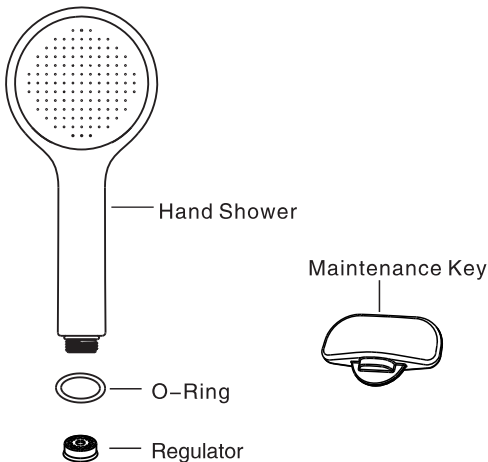


FFASS506-000XXXBT0 / BF0

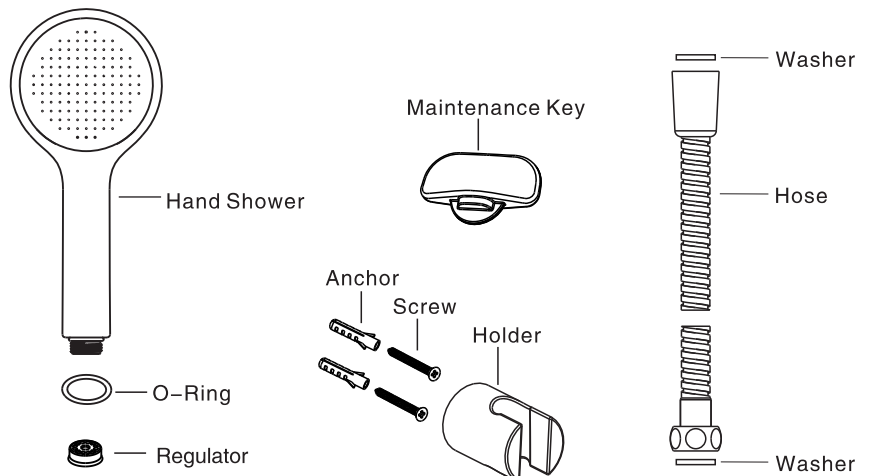


**Parts List**

FFASS505-000XXXBT0 / BF0

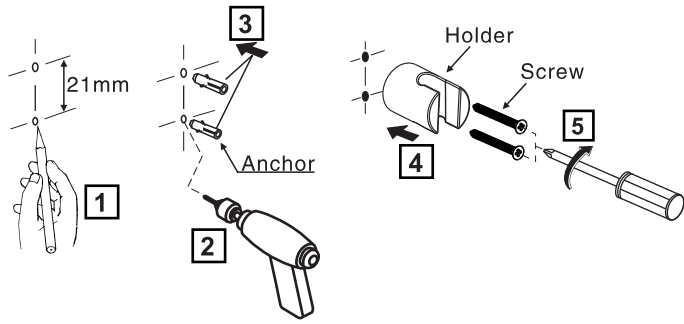


FFASS506-000XXXBT0 / BF0

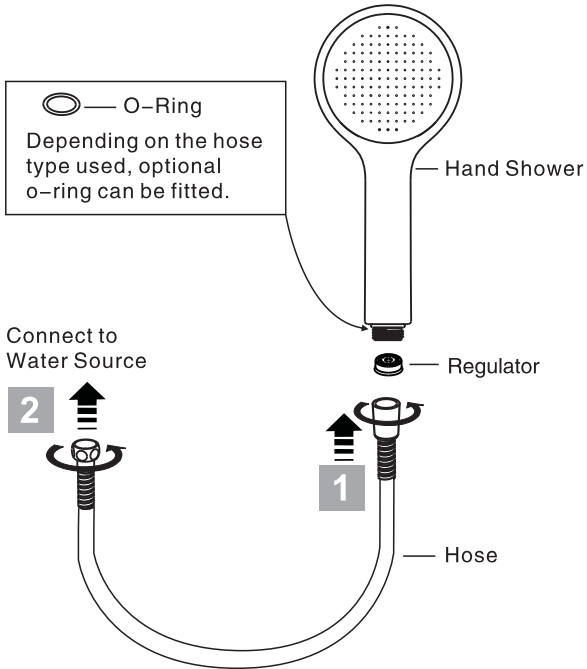


# Installation

FFASS506-000XXXBT0 / BF0



O-Ring  
Depending on the hose type used, optional o-ring can be fitted.



# Care & Maintenance

## Preparation

- \* Wash and clean the water supply pipeline.
- \* Check installation instructions to ensure correct installation.

## Conditions for use

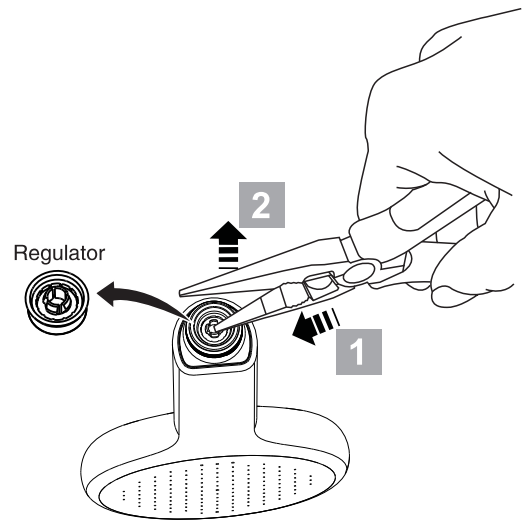
- \* Water pressure condition: 0.05~0.5MPa
- \* Recommended maximum water temperature: 60°C
- \* Not for use as a steam outlet.

## Cleaning the surface

- \* Do not use abrasive cleaners or solvents on the product.
- \* To avoid scratching the surface, do not use abrasive materials such as scouring pad.
- \* Wrap a thick cloth around the product to prevent scratching or other damages during installation.

## Extreme Low Pressure Configuration

- \* Should you experience extremely low water pressure (<0.1MPa) or prefer a stronger water pressure during your shower, you may gently remove the regulator as per instructions below.



# Customer Care Support

Australia  
customercare@reece.com.au  
1800 080 055

China  
800-820-3191 (Phone)  
400-820-3191 (Mobile)

Hong Kong  
info@grohe.hk  
+852-2969-7067

India  
1800-102-8372

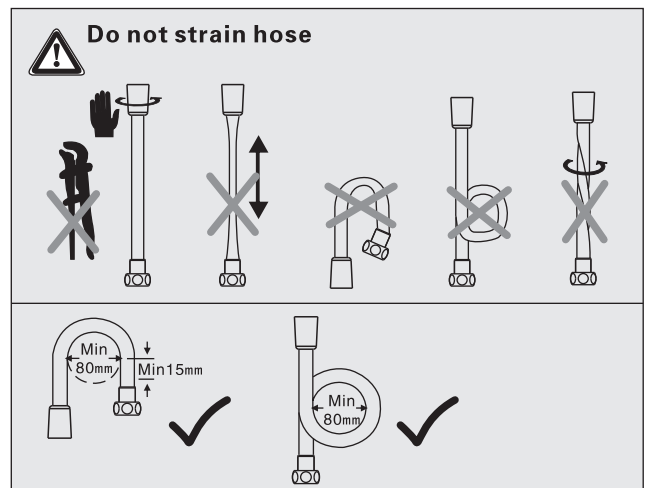
Indonesia  
CustomerCare-Indonesia@Lixil.com  
0-800-1-267823 (Toll Free)

New Zealand  
sales@robertson.co.nz  
+64-9-5730490

Philippines  
customerserviceph@lixil.com  
+63-2-893-3113 local 506

Thailand  
+66-2-102-2222

Vietnam  
customerareasvn@amstd.com  
1900-545460



**Attention:**  
Please leave manual with customer post installation.