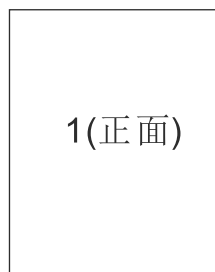
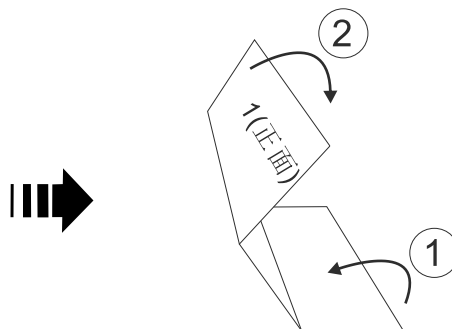


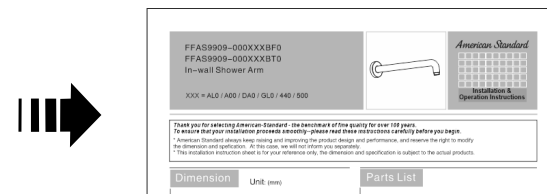
Tolerance, Unless Otherwise Stated. Is	
Above 0.5 to and including 6	±0.1
Excess 6 to and including 30	±0.2
Excess 30 to and including 120	±0.3
Excess 120 to and including 315	±0.5
Excess 315 to and including 1000	±0.8
Excess 1000 to and including 2000	±1.2



1. 说明书单面印刷完成  
(210x297=A4) 共1页



2. 说明书折叠



4. 说明书折叠完成

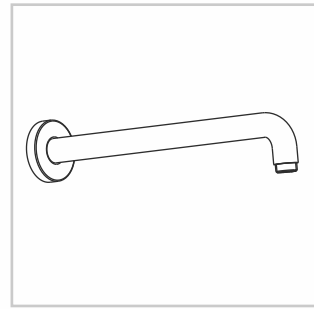
制作说明:

1. 说明书完成的尺寸: 210\*100
2. 材料: 80克的白色纸
3. 印刷说明: 说明书为210x297(A4) 双面印刷, 并折叠成210x100大小完成(详看图示)
4. 印刷颜色: 灰度
5. 印刷时, 内容准确, 清晰, 墨色均匀, 表面清洁。

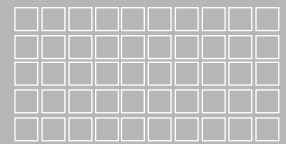
				DESIGN	黄卓桓	2022.12.30	TITLE	Instructions	
				CHECKED	刘丑群	2022.12.30	REF	英文说明书(PVD)_ FFAS9909-000XXXBF0 FFAS9909-000XXXBT0	
				APPROVED	李军	2022.12.30			
				SCALE	MATERIAL	WEIGHT	DWG NO.	FF1-CN521K00567099	
REV	DESCRIPTION	DATE	NAME					American Standard	

FFAS9909-000XXXBF0  
 FFAS9909-000XXXBT0  
 In-wall Shower Arm

XXX = AL0 / A00 / DA0 / GL0 / 440 / 500



American Standard



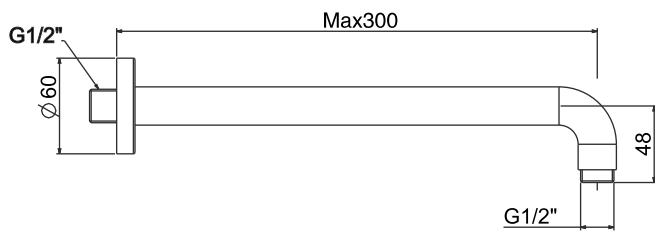
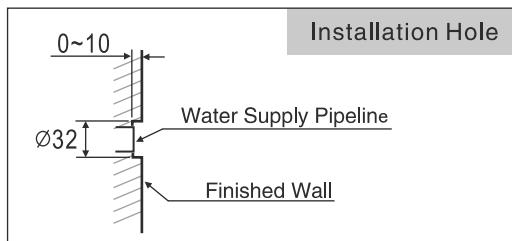
Installation &  
 Operation Instructions

**Thank you for selecting American-Standard - the benchmark of fine quality for over 100 years.**  
**To ensure that your installation proceeds smoothly--please read these instructions carefully before you begin.**

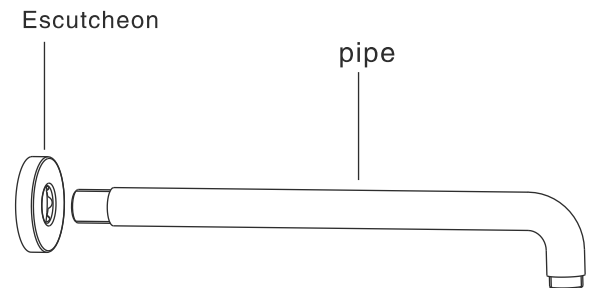
\* American Standard always keep raising and improving the product design and performance, and reserve the right to modify the dimension and specification. At this case, we will not inform you separately.  
 \* This installation instruction sheet is for your reference only, the dimension and specification is subject to the actual products.

## Dimension

Unit: (mm)

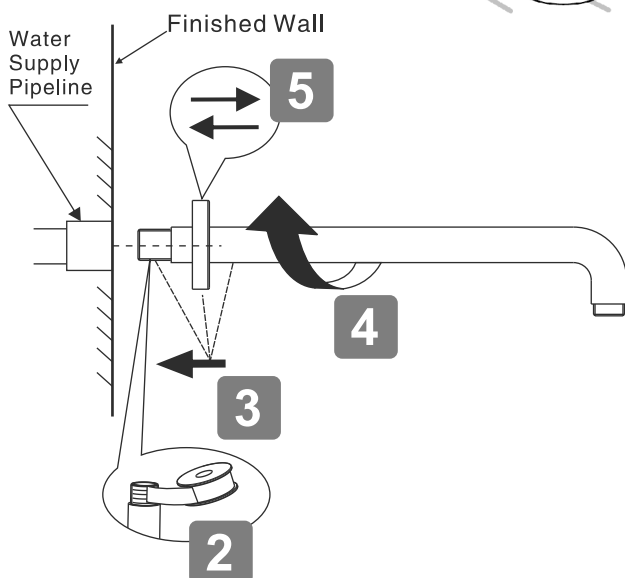


## Parts List



## Installation

- \* Consult the dimension drawing and lay the pipes.
- \* Wash and clean the water supply pipeline.



## Maintenance

1. Keep the product clean with clean water or mild liquid detergent regularly.
2. Rinsed off with clean water, and wiped dry with soft cotton. Acid or abrasive detergents are prohibited.

Please use together with American Standard shower heads, this product only connect with the shower head, other objects is forbidden. For your safety, should not be over loaded 15kg.

### Conditions for use

- \* Recommended water pressure condition: 0.1Mpa~0.5Mpa.
- \* Steam is not allowed to use
- \* Environment Temperature: 1 ~ 55°C.