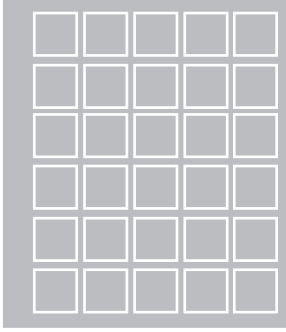
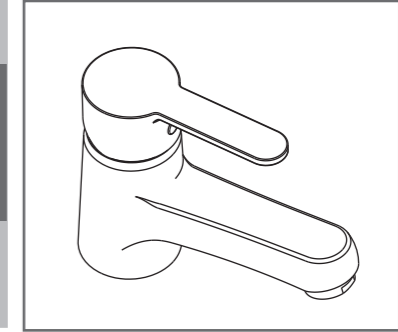


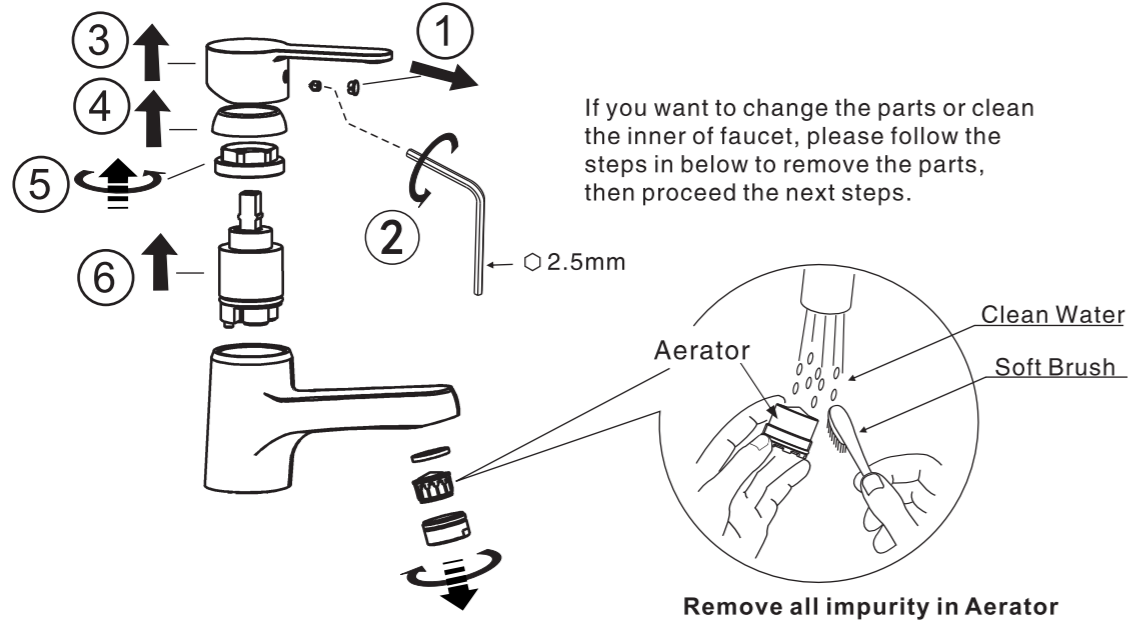
Thank you for selecting American-Standard - the benchmark of fine quality for over 100 years.
To ensure that your installation proceeds smoothly--please read these instructions carefully before you begin.

A-6501-10 (FFAS6506-1T1500BT0 (WF-6506.1T1.50))
SEVA SINGLE MONO FAUCET

Installation & Operation Instruction



7 Maintenance



8 Trouble Shooting

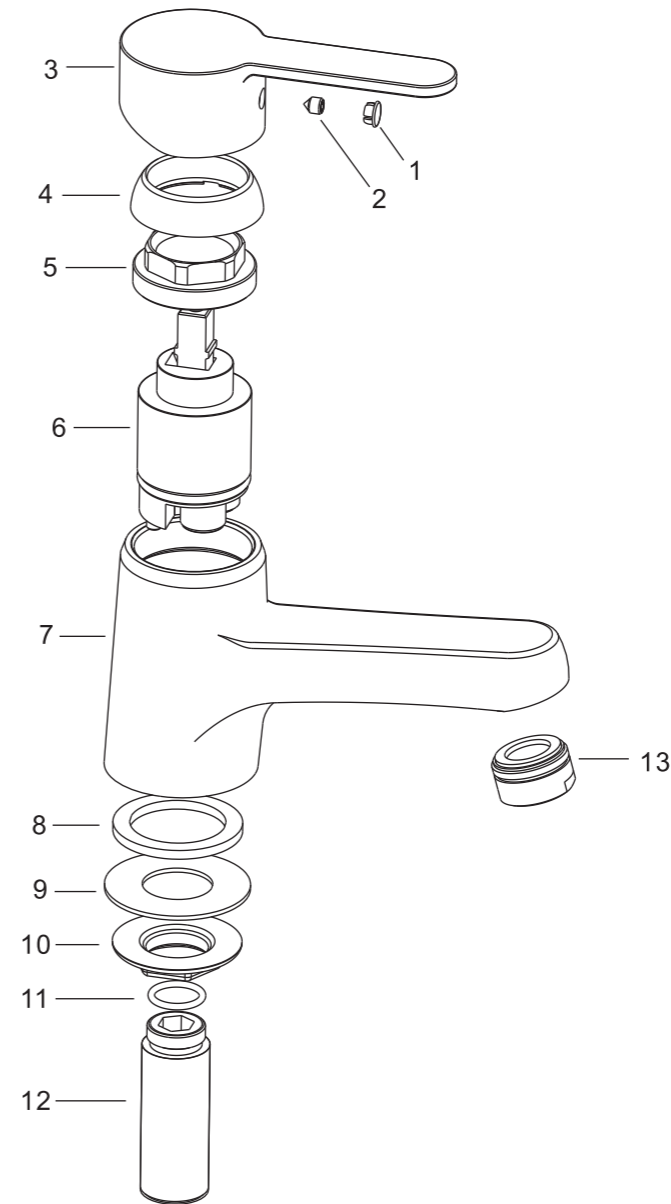
Trouble	Checkpoint	Contents	How to do
Poor flow rate	Aerator	Check if there is impurity or not	Remove the impurity
	Angle valve	Check if the water from angle valve is enough or not	Increase water supply
Leakage	Cartridge nut	Check if the cartridge screws get loosed	Tighten the screw
	Connection in faucet tube	Check if there is the washer missed	Add the washer
		Check if the washer is broken or not	Replace the washer

9 Term of Guarantee

* One year for "O" rings or washers. Five years for Chrome plate Body of tap or faulty workmanship
Lifetime drip free warranty on Cartridge.
* Except:
-Trouble caused by disasters or user's carelessness.
-If leakage is caused by connection problem with 3rd party products or non approved parts.



Attention:
Please leave the manual with the customer after installation is finished.



PARTS LIST		
No.	Part Name	Q'ty
1	Index Button	1
2	Screw	1
3	Handle	1
4	Cap	1
5	Nut	1
6	Cartridge	1
7	Body	1
8	Washer	1
9	Washer	1
10	Nut	1
11	O-Ring	1
12	Shank	1
13	Aerator	1

1 Note

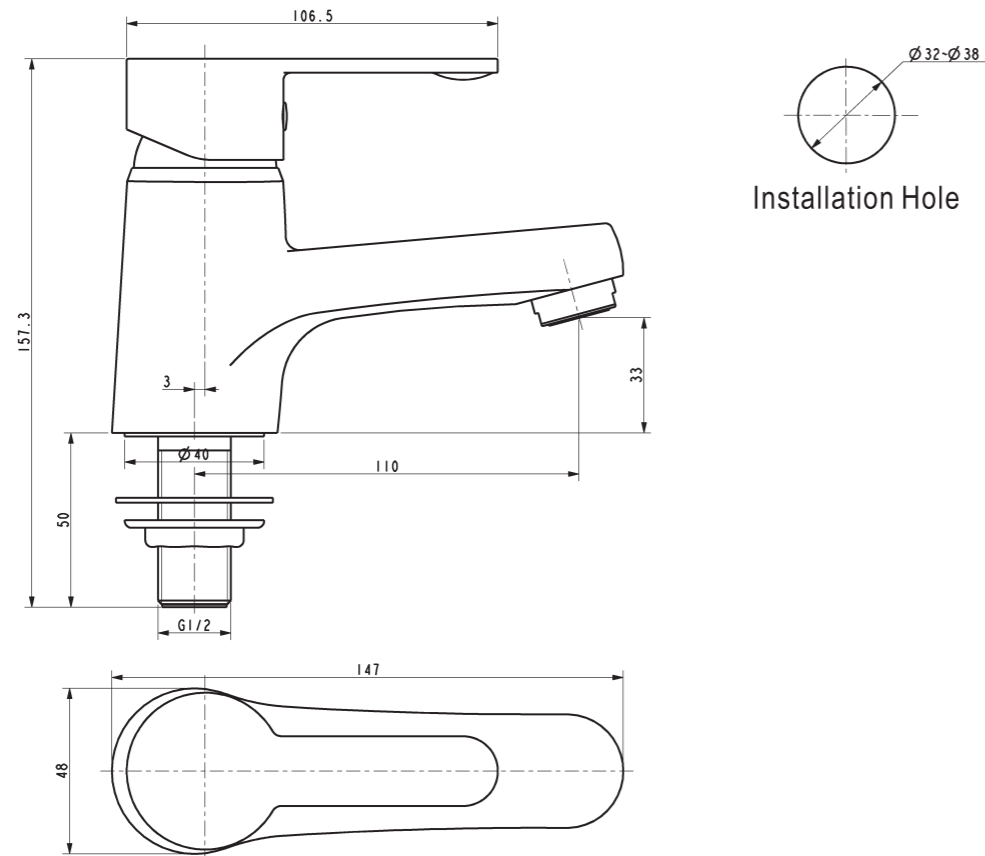
- * Remove all impurities in pipes before beginning.
- * Check installation distances in the Dimension diagram to ensure correct installation.

Conditions for use

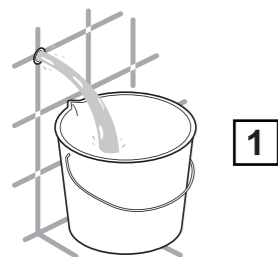
- * Recommended water pressure condition: 0.1~0.5Mpa.
- * Environment Temperature: 1~55°C.
- * Not for use as a steam outlet.

When in the process of installation, grab the whole body. Do not grab handle only.

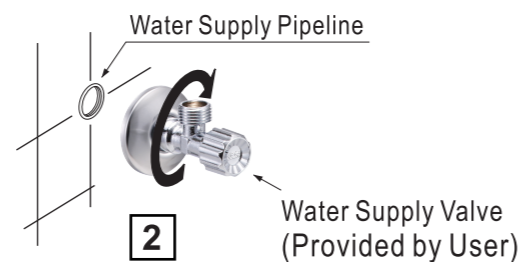
2 DIMENSION



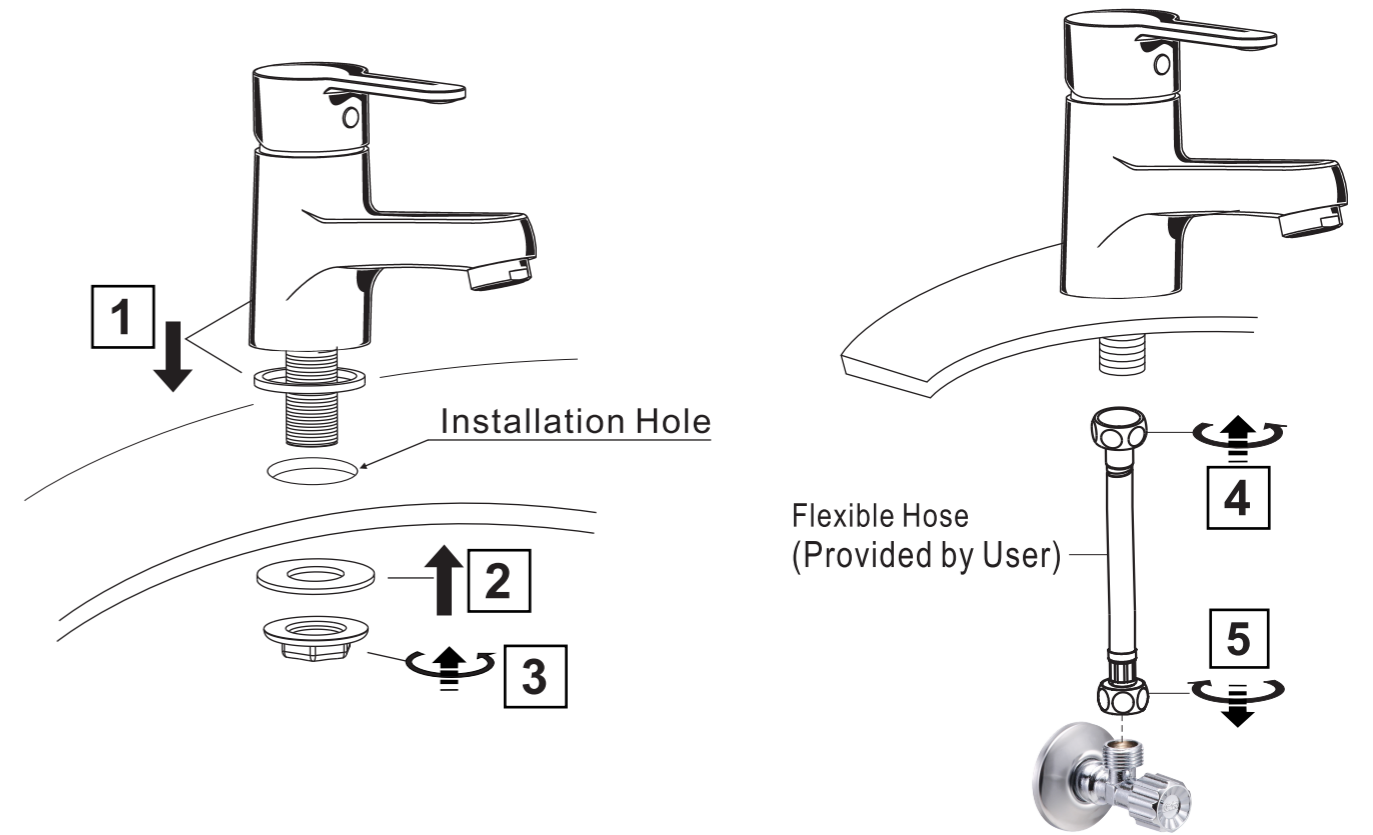
3 Preparation



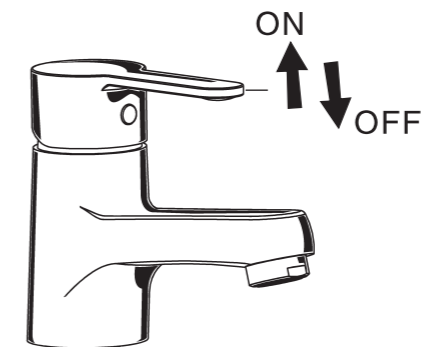
- Consult the dimension drawing and lay the pipes.
- Wash and clean the water supply pipeline.



4 Installation



5 Usage



6 Test

- * Move handle down into "off" position. Turn on supply angle valve to check all connections for leak.
- * Operate handle up and down, left and right to flush water lines thoroughly.