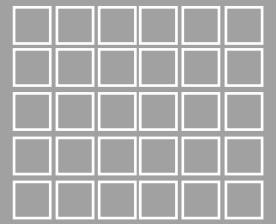
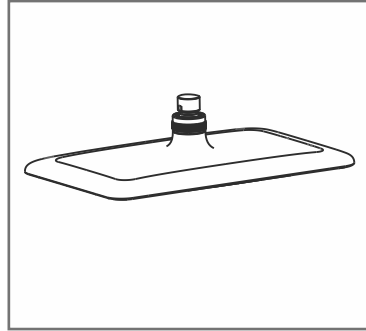


To ensure that your installation proceeds smoothly, please read this instructions carefully before you begin.

American Standard

FFASS515-000XXXBF0
FFASS515-000XXXBT0
EasySE Exposed 12" Head Shower

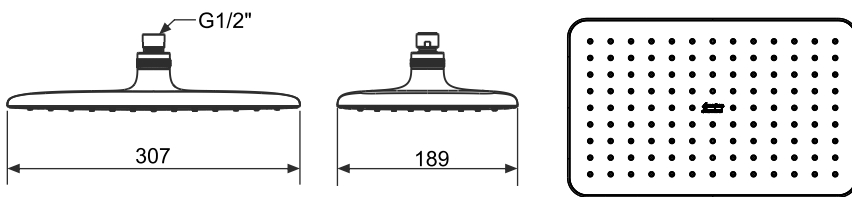
XXX = AL0 / A00 / DA0 / GL0 / 440 / 500



Installation & Operation Instruction

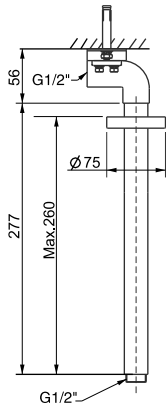
Dimension

Unit: mm

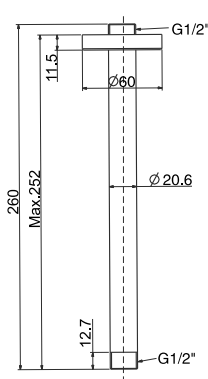


We recommend you should use together with below SKUs.

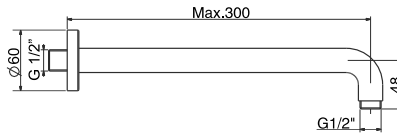
FFAS9907-000XXXBF0
FFAS9907-000XXXBT0
IDS Ceiling Shower Arm



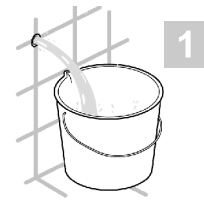
FFAS9908-000XXXBF0
FFAS9908-000XXXBT0
Ceiling Shower Arm



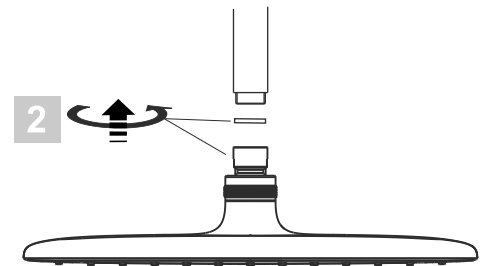
FFAS9909-000XXXBF0
FFAS9909-000XXXBT0
In-wall Shower Arm



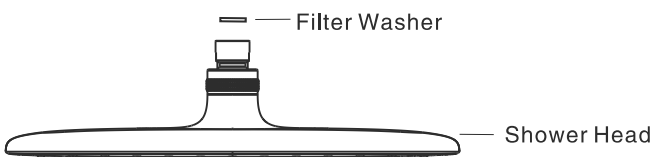
Installation



- * Consult the dimension drawing and lay the pipes.
- * Wash and clean the water supply pipeline.



Parts List



Notice

Remove all impurity in pipes before beginning to avoid clogging. Connect faucet pipes correctly.

When you repair the faucet you will need to shut off hot/cold water supply by closing the water supply.

Conditions for use

- * Water pressure condition: 0.1MPa~0.75MPa (Recommended: 0.1MPa~0.5MPa)
- * Water supply for this product should be Municipal drinking water.
- * Environment Temperature: 1°C~55°C
- * Not for use as a steam outlet.

Cleaning the surface of faucet

- * Rinse the product with clean water.
- * Dry with soft cotton flannel cloth.
- * Do not clean the product with acid, polish, abrasives, harsh cleaners, or cloth with a harsh surface as these products may damage the finish.