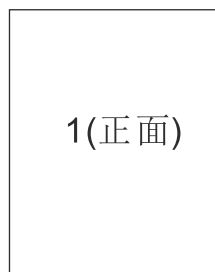
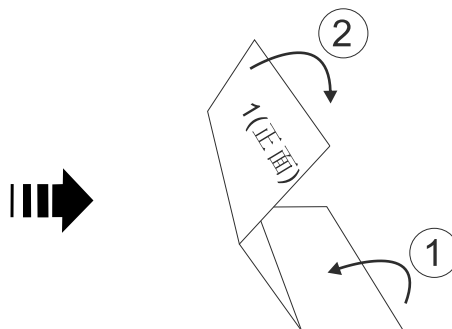


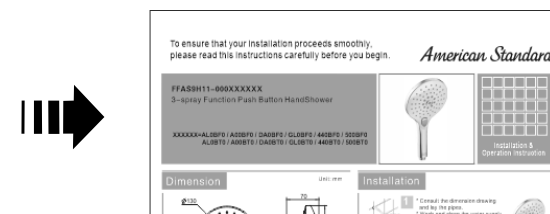
Tolerance, Unless Otherwise Stated. Is	
Above 0.5 to and including 6	±0.1
Excess 6 to and including 30	±0.2
Excess 30 to and including 120	±0.3
Excess 120 to and including 315	±0.5
Excess 315 to and including 1000	±0.8
Excess 1000 to and including 2000	±1.2



1. 说明书单面印刷完成
(210x297=A4) 共1页



2. 说明书折叠



4. 说明书折叠完成

制作说明:

1. 说明书完成的尺寸: 210*100
2. 材料: 80克的白色纸
3. 印刷说明: 说明书为210x297(A4) 单面印刷, 并折叠成210x100大小完成(详看图示)
4. 印刷颜色: 灰度
5. 印刷时, 内容准确, 清晰, 墨色均匀, 表面清洁。

				DESIGN	黄卓桓	2022.11.18	TITLE	Instructions	
				CHECKED	刘卫群	2022.11.18	REF	英文说明书(PVD) FFAS9H11-000XXXBF0 FFAS9H11-000XXXBT0	
				APPROVED	李军志	2022.11.18			
				SCALE	MATERIAL	WEIGHT	DWG NO.	FF1-CN521K00564699	
REV	DESCRIPTION	DATE	NAME					American Standard	

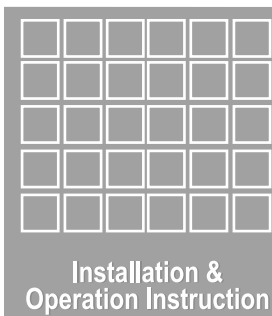
To ensure that your installation proceeds smoothly, please read this instructions carefully before you begin.

American Standard

FFAS9H11-000XXXBF0
FFAS9H11-000XXXBT0

3-spray Function Push Button HandShower

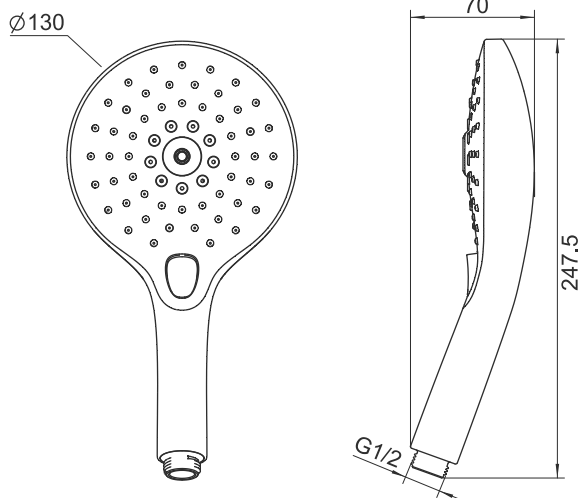
XXX = AL0 / A00 / DA0 / GL0 / 440 / 500



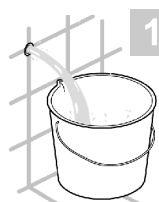
Installation & Operation Instruction

Dimension

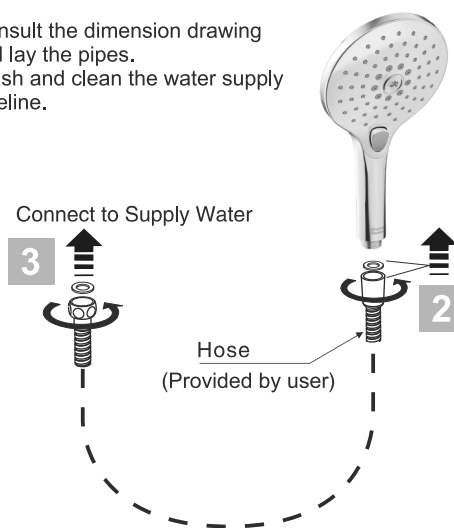
Unit: mm



Installation



- 1 * Consult the dimension drawing and lay the pipes.
 * Wash and clean the water supply pipeline.



Parts List



Handshower

Regulator

Notice

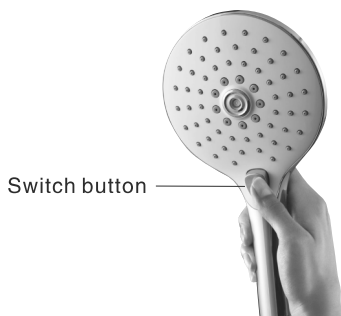
Conditions for use

- * Water pressure condition: 0.1MPa~0.75MPa (Recommended: 0.1MPa~0.5MPa)
- * Environment Temperature: 1°C~55°C
- * Not for use as a steam outlet.

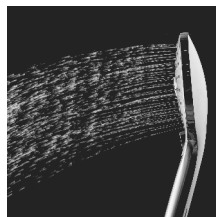
Cleaning the surface of faucet

- * Rinse the product with clean water.
- * Dry with soft cotton flannel cloth.
- * Do not clean the product with acid, polish, abrasives, harsh cleaners, or cloth with a harsh surface as these products may damage the finish.

Usage



3 spray modes



Tranquil Rain



Jet Rain



Therapy Rain.