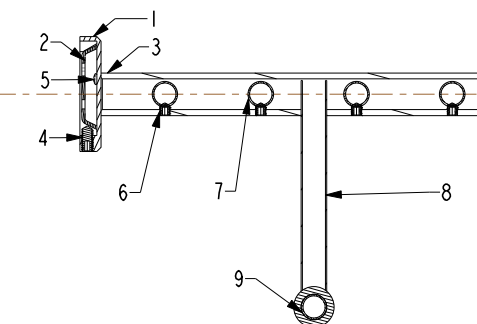
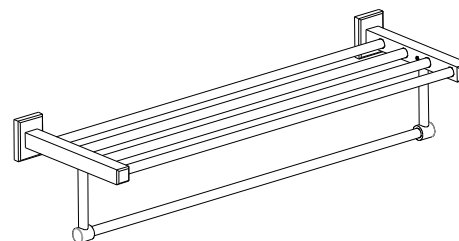
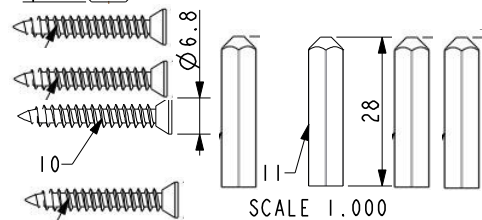
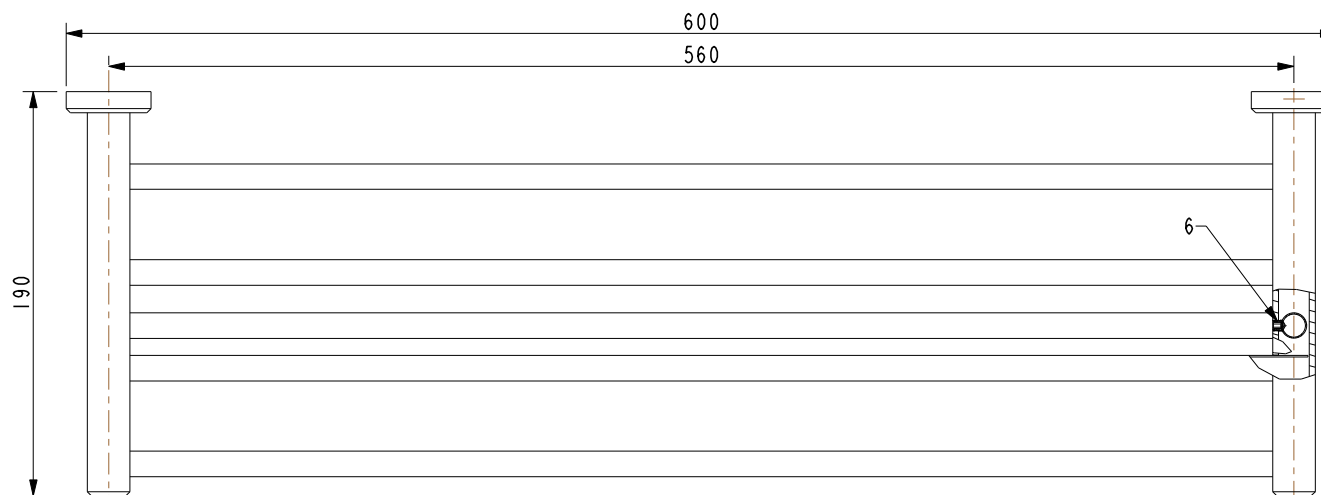
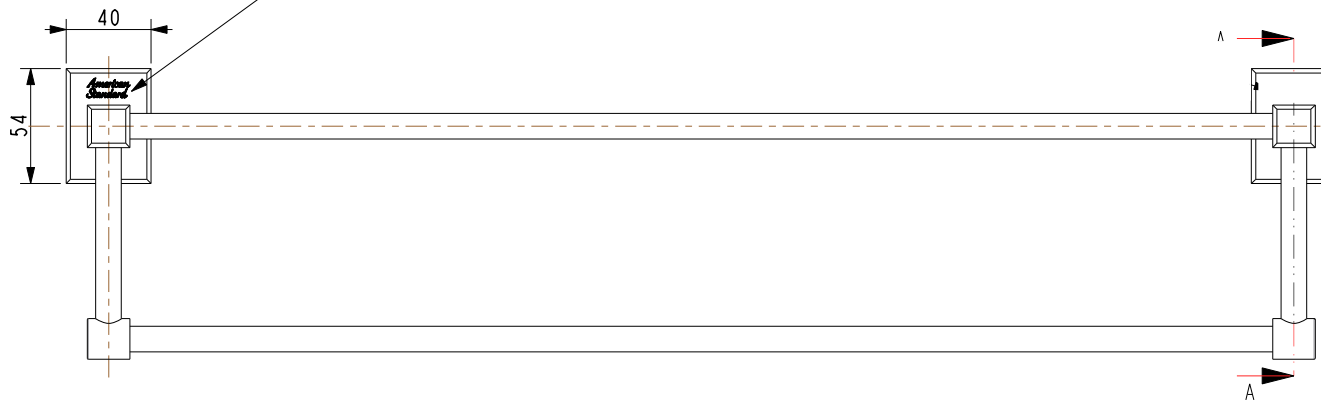
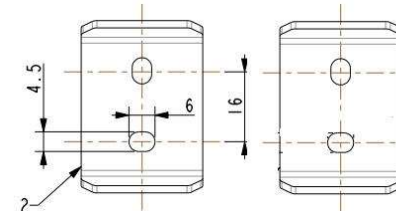
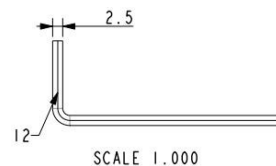


Tolerance, Unless Otherwise Stated, Is		
Above 0.5 to and including 6	±0.1	
Excess 6 to and including 30	±0.2	
Excess 30 to and including 120	±0.3	
Excess 120 to and including 315	±0.5	
Excess 315 to and including 1000	±0.8	
Excess 1000 to and including 2000	±1.2	

丝印LOGO  
颜色Pantone 11C



SECTION A-A

技术要求:

- 按《WI10.3204》浴室配件进货检验标准检验;
- 所有尺寸为一般尺寸。

序号	组件号	对象描述	材质	数量	备注
1	FF1-CN521J00317ALX	0481底座 流云灰	ZZnA14-1	2	
3	FF1-CN521B00053ALX	0495左支杆 流云灰	ZZnA14-1	1	
	FF1-CN521B00054ALX	0495右支杆 流云灰	ZZnA14-1	1	
7	FF1-CN521Z00237ALB	0493直管 流云灰	SUS201	5	
8	FF1-CN521Z00240ALB	0495挂杆座 流云灰	H62	2	
2					
4					
5					
6	FF1-CN521Z0024199S	0495余下配件	组件	1	
10					
11					
12					

DESIGNED	利华波	2023.12.19	TITLE	
CHECKED	李华	2023.12.19	REF	
APPROVED	李华	2023.12.19	概念方毛巾架_流云灰	
SCALE	MATERIAL	WEIGHT	DWG NO.	
0.400	Assembly		FFAS0495-908AL0BFO	American Standard

REV	DESCRIPTION	DATE	NAME