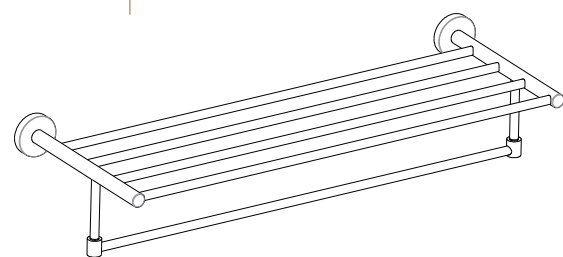
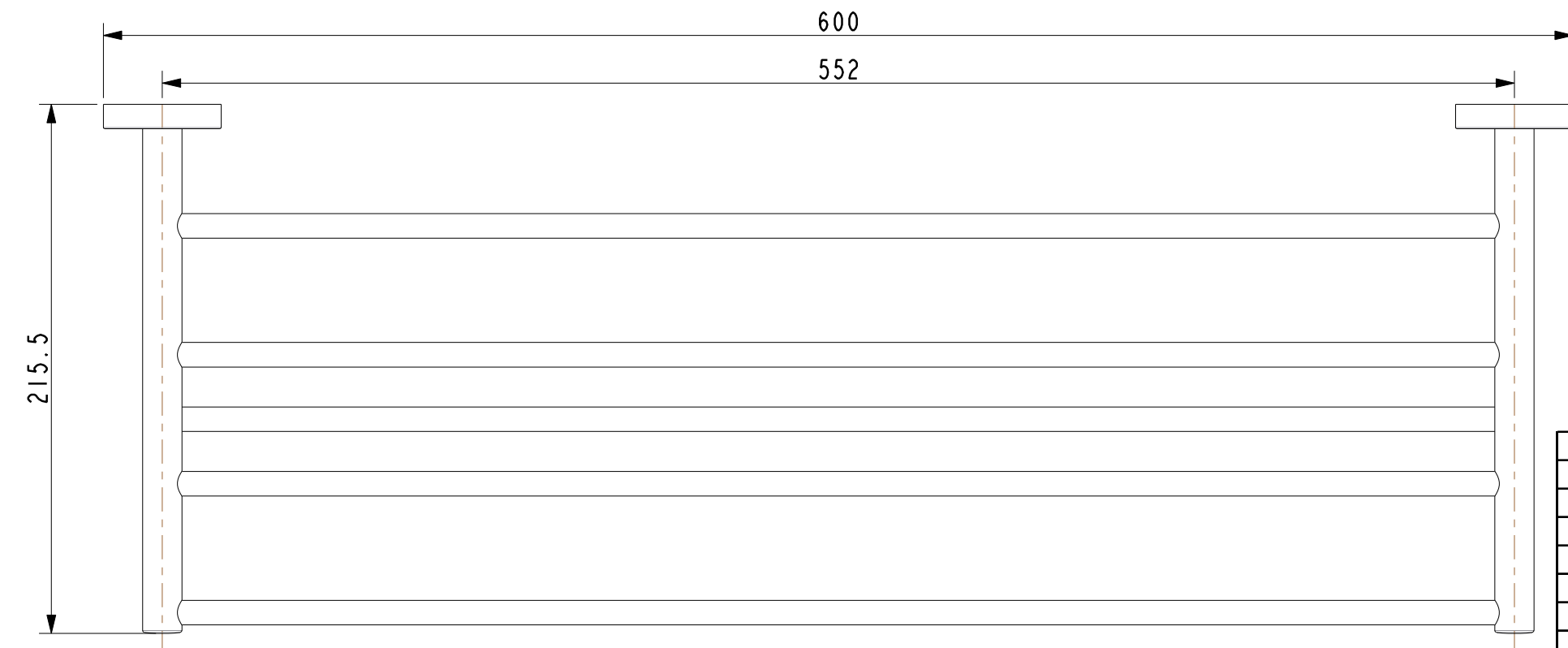
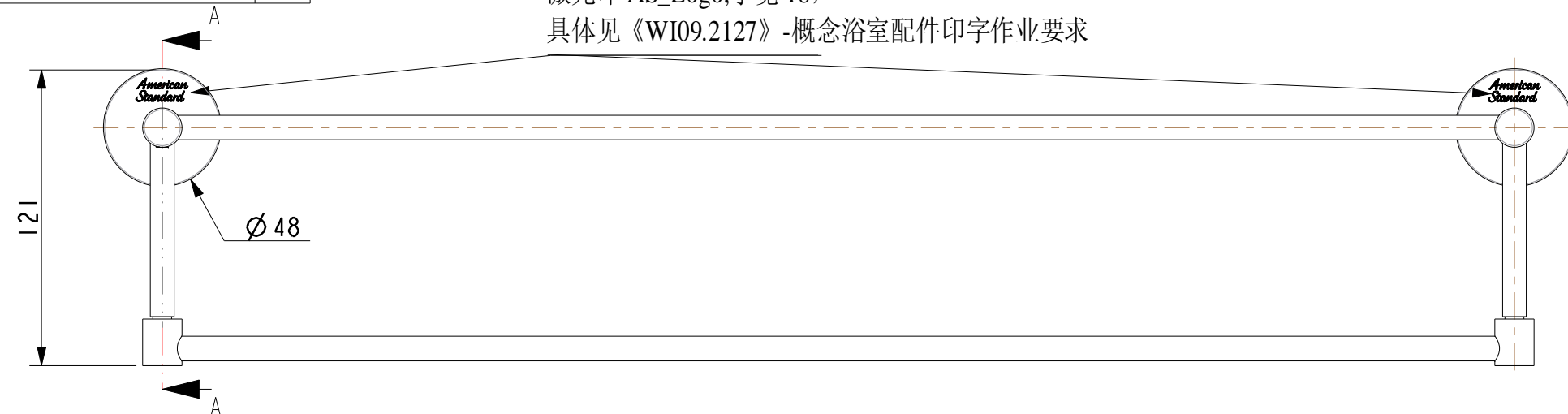
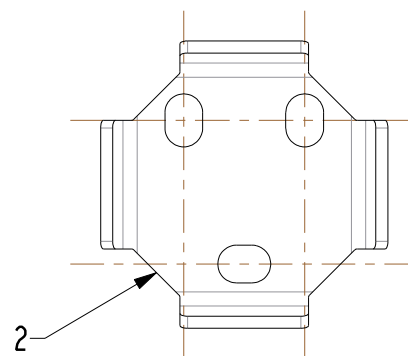


Tolerance, Unless Otherwise Stated, Is			
Above	0.5 to and including	6	±0.1
Excess	6 to and including	30	±0.2
Excess	30 to and including	120	±0.3
Excess	120 to and including	315	±0.5
Excess	315 to and including	1000	±0.8
Excess	1000 to and including	2000	±1.2

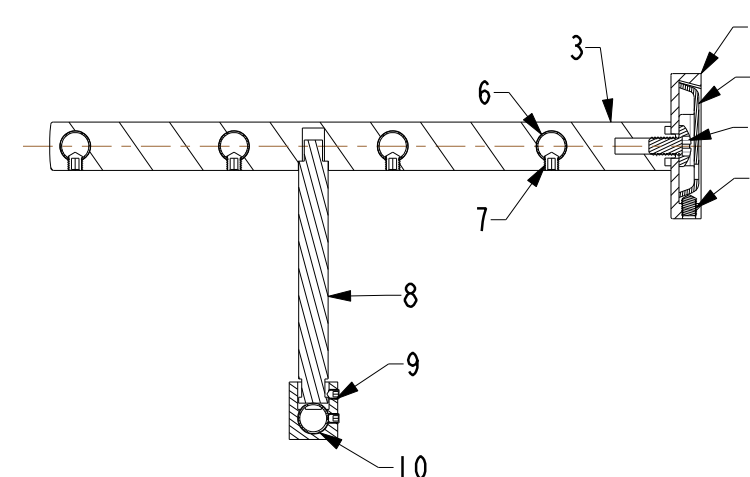
激光印 AS\_Logo, 字宽 18,  
具体见《WI09.2127》-概念浴室配件印字作业要求



SCALE 0.120



SCALE 1.000



SCALE 1.000

SCALE 1.000

技术要求:

- 按《WI10.3204》浴室配件进货检验标准检验;
- 所有尺寸为一般尺寸。

序号	料号	名称与描述	材料	数量	备注
12	159Z148107	胀套	PA66	6	
11	159Z148106	自攻螺钉ST4*28	SUS201	6	
10	159Z149504	接头	Hpb59-1	2	抛光镀铬
9	159Z149503	紧固螺钉	SUS201	4	
8	159Z149502	竖杆	SUS304	2	抛光镀铬
7	159Z149402	紧固螺钉	SUS201	4	
6	159Z149302	横杆	SUS304	5	抛光镀铬
5	159Z148105	本体螺钉M6*10	SUS201	2	
4	159Z148104	支座螺钉M5*8	SUS201	2	
3	159Z149501	本体	ZZnAl4-1	2	抛光镀铬
2	159Z148102	概念圆固定垫片	SUS201	2	
1	159Z148101	概念圆支座	ZZnAl4-1	2	抛光镀铬

DESIGNED	CHECKED	APPROVED	SCALE	MATERIAL	WEIGHT	TITLE
			0.400	Assembly		REF 概念圆毛巾架
DWG NO. FFAS1495-908500BF0						<b>American Standard</b>

REV	DESCRIPTION	DATE	NAME