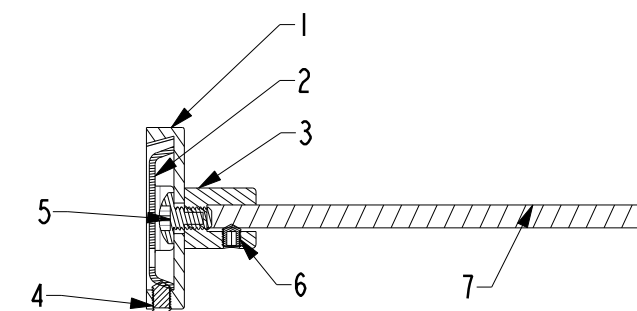
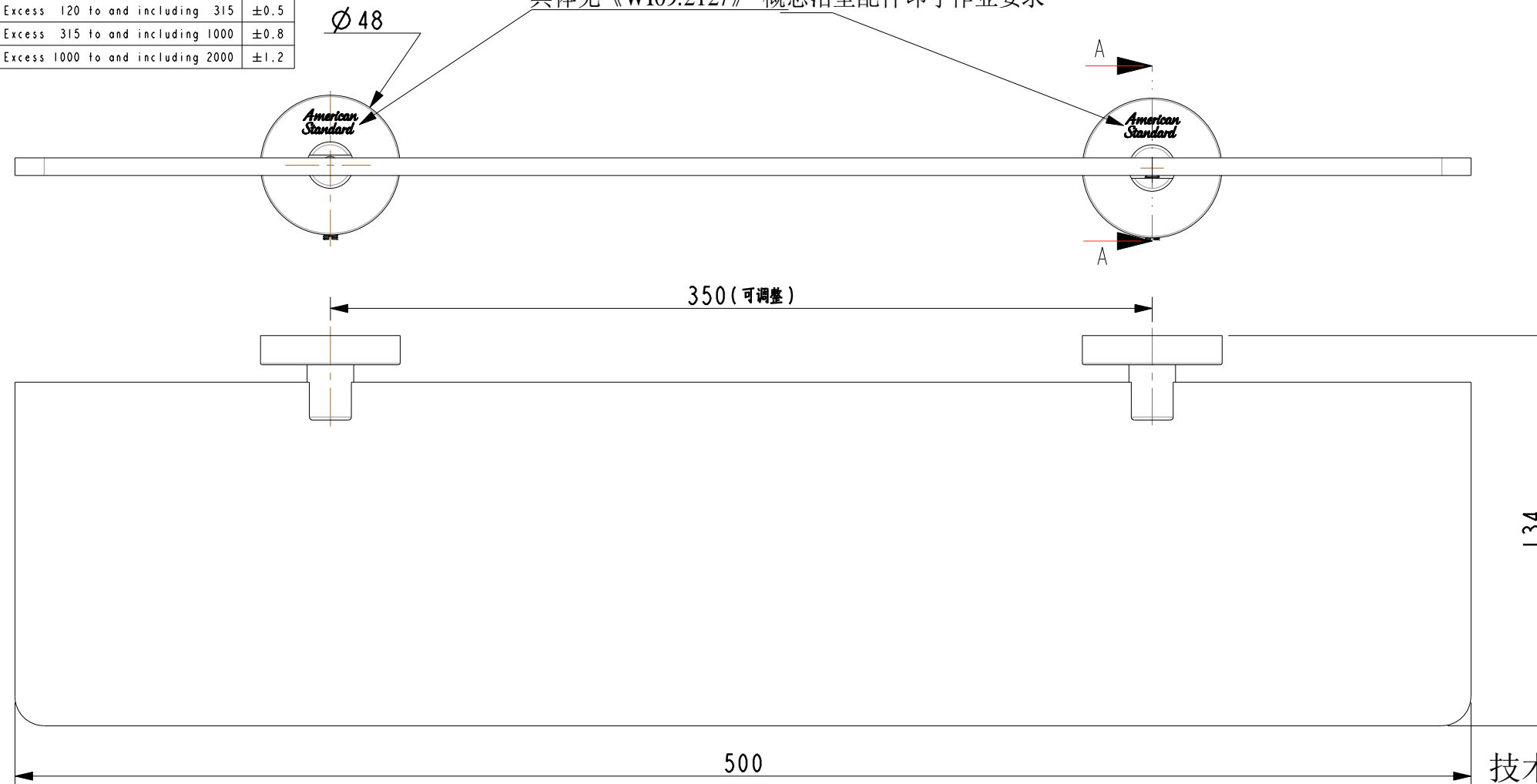
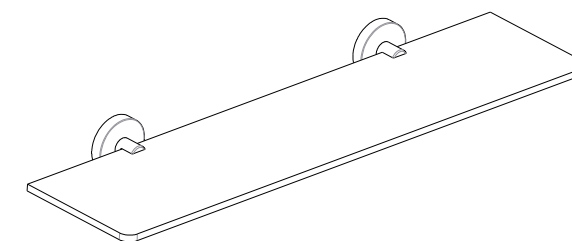


Tolerance, Unless Otherwise Stated, Is			
Above	0.5 to and including	6	±0.1
Excess	6 to and including	30	±0.2
Excess	30 to and including	120	±0.3
Excess	120 to and including	315	±0.5
Excess	315 to and including	1000	±0.8
Excess	1000 to and including	2000	±1.2

激光印 AS\_Logo, 字宽 18,  
具体见《WI09.2127》-概念浴室配件印字作业要求



SECTION A-A

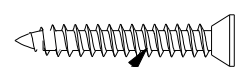


SCALE 0.167

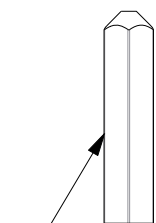
技术要求:

- 按《WI10.3204》浴室配件进货检验标准检验;
- 所有尺寸为一般尺寸。

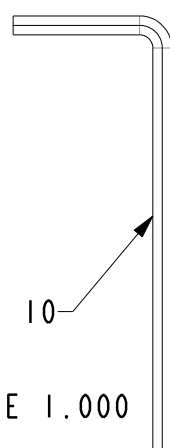
序号	料号	名称与描述	材料	数量	备注
10	159Z148108	内六角扳手	Q235-A	1	
9	159Z148107	胀套	PA66	6	
8	159Z148106	自攻螺钉ST4*28	SUS201	6	
7	159Z149103	搁板	钢化玻璃	1	磨砂
6	159Z149102	内六角螺钉	SUS201	2	
5	159Z148105	本体螺钉M6*10	SUS201	2	
4	159Z148104	支座螺钉M5*8	SUS201	2	
3	159Z149101	本体	ZZnAl4-1	2	抛光镀铬
2	159Z148102	概念圆固定垫片	SUS201	2	
1	159Z148101	概念圆支座	ZZnAl4-1	2	抛光镀铬



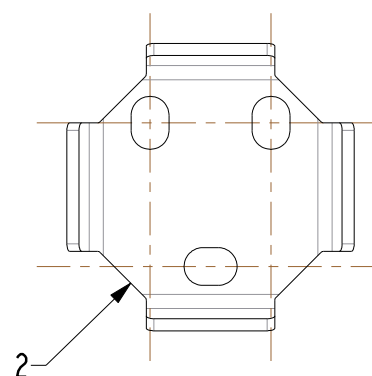
SCALE 1.000



SCALE 1.000



SCALE 1.000



SCALE 1.000

REV	DESCRIPTION	DATE	NAME

DESIGNED			TITLE
CHECKED			REF
APPROVED			概念圆玻璃搁架_可调节
SCALE	MATERIAL	WEIGHT	DWG NO.
0.500	Assembly		FFAS1491-908500BF0

**American Standard**