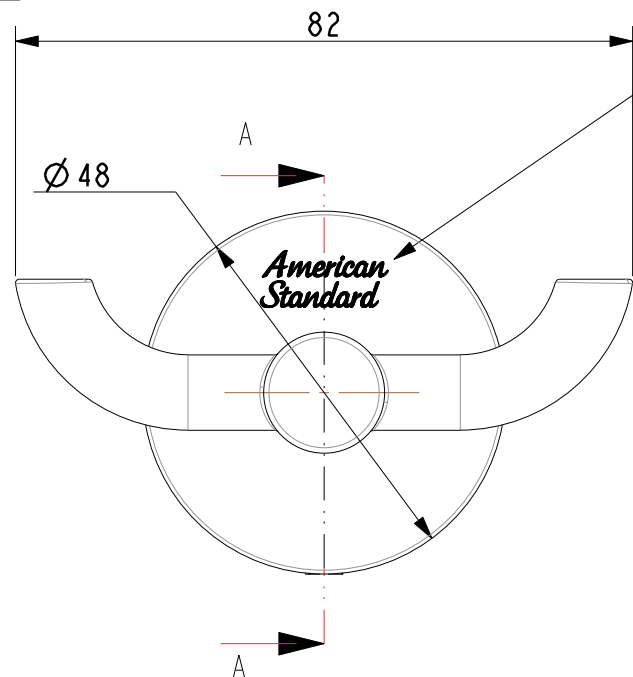
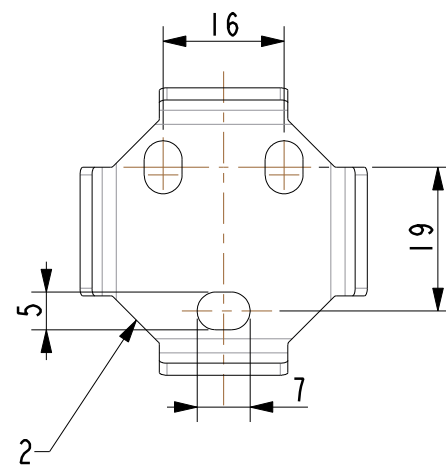
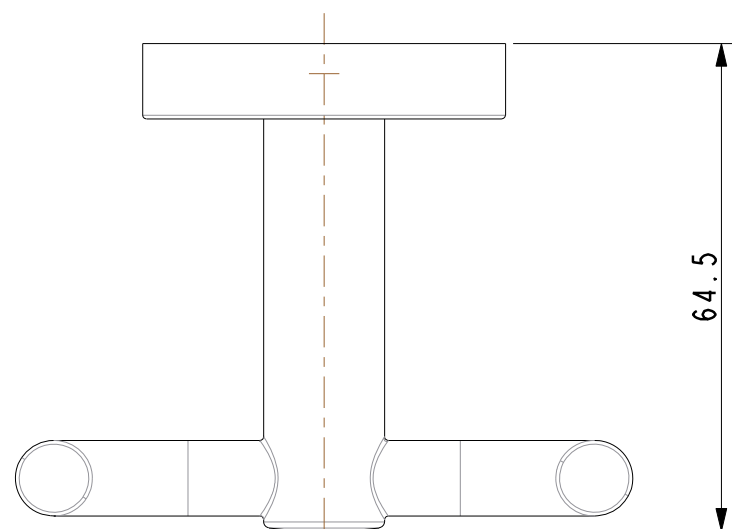
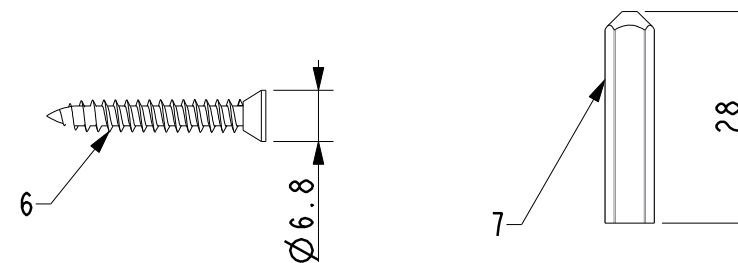
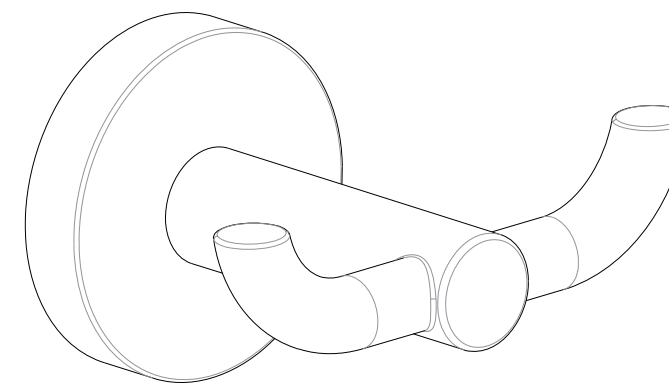
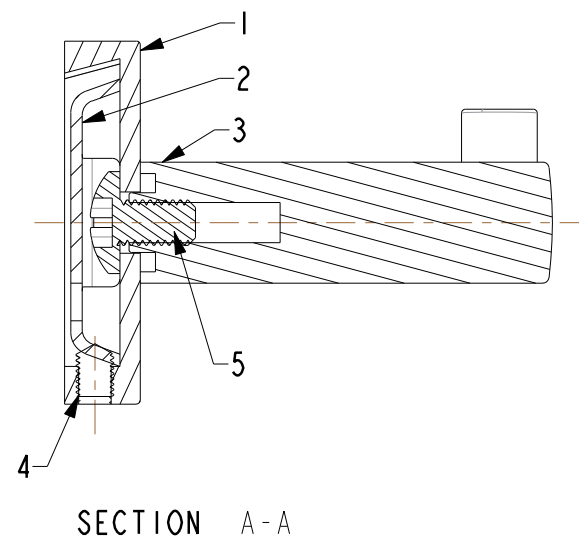


Tolerance, Unless Otherwise Stated, Is			
Above	0.5 to and including	6	±0.1
Excess	6 to and including	30	±0.2
Excess	30 to and including	120	±0.3
Excess	120 to and including	315	±0.5
Excess	315 to and including	1000	±0.8
Excess	1000 to and including	2000	±1.2



激光印 AS_Logo,字宽 18,
具体见《WI09.2127》-概念浴室配件印字作业要求



技术要求:

- 按《WI10.3204》浴室配件进货检验标准检验;
- 所有尺寸为一般尺寸。

序号	料号	名称与描述	材料	数量	备注
7	159Z148107	胀套	PA66	3	
6	159Z148106	自攻螺钉ST4*28	SUS201	3	
5	159Z148105	本体螺钉M6*10	SUS201	1	
4	159Z148104	支座螺钉M5*8	SUS201	1	
3	159Z148103	概念圆本体	ZZnA14-1	1	抛光镀铬
2	159Z148102	概念圆固定垫片	SUS201	1	
1	159Z148101	概念圆支座	ZZnA14-1	1	抛光镀铬

DESIGNED			TITLE		
CHECKED			REF		
APPROVED			概念圆衣挂钩		
SCALE	MATERIAL	WEIGHT	DWG NO.		American Standard
1.000	Assembly		FFAS1481-908500BF0		

REV	DESCRIPTION	DATE	NAME