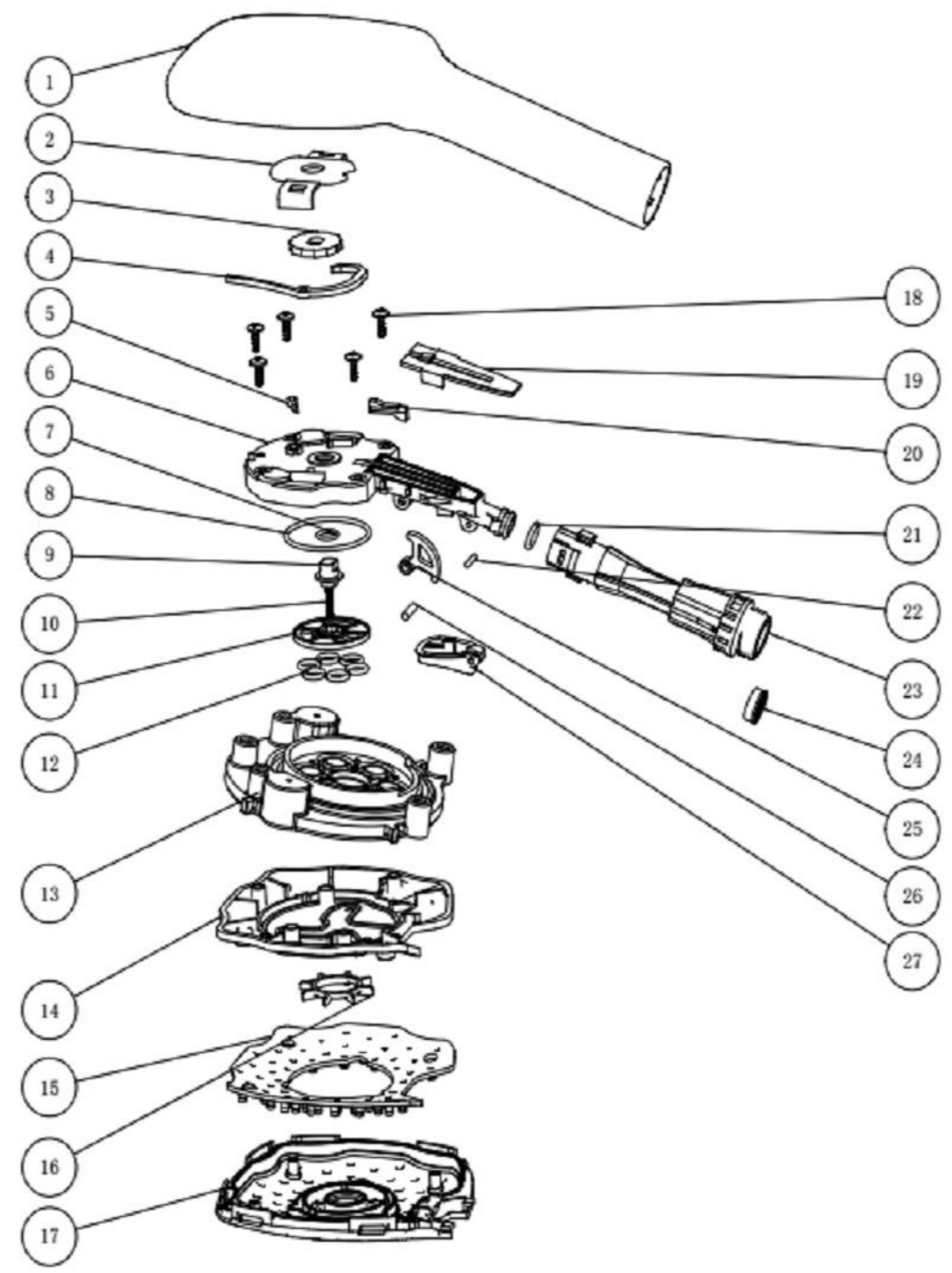
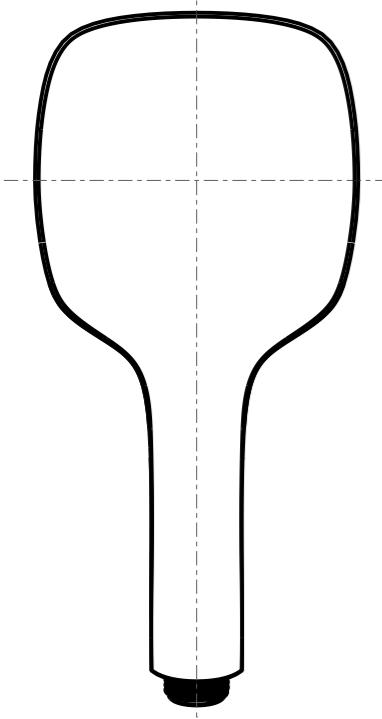
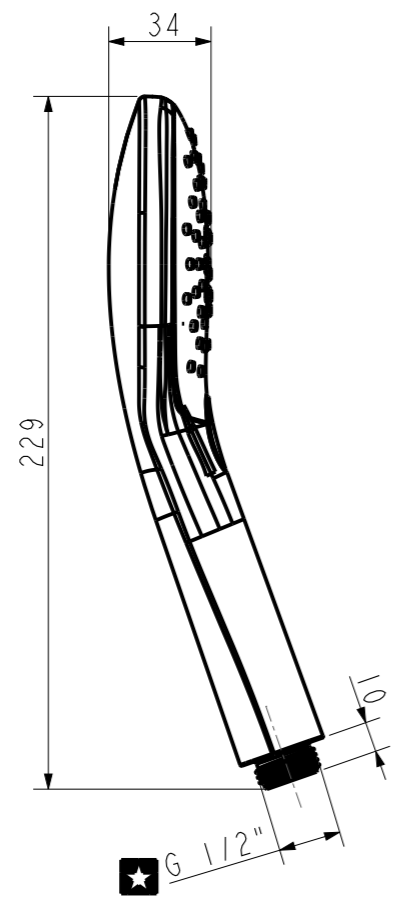
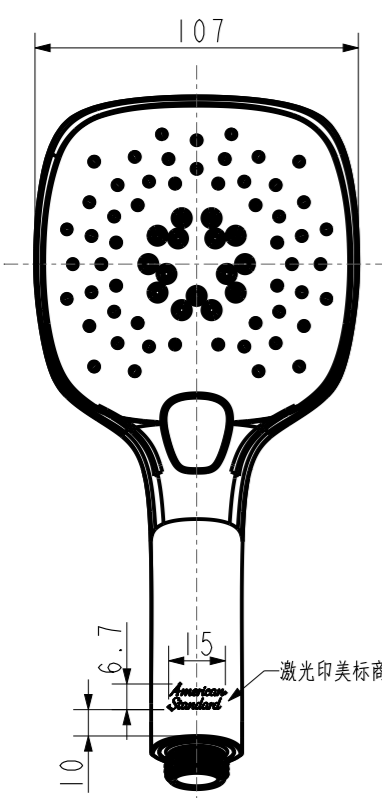


2020年12月1日  
A/1

Tolerance, Unless Otherwise Stated, Is			
Above	0.5 to and including	6	±0.1
Excess	6 to and including	30	±0.2
Excess	30 to and including	120	±0.3
Excess	120 to and including	315	±0.5
Excess	315 to and including	1000	±0.8
Excess	1000 to and including	2000	±1.2



No.	Description(EN)	Description(CN)	QTY	Material	Remark
27	Button	按钮	1	ABS	
26	Bar	摆杆	1	SUS304	
25	Swinger	摆轴	1	POM	
24	Regulator	节水片	1		Neoperl 58.7409.1
23	Shaft	芯轴	1	POM	
22	Pin	销	1	SUS304	
21	O-Ring	O-Ring	1	EPDM	8*1.9
20	Slider	滑块	1	POM	
19	Housing-Top	固定座上盖	1	ABS	
18	Screw	自攻螺钉	5	SUS304	
17	Cap	面盖	1	ABS	
16	Rotor	转子	1	POM4520	
15	TPR Cover	TPR面盖	1	TPR	
14	Water Divide	分水体	1	ABS	
13	Water Divide	分水盘	1	ABS	
12	O-Ring	异型O-Ring	1	EPDM	
11	Turntable	转盘	1	POM	
10	Spring	弹簧	1	SUS304	
9	Couple Axle	联动轴	1	POM	
8	O-Ring	O-Ring	1	NBR	34.65*1.78
7	O-Ring	O-Ring	1	NBR70	7*1.5
6	Housing	固定座	1	ABS	
5	Pawl	止转爪	1	POM	
4	Ratchet	棘爪	1	POM	
3	Ratchet	棘轮	1	POM	
2	Cover	扣盖	1	ABS	
1	Body	本体	1	ABS	

- 技术要求：
- 花洒为三功能，单按键切换，切换循环为：全功能 - 外圈 - 全功能 - 内圈 - 全功能；
  - 花洒主体材料为ABS，表面镀铬；
  - 面板材料为ABS，颜色为W34（松霖），喷嘴TPR颜色为GR37（松霖）；
  - 花洒螺纹部分采用塑料保护套保护，面板采用泡壳保护再装入气泡袋；
  - 带"★"为重要尺寸，螺纹要求通规通，止规止。

REV	DESCRIPTION	DATE	NAME

DESIGNED	付天	2020.11.17	TITLE	
CHECKED	段光	2020.11.17	REF	
APPROVED	王平	2020.11.17		IDS三功能手持花洒
SCALE	MATERIAL	WEIGHT	DWG NO.	
2:5			FFAS9H08-000500BC0	American Standard