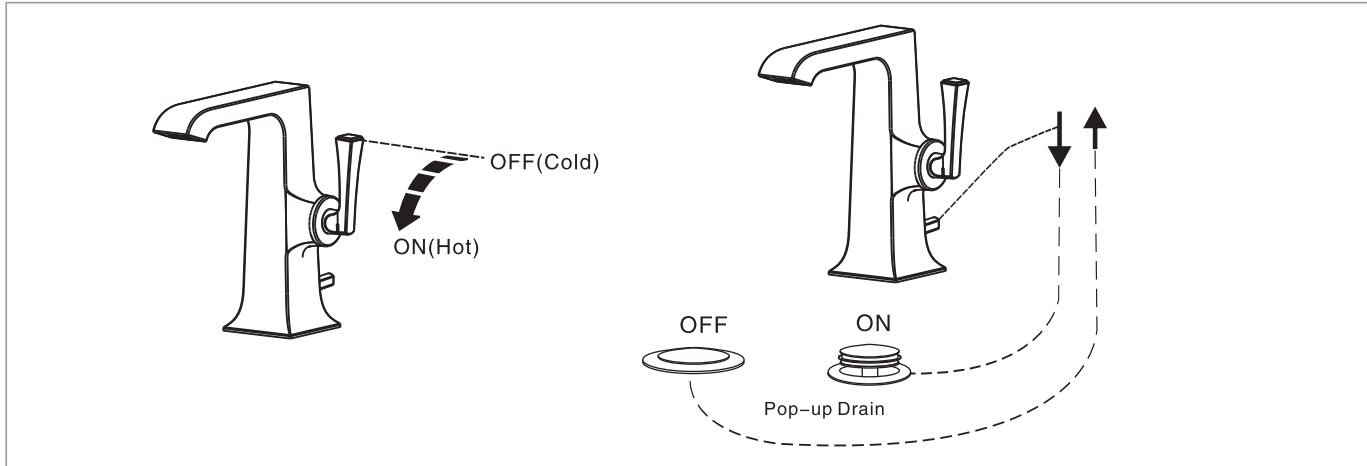


Test / Usage

1 Test

- * Move handle down into “OFF” position. Turn on supply angle valve to check all connections for leak.
- * Operate handle up and down, left and right to flush water lines thoroughly.

2 Usage

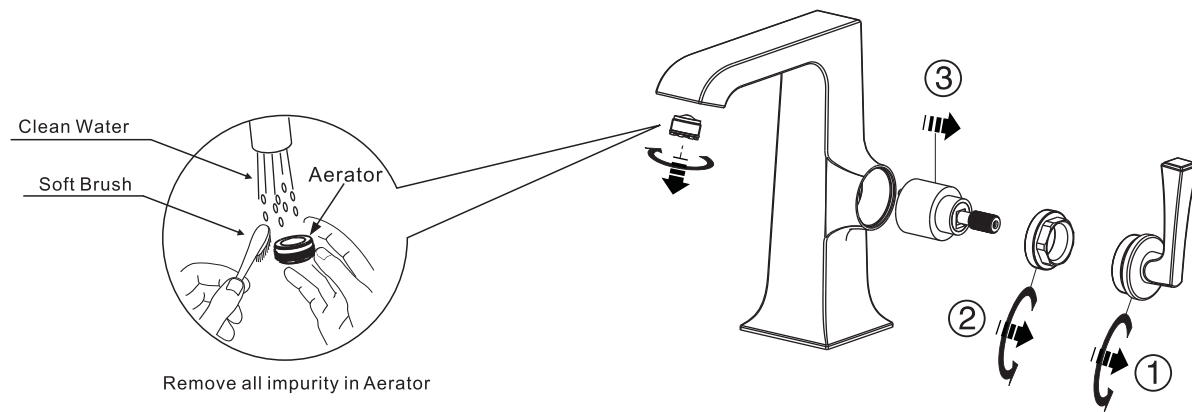


Trouble Shooting Guide

Trouble	Checkpoint	Contents	Action
Poor flow rate	Aerator	Check any impurities.	Remove all impurities.
	Angle valve	Check valve position.	Open it to full valve
	Flexible hose	Check if hose is twisted.	Untwist the hose.
Leakage	Cartridge packing	Check cartridge install.	When packing is damaged, replace the cartridge.
	Hose junction	Check the connection.	Check the existence of packing and wind it up sufficiently
Deviant Temperature	Supply valve	Check if the water from supply valve is enough or not	Increase water supply
	Supply system	Check if the supply pipe connected correct or not	Connect the hot and cold water pipe correctly

Care & Maintenance

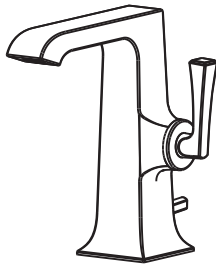
- * AERATOR may accumulate dirt causing distorted and reduced water flow. Remove and clean AERATOR and then replace it.
- * If faucet drips, operate handle several times from "off" to "on". Do not apply excessive force.
- * Clogged CARTRIDGE inlets may cause flow reduction in hot or cold water. To clean inlets, turn off water supply firstly.
- * If you need to maintain the faucet, please follow the below process. After maintenance, please reset the parts and check flow performance.



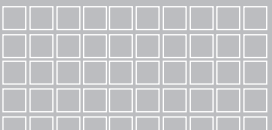
Attention:
Please leave manual with customer
post installation.

Kastello

FFAS1601-101500BT0
Kastello SH Basin Mixer W/ Pop-up Drain



American Standard



Installation &
Operation Instructions

Thank you for selecting American-Standard - the benchmark of fine quality for over 100 years.
To ensure that your installation proceeds smoothly--please read these instructions carefully before you begin.

- * American Standard continually improves our product design and performance and reserves the right to modify the dimension and specification of our products accordingly without any prior notification.
- * This installation instruction sheet is for your reference only, the dimension and specification is subject to the actual products.

Pre-Installation Checks

- * All instruction procedures must comply in strict accordance with applicable local plumbing and building codes.
- * Remove all impurity in pipes before beginning to avoid clogging. Connect faucet pipes correctly.
- * Check installation distances in the Dimension diagram to ensure correct installation.

Conditions for use

- * Water pressure condition: 0.05~0.75MPa (Recommended water pressure condition: 0.1~0.5MPa)
- * Environment Temperature: 1~55℃
- * Water Temperature: 4℃ ~ 90℃, Recommended the highest hot water temperature 60℃.
- * Steam is not allowed to use. The cold and hot water pipes must not be reserved.

When in the process of installation, grab the whole body. Do not grab handle only.

Recommended Tools and Materials



Adjustable Wrench



Screwdriver



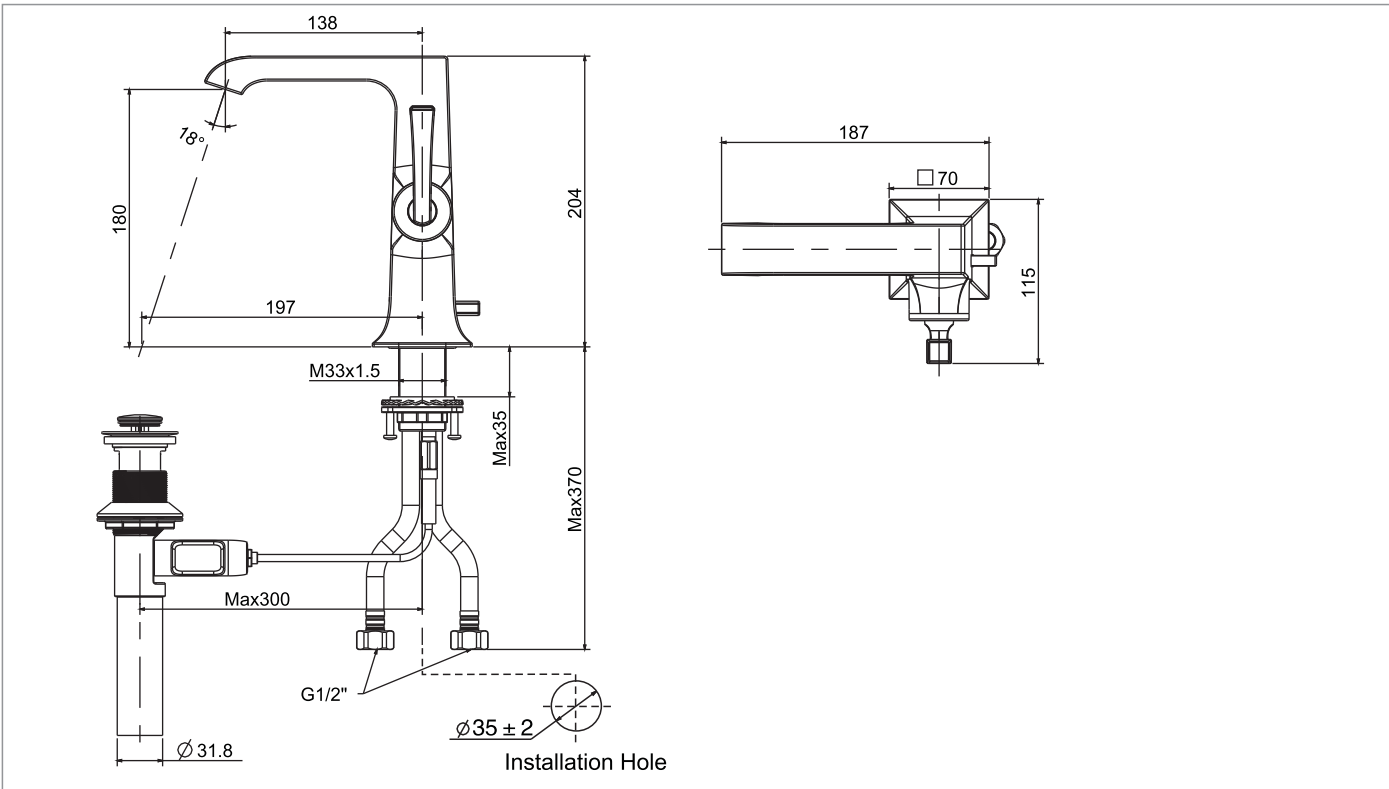
Tape Measure



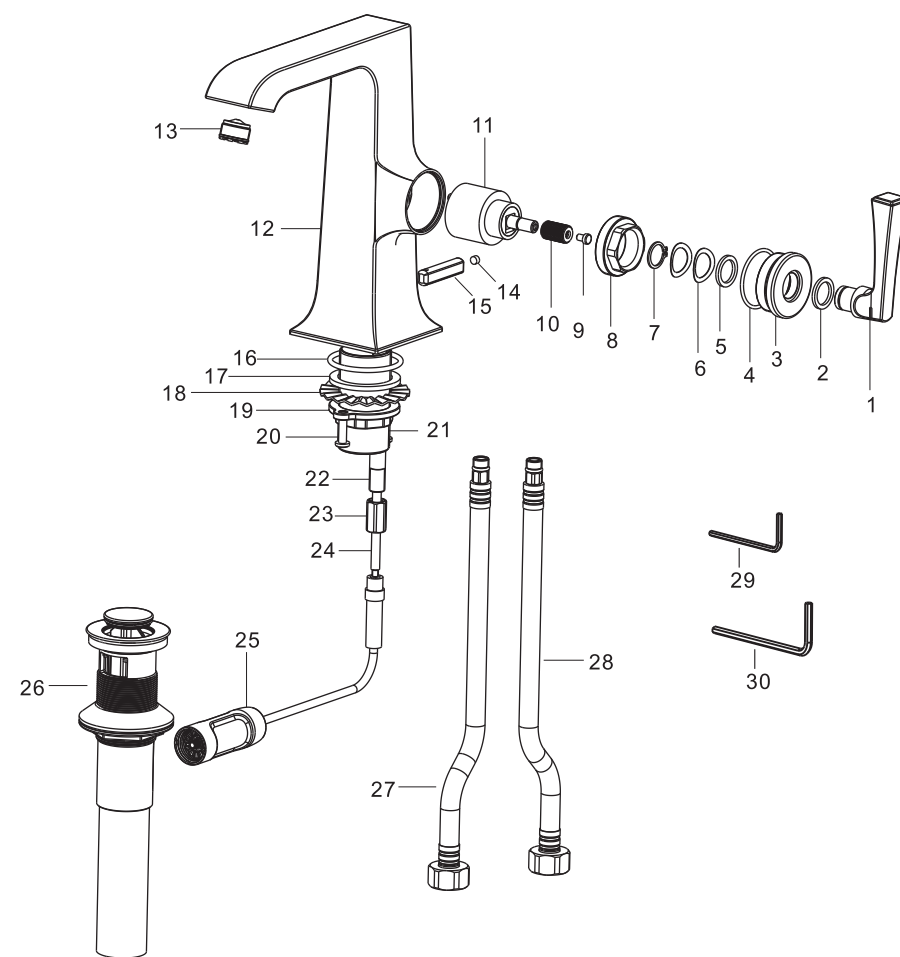
Pipe Wrench

Dimension

Unit: mm



Parts List

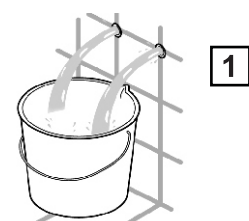


Parts List

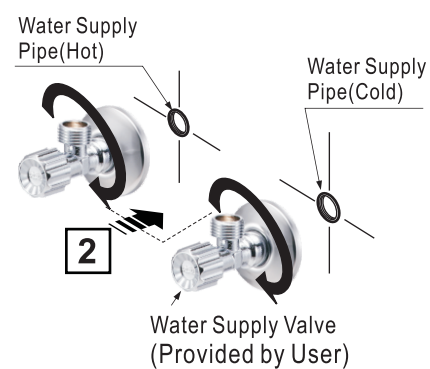
No.	Part Name	Q'ty
1	Handle	1
2	Washer	1
3	Cap	1
4	O-ring	1
5	Washer	1
6	Washer	1
7	Locating piece	1
8	Nut	1
9	Screw	1
10	Bushing	1
11	Cartridge	1
12	Body	1
13	Aerator	1
14	Screw	1
15	Handle	1
16	O-ring	1
17	Washer	1
18	Washer	1
19	Nut	1
20	Screw	2
21	Shank	1
22	conduit	1
23	Nut	1
24	Lever	1
25	Transmission device	1
26	Drain	1
27	Hose(red)	1
28	Hose(blue)	1
29	In-hex wrench	1
30	In-hex wrench	1

Installation

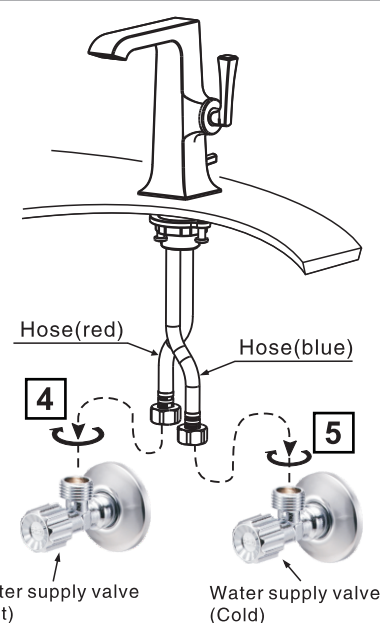
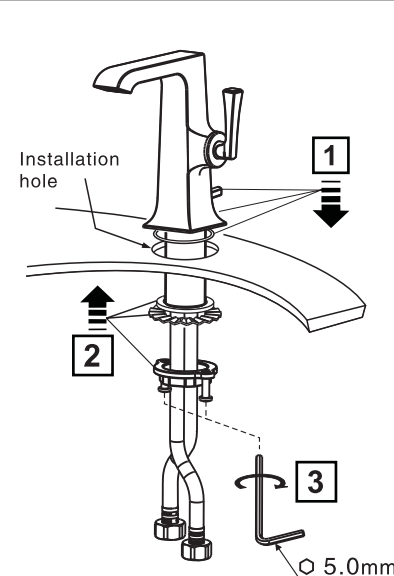
1 Preparation



* Consult the dimension drawing and lay the pipes.
* Wash and clean the water supply pipeline.



2 Faucet Installation



3 Drain Installation

