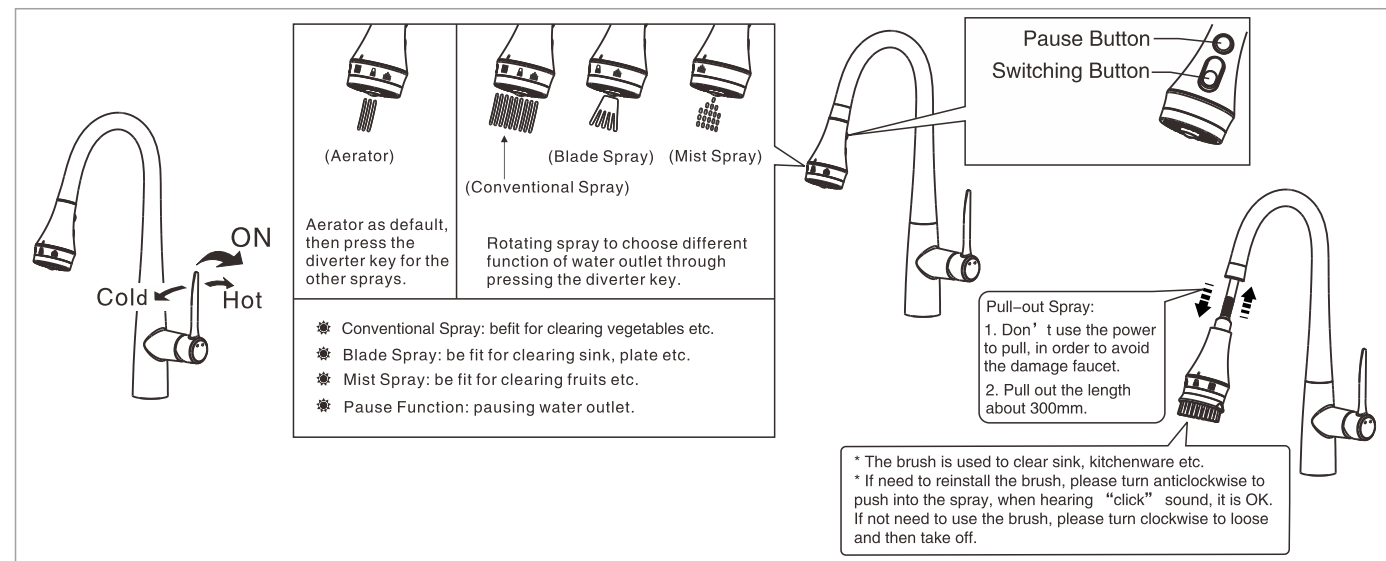


Test / Usage

1 Test

- * Move handle down into "OFF" position. Turn on supply angle valve to check all connections for leak.
- * Operate handle up and down, left and right to flush water lines thoroughly.

2 Usage

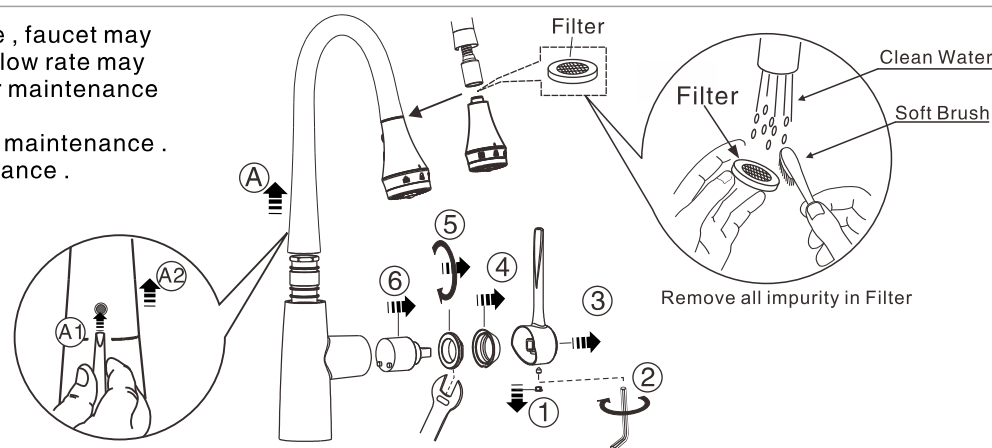


Trouble Shooting Guide

Trouble	Checkpoint	Contents	Action
Poor flow rate	Regulator	Check any impurities.	Remove all impurities.
	Angle valve	Check valve position.	Open it to full valve
	Flexible hose	Check if hose is twisted.	Untwist the hose.
Leakage	Cartridge packing	Check cartridge install.	When packing is damaged, replace the cartridge.
	Hose junction	Check the connection.	Check the existence of packing and wind it up sufficiently
Deviant Temperature	Supply valve	Check if the water from supply valve is enough or not	Increase water supply
	Supply system	Check if the supply pipe connected correct or not	Connect the hot and cold water pipe correctly

Care & Maintenance

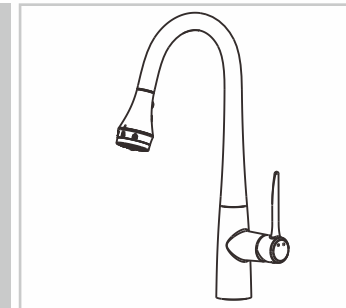
- * After using for a period of time , faucet may be clogged or parts damage . Flow rate may be reduce , and replacement or maintenance is need .
- * Water must be cut off before maintenance . Follow below steps for maintenance .



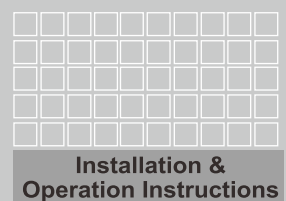
Attention:
Please leave the manual with the customer after installation is finished.

FFAS5634-5T15L0BT0
Multi-function kitchen faucet

FFAS5634-5015L0BF0
Multi-function kitchen faucet



American Standard



Thank you for selecting American-Standard - the benchmark of fine quality for over 100 years.
To ensure that your installation proceeds smoothly--please read these instructions carefully before you begin.

- * American Standard always keep raising and improving the product design and performance, and reserve the right to modify the dimension and specification. At this case, we will not inform you separately.
- * This installation instruction sheet is for your reference only, the dimension and specification is subject to the actual products.

Pre-Installation Checks

All instruction procedures must comply in strict accordance with applicable local plumbing and building codes

- * Remove all impurity in pipes before beginning to avoid clogging. Connect faucet pipes correctly. Make sure the cold water hose is connected to the right side and the hot water hose to the left.
- * Check installation distances in the Dimension diagram to ensure correct installation.

Conditions for use

- * Water pressure condition: 0.05~0.75MPa (Recommended water pressure condition: 0.1~0.5Mpa)
- * Environment Temperature: 1~55℃
- * Steam is not allowed to use.
- * The cold and hot water pipes must not be reserved.

When in the process of installation, grab the whole body. Do not grab handle only.

Recommended Tools and Materials



Adjustable Wrench



Screwdriver

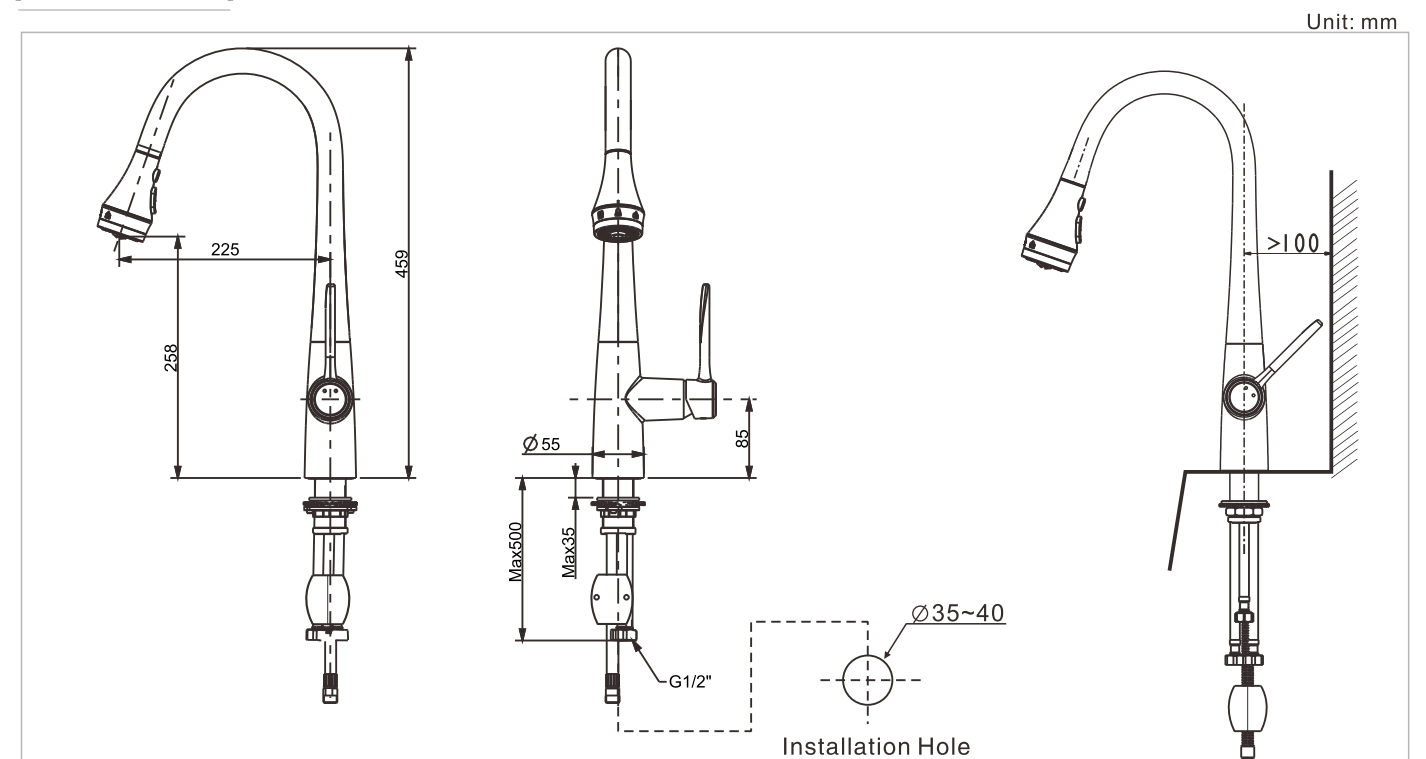


Tape Measure

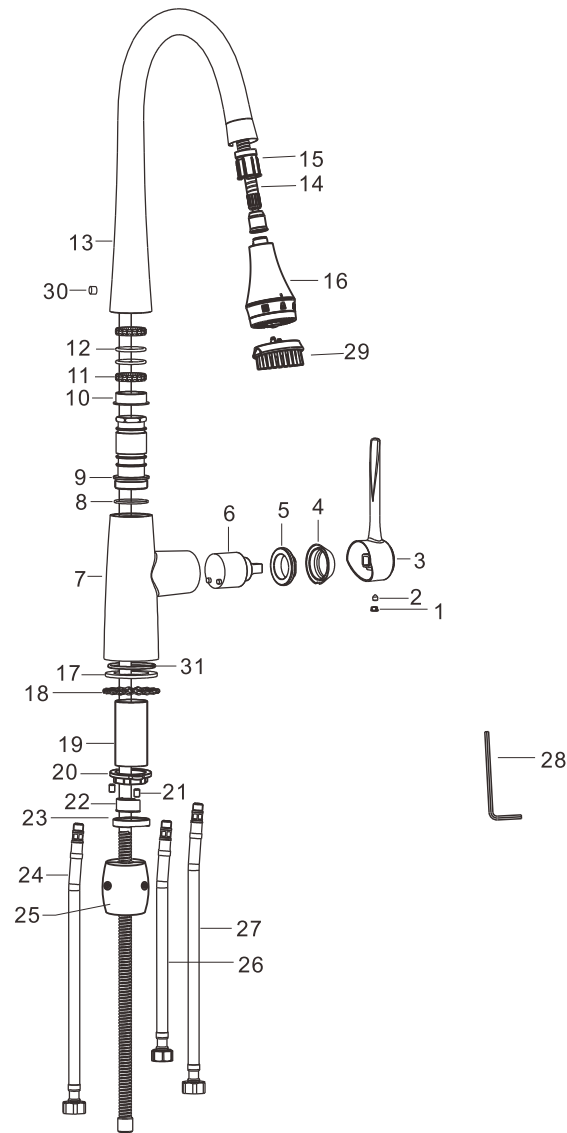


windtight swathe

Dimension



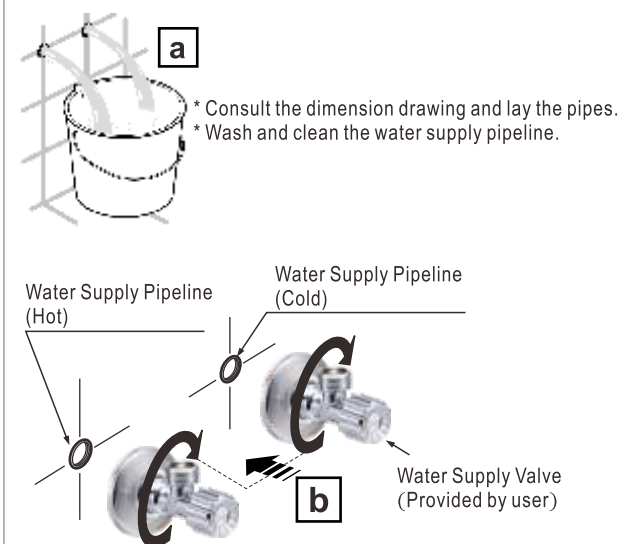
Parts List



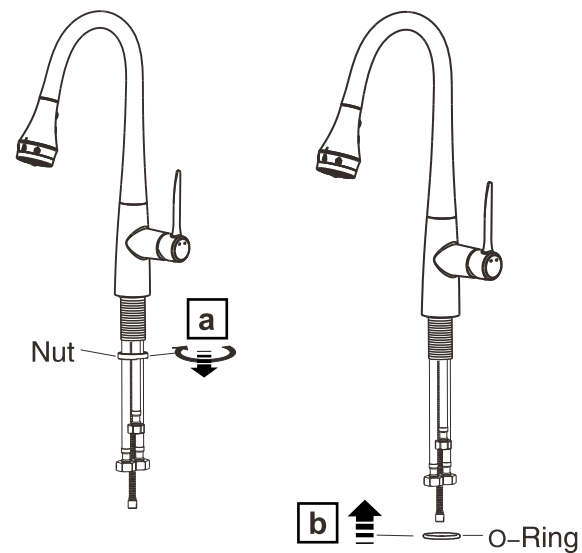
Parts List		
No.	Part Name	Q'ty
1	Index Button	1
2	Screw	1
3	Handle	1
4	Cap	1
5	Nut	1
6	Cartridge	1
7	Body	1
8	O-Ring	1
9	Connector	1
10	Bush	1
11	Washer	2
12	O-Ring	2
13	Elbow pipe	1
14	Hose(1500mm)	1
15	Bush	1
16	Spray	1
17	Washer	1
18	Washer	1
19	Shank	1
20	Nut	1
21	Screw	2
22	Pipe clamp	1
23	Nut	1
24	Hose (Red)	1
25	Weight	1
26	Hose (Blue)	1
27	Connect Hose	1
28	In-hex Wrench	1
29	Brush	1
30	Plug	1
31	O-Ring	1

Installation

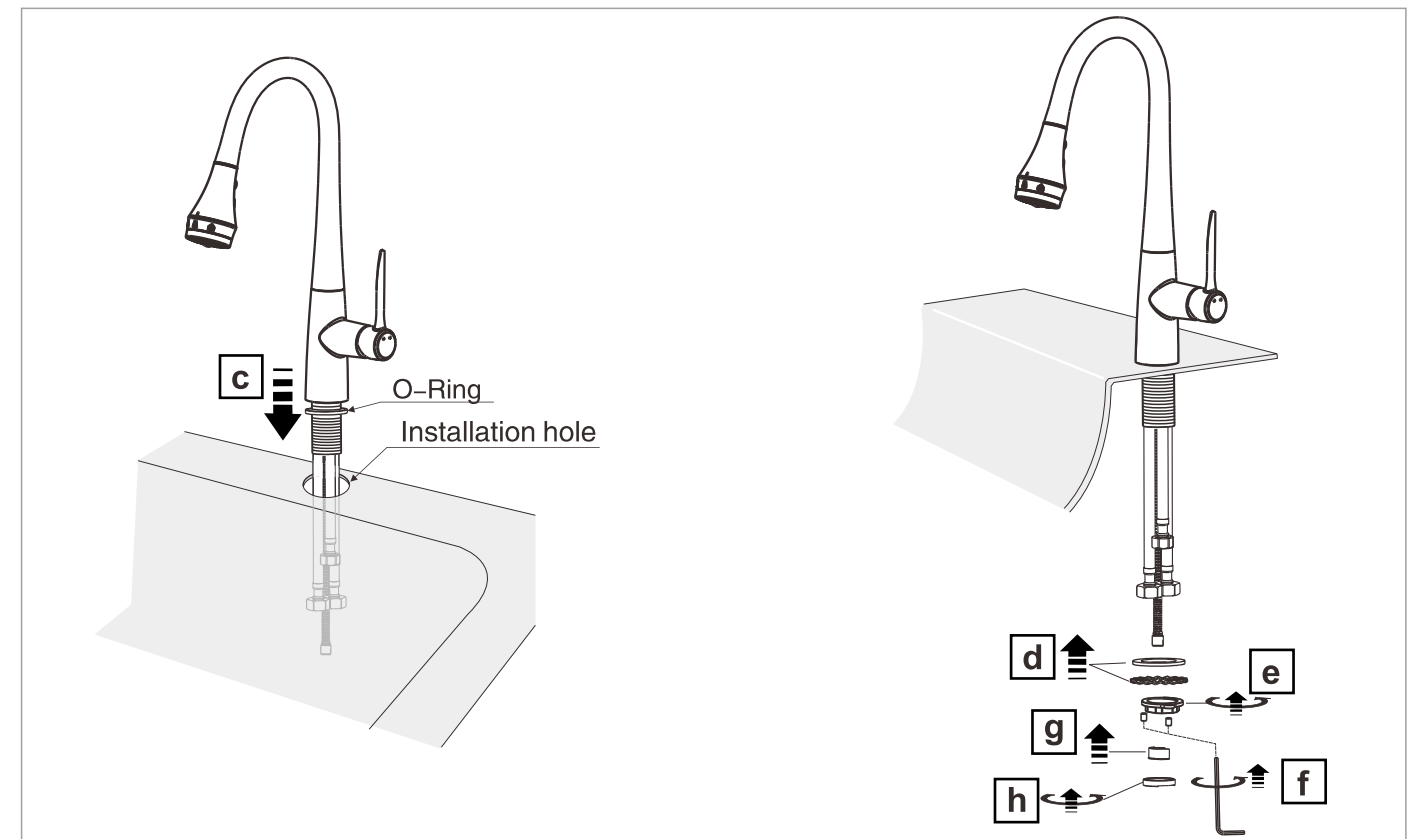
1 Preparation



2 Mounting the O-Ring



3 Installing the Faucet



4 Installing the heavy hammer and Connecting the Pipeline

