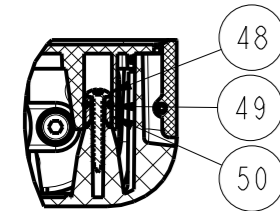
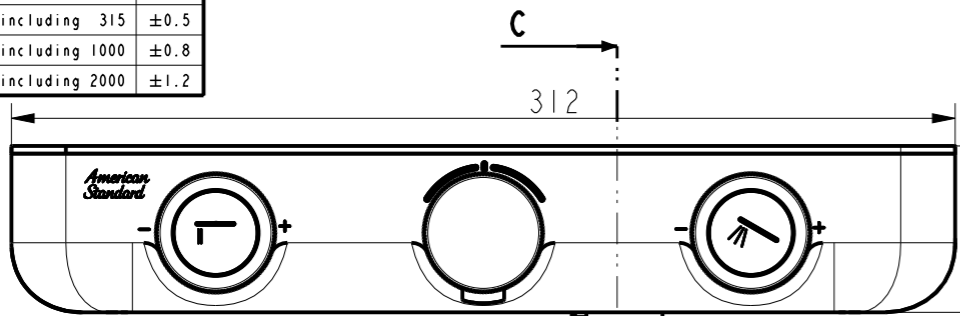
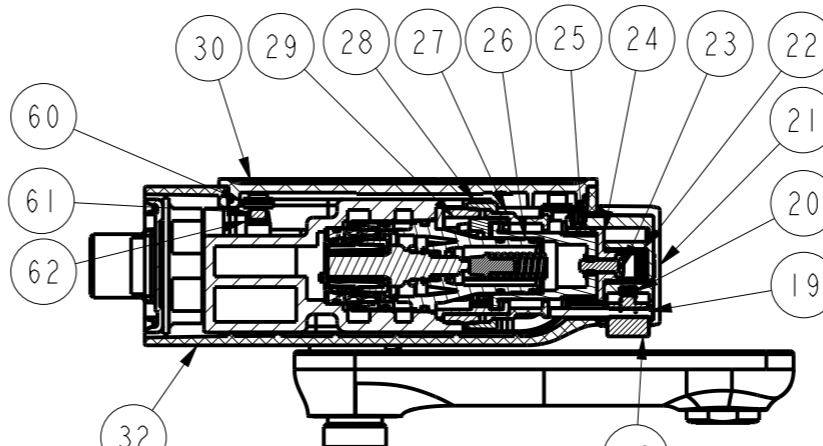
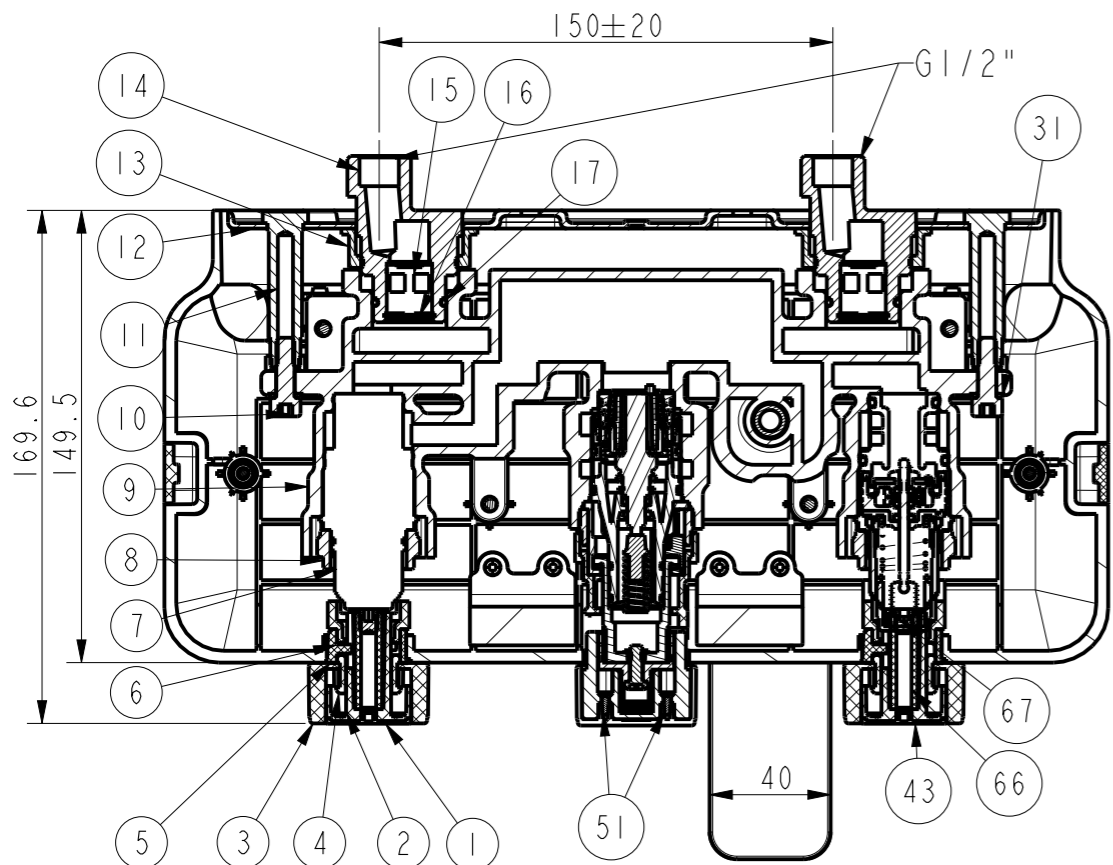


Tolerance, Unless Otherwise Stated, Is			
Above	0.5 to and including	6	±0.1
Excess	6 to and including	30	±0.2
Excess	30 to and including	120	±0.3
Excess	120 to and including	315	±0.5
Excess	315 to and including	1000	±0.8
Excess	1000 to and including	2000	±1.2

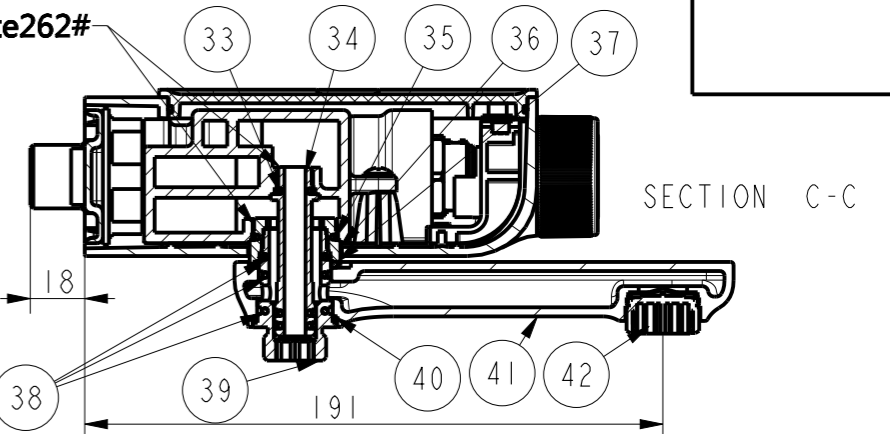


SECTION CE-CE

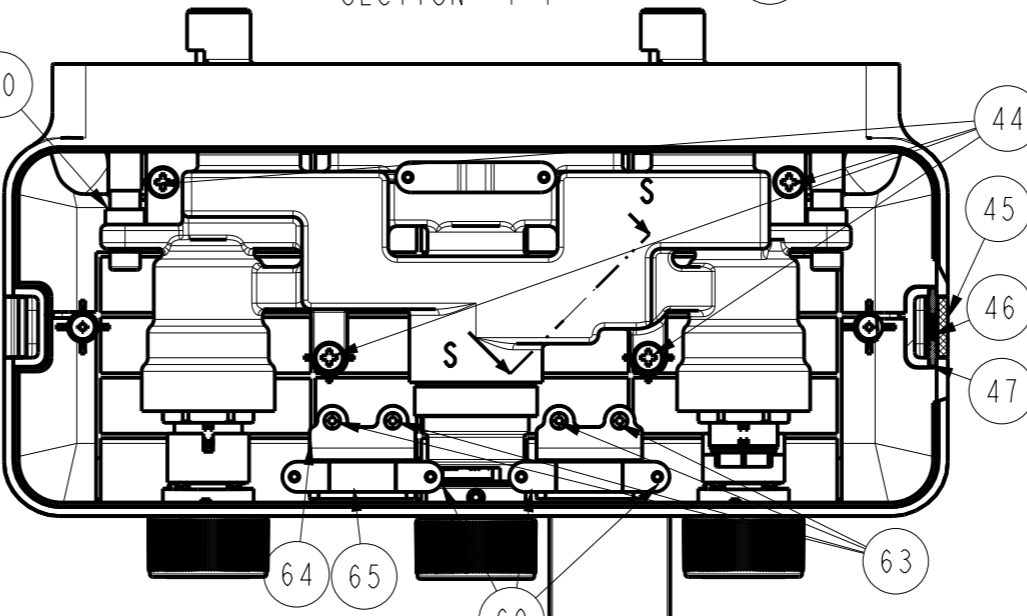


SECTION T-T

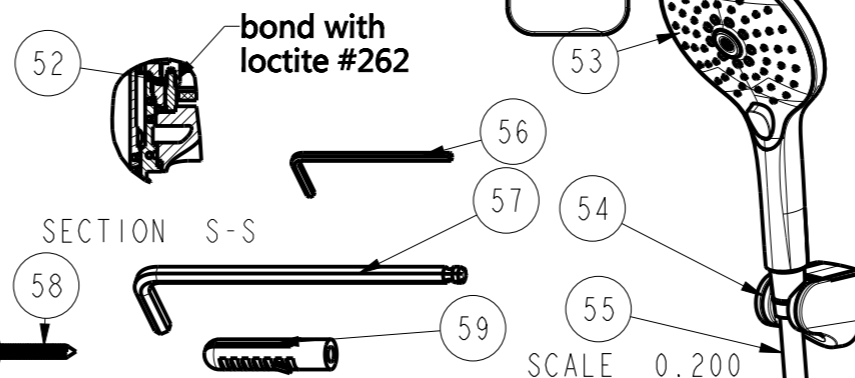
bonding with Loctite262#



SECTION C-C



SECTION N-N



SECTION S-S

SCALE 0.200

59	FF1-CN521Z00000429	Anchor	PP	6	White
58	FF1-CN521N00000197	Screw	SUS304	6	
57	FF1-CN521Z0012799S	Wrenth ( SW5)	Q235	1	
56	FF1-CN521Z00000254	Wrenth ( SW2.5)	Q235	1	
55	FF1-CN521T0004199P	1.5M PVC Silver shower hose	Assem	1	
54	FF1-CN521H00001950	Shower holder	Assem	1	CP
53	FF1-CN521H00006350P	Rain click 3-function hand shower	Assem	1	
52	FF1-CN521N00005999S	M3 Pin	SUS304	1	
51	FF1-CN521N00000173	Screw M2.5*6	SUS304	2	
50	FF1-CN521Z0012699S	Pin for plate	SUS304	2	
49	FF1-CN521G00000108	O ring 6*1.85	NBR	2	
48	FF1-CN521N00000279	Screw	SUS304	2	
47	FF1-CN521Z00009350B	Pin for side hook	SUS304	4	
46	FF1-CN521Z00009499S	Spring for side hook	SUS304	2	
45	FF1-CN521Z0007150P	Side hook	ABS	2	CP
44	FF1-CN521N00000239	Screw M2.5*6	SUS304	4	
43	FF1-CN521F0004450P	Cover (hand shower)	ABS	1	Matted
42	FF1-CN521A00000079	Regulator	Assem	1	
41	FFZ20021-0022850PL	Spout	GKMs60Fk	1	CP
40	FF1-CN521G0004499T	Washer 28*25*2	NBR	1	CP
39	FF1-CN521J0014750B	Spout connector	HPt69-1	1	CP
38	FF1-CN521G00000107	O Ring 17.8* 72	NBR	3	
37	FF1-CN521G0004399T	Waher 28*24*2	NBR	1	
36	FF1-CN521J0014650B	Spout bushing	HPt69-1	1	CP
35	FF1-CN521G00000254	O Ring 23.52*1.78	NBR	1	
34	FF1-CN521J0014899B	Connector for hand shower	HPt69-1	1	
33	FF1-CN521G00000276	O Ring # 10* # 2	NBR	3	
32	FF1-CN521J0014250P	Body Shell	ABS	1	CP
31	FF1-CN521Z00000153	Spring washer Ø6	SUS304	2	
30	FF1-CN521F0006609P	Top plate	ASA	1	White
29	FF1-CN521N00005050B	Lock nut for THM cartridge	HPt69-1	1	
28	FF1-CN521N00005150B	Lock nut for THM restrictor	HPt69-1	1	
27	FF1-CN521Z00008499P	THM restrictor	POM	1	
26	FF1-CN521C00002099P	THM cartridge	Assem	1	
25	FF1-CN521N00000187	Screw M5	SUS304	1	
24	FF1-CN521J0014499B	Adapter for THM cartridge	HPt69-1	1	
23	FF1-CN521N00000194	Screw	SUS304	1	
22	FF1-CN521L0006150X	THM handle	ZZnA4-1	1	CP
21	FF1-CN521L0006150P	THM handle bushing	ABS	1	CP
20	FF1-CN521Z00000182	Spring	SUS304	1	
19	FF1-CN521N00006099S	Screw ( M3*33)	SUS304	1	
18	FF1-CN521J0010950X	Button for THM handle	ZZnA4-1	1	CP
17	FF1-CN521G00000126	O Ring 15.54*2.62	NBR	2	
16	FF1-CN521Z00008599S	Clasp for check valve	SUS304	2	
15	FF1-CN521Z00005199	Check valve	Assem	2	
14	FF1-CN521J0014399B	S connector	HPt69-1	2	
13	FF1-CN521N00005299B	Lock nut for fixing plate	HPt69-1	2	
12	FF1-CN521F00006899S	Fixing plate	SUS304	1	
11	FF1-CN521N00004899S	Bolt ( M6)	SUS304	2	
10	FF1-CN521N00000123	Screw M6-20	SUS304	2	
9	FFZ20021-0022950PL	Body	GKMs60Fk	1	CP
8	FF1-CN521N00002250	Lock nut for push button cartridge	HPt69-1	2	
7	FF1-CN521C00000499	Push button cartridge	Assem	2	
6	FF1-CN521J0010599P	Handle Bushing	POM	2	Grey
5	FF1-CN521G00003799P	Washer ( 26*21*0.2)	TERLON	2	
4	FF1-CN521J0010699P	Handle connector	POM	2	Blank
3	FF1-CN521L0006250P	Push button handle	ABS	2	CP
2	FF1-CN521J0014509P	hand button	POM	2	White
1	FF1-CN521F00008650P	Cover (Spout)	ABS	1	Matted
NO.	Part No.	Description	Material	QTY	Remark

70	FF1-CN521N0007599S	Lock Nut	SUS304	2	
69	FF1-CN521N00000133	Screw M3X4	SUS304	8	
68	FF1-CN521Z00000268	Sucker	Assem	2	
67	FF1-CN521N00000223	Screw M6*8	SUS304	2	
66	FF1-CN521Z0013499T	Adjustable pole	POM	2	
65	FF1-CN521Z0013699T	Plate for cover	S403	2	
64	FF1-CN521Z0013799P	Magnet holder for shell	POM	2	
63	FF1-CN521N00000167	Screw M3	SUS304	4	
62	FF1-CN521Z0013599T	Magnet holder	S403	1	
61	FF1-CN521Z00000460	Magnet	Magnet	3	
60	FF1-CN521Z0013899T	Plate	S403	1	
NO.	Part No.	Description	Material	QTY	Remark

DESIGNED

CHECKED

APPROVED

SCALE

2:5

MATERIAL

WEIGHT

[ . 0 ]

TITLE

REF

EasySET Exposed Bath & Shower Auto Temperature Mixer with Shower Kit

DWG NO.

FFAS4954-601500BC0

American Standard



add part FF1-CN521N0007599S  
lock nut, 2 pcs

REV

DESCRIPTION

DATE

NAME