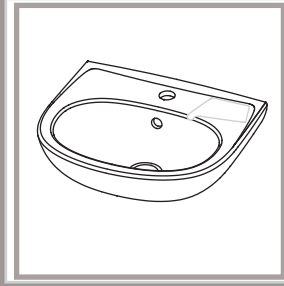


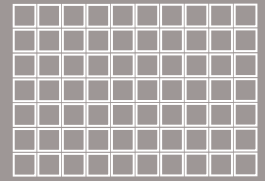
# 新科德

## 圆形挂盆/半柱盆/柱盆 安装说明书

CCAS1530  
CCAS0530  
CCAS0531  
CCAS0532



American Standard



感谢阁下选用我们的产品……我们的产品多年来一直是优良质量的标志。为了有助于安装顺利进行，请您在开始安装之前仔细阅读这些指南，也请查阅推荐的工具和材料表；小心打开您的新产品。

**▲警告：易碎产品。小心轻放以避免产品破碎和人身伤害。**

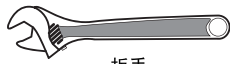
注意：图片可能与真实产品不符（请以实物为准）。

所有的安装程序必须严格遵从当地的卫浴和建筑法规条例。

### 推荐的工具和材料



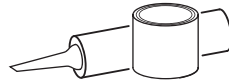
油腻刀



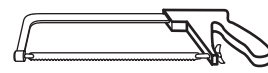
扳手



水平仪



矽胶



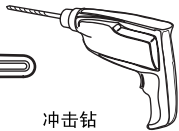
手锯



卷尺



可调扳手



冲击钻



鲤鱼钳



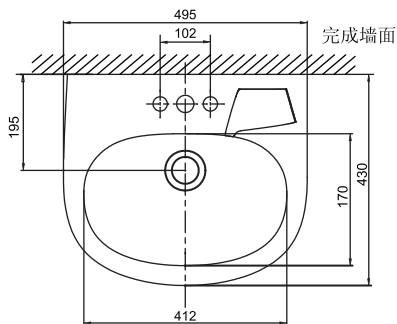
十字型螺丝起子



一字型螺丝起子

### 基本尺寸

每种面盆都提供了尺寸图。注意：该尺寸图仅供参考，产品具体尺寸可能在公差范围内有所变化，尺寸单位为毫米。



- Fig.1 为半柱盆1安装尺寸图 (CP- 7532)
- Fig.2 为半柱盆2安装尺寸图 (CP- 7531)
- Fig.3 为柱盆安装尺寸图 (CP- 7530)

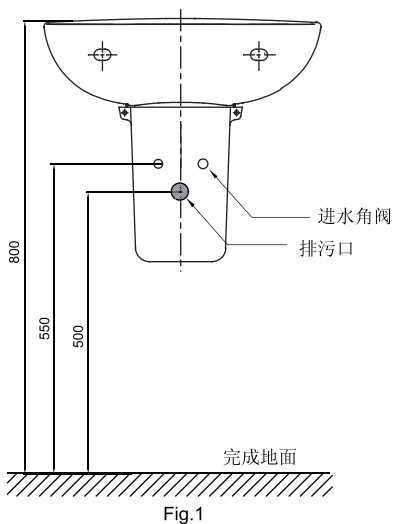


Fig.1

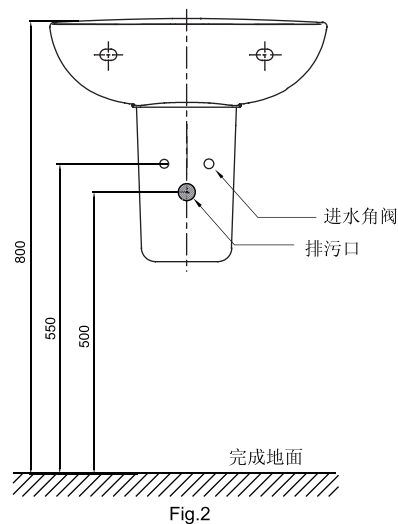


Fig.2

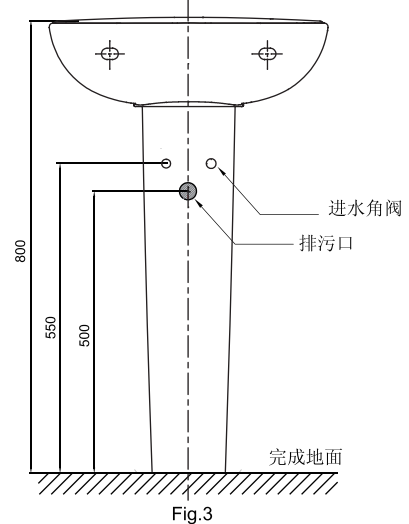
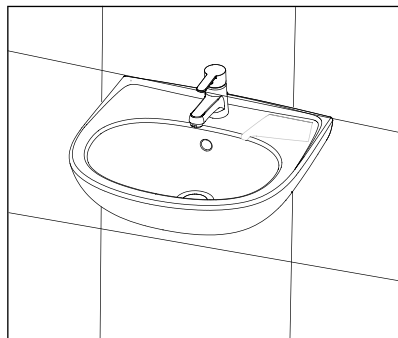


Fig.3

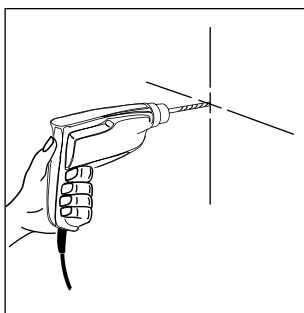
# 一、挂盆的安装

## 1 挂盆的安装准备

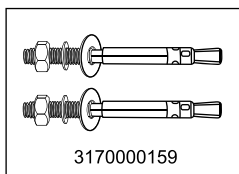
将面盆放到安装位置，通过面盆的安装孔，标注螺丝固定位置。



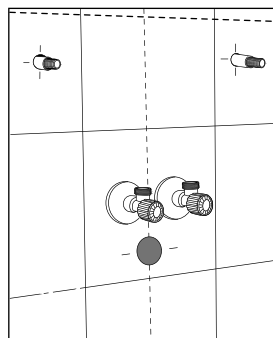
## 2 用冲击钻打孔



从安装位置上移去面盆,给面盆固定螺丝(3170000159)钻好导孔。

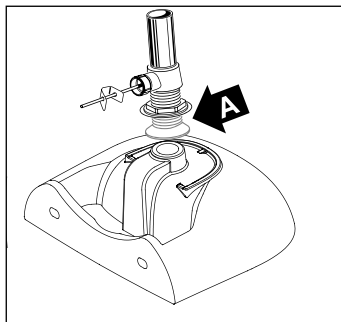


## 3 安装进水阀

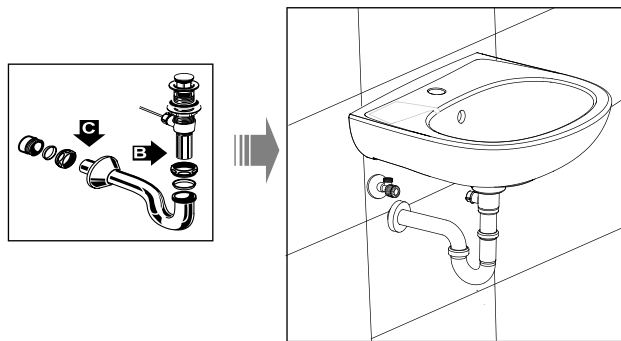


安装供水角阀，预埋膨胀螺栓。

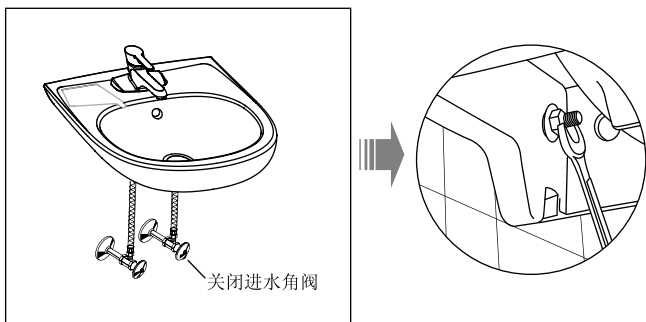
4 遵循厂家指示，安装水龙头和排水组件（不含在包装内）。为了保证密封，在排水沟下（A部件）抹些灰泥，并在排水沟安装好后把多余的灰泥清理干净。



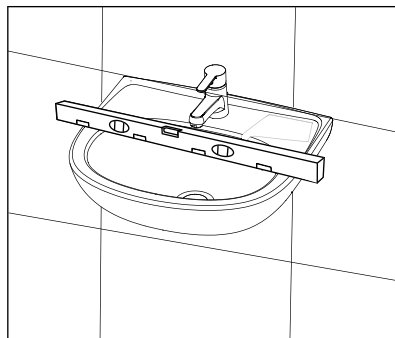
5 将装配好的洗脸盆放回安装位置，将存水弯管连接到排水组件上，用手拧紧并检查校准。有时可能需要割除部分尾管（B区）或存水弯管（C区）。



6 把洗脸盆固定在墙上，安装垫片和螺母及挂钩。调整部件水平并摆正。将冷、热供水管道连接到脸盆进水角阀上，紧固水密组件的存水弯管接头。

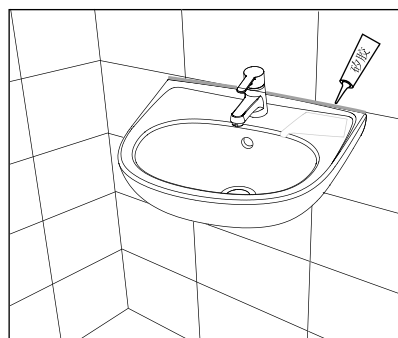


7 安装完成后用水平仪测量水平。



8

打开供水角阀，检查是否漏水，如果确定没有漏水则可进行下一安装步骤，在面盆边缘涂上矽胶。  
(矽胶不属提供范围)



## 二、半柱盆的安装

1

### 半柱盆的安装准备

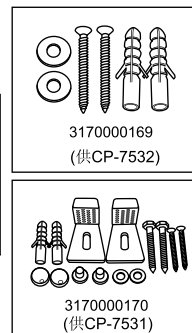
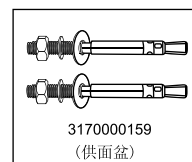
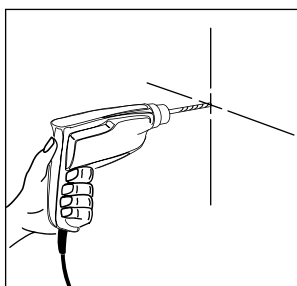
将面盆和半立柱放到安装位置，通过面盆和柱脚的安装孔，标注螺丝固定位置。



2

### 用冲击钻打孔

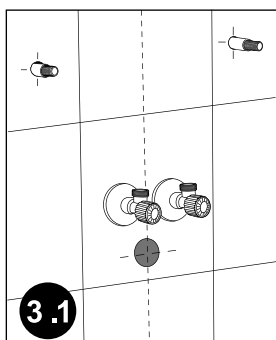
从安装位置上移去面盆和柱脚，给面盆固定螺丝(3170000159)和L型支架(立柱1: 3170000170)或柱脚固定螺丝(立柱2: 3170000169)钻好导孔。



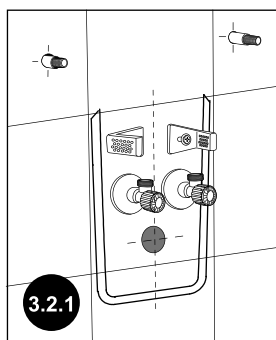
3

### 安装进水阀

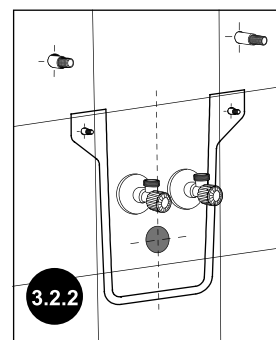
3.1 安装供水角阀，预埋膨胀螺栓。



3.2.1 安装L型支架(CP-7531)

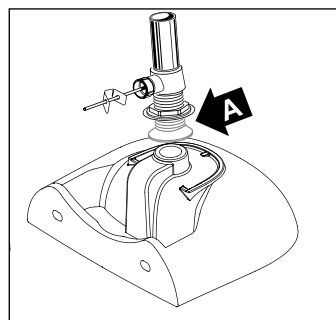


3.2.2 预埋柱脚膨胀螺栓(CP-7532)

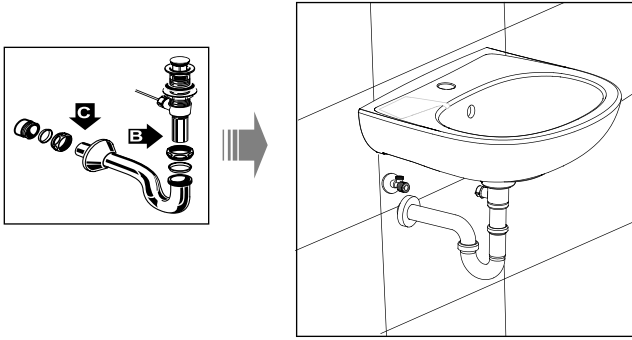


4

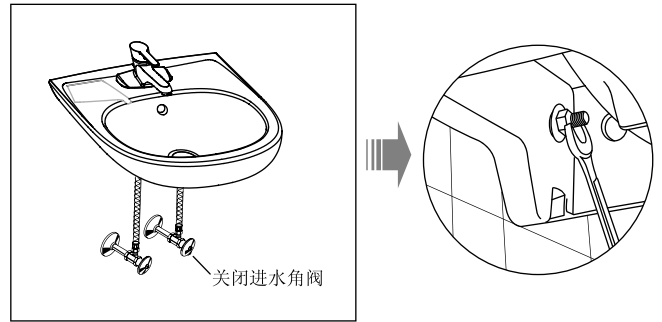
遵循厂家指示，安装水龙头和排水组件（不含在包装内）。为了保证密封，在排水沟下（A部件）抹些灰泥，并在排水沟安装好后把多余的灰泥清理干净。



**5** 将装配好的洗脸盆和柱脚放回到安装位置。将存水弯管连接到排水组件上，用手拧紧并检查校准。有时可能需要割除部分尾管（B区）或存水弯管（C区）。



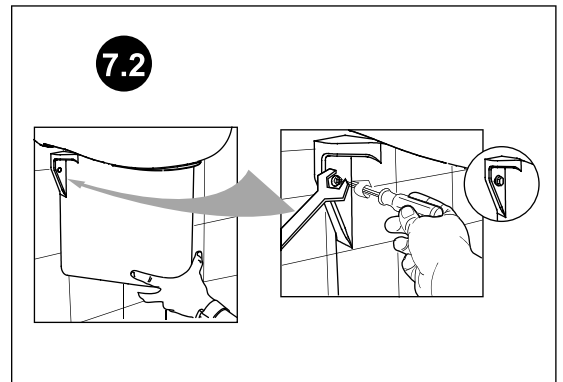
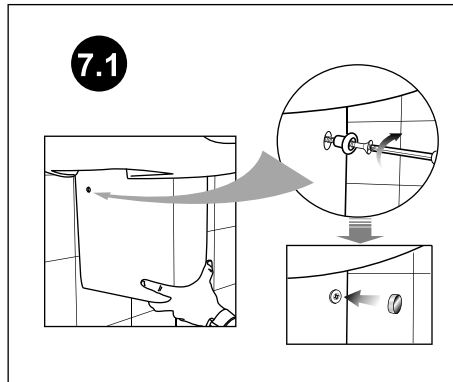
**6** 把洗脸盆固定在墙上，安装垫片和螺母及挂钩。调整部件水平并摆正。将冷、热供水管道连接到脸盆进水角阀上，紧固水密组件的存水弯管接头。



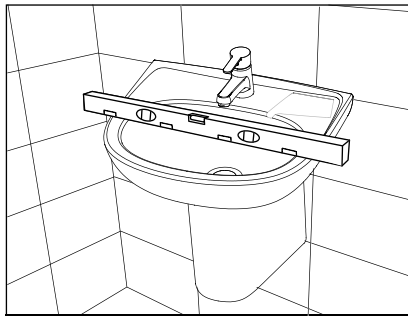
**7** **安装盆柱**

在洗脸盆的下方安装半立柱，半立柱的上缘要紧贴洗脸盆的下缘，然后按照图示安装好螺丝。

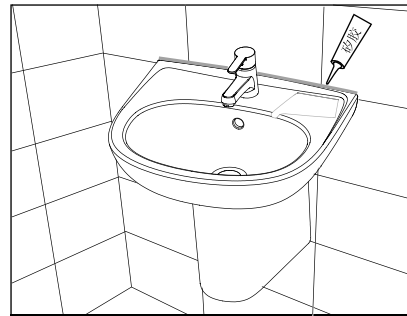
注：图7.1为CP-7531的安装图  
图7.2为CP-7532的安装图



**8** 安装完成后用水平仪测量水平。

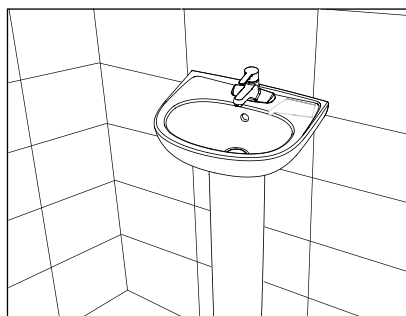


**9** 打开供水角阀，检查是否漏水，如果确定没有漏水，则可进行下一安装步骤，在面盆边缘涂上矽胶。（矽胶不属提供范围）



### 三、立柱盆的安装

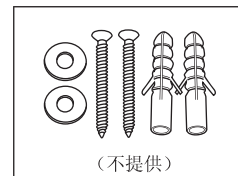
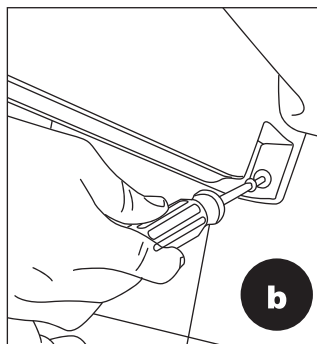
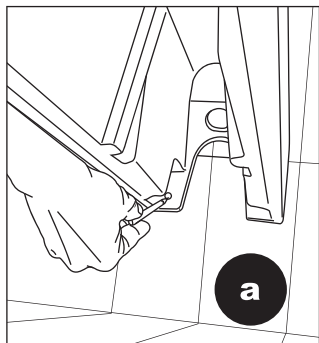
**1** 把洗脸盆和立柱放到安装位置，通过洗脸盆和柱脚的安裝孔，标注螺丝的固定位置。



**2** 柱盆安装准备，水龙头的安装请参照半柱盆的安装步骤2、3.1、4、5、6。

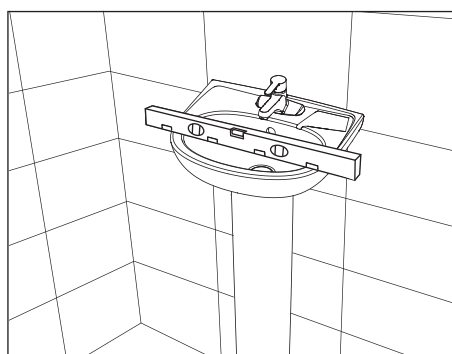
3

安装柱脚固定螺栓。



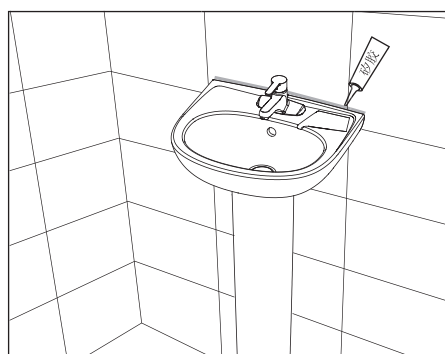
4

安装完成后用水平仪测量水平。



5

打开供水角阀，检查是否漏水，如果确定没有漏水，则可进行下一安装步骤，在面盆边缘涂上矽胶。（矽胶不属提供范围）



### 维护和保养

不要用粗糙的研磨剂和腐蚀性的清洗器清洁配件表面。用温和的清洁剂，温和的水和一张软布就可以将配件和产品表面的一般污渍和肥皂聚积物清除干净。在清洗之后用柔软的干布将产品表面擦干使之恢复原有的光泽。

### 关于质保：

为保障您的合法权益，请您联系购买商家或经销商索取电子质保卡，或微信关注“美标品质服务”公众号，通过“我的美标”→“质保信息”→“验证身份”后，在线申请电子质保卡。

若有任何疑问，可联络离您最近的美标公司售后服务中心，或拨打美标全国免费电话进行咨询。

全国免费电话：400-820-3191（固话用户/手机用户）

800-820-3191（固话用户）

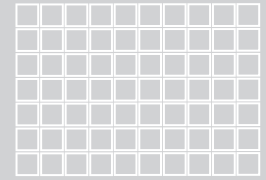
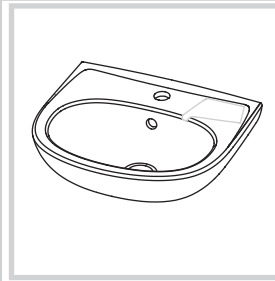
美标官方售后微信账号：美标品质服务

(Only for China Market)  
(仅限中国市场)



# NEW CODIE CCAS1530/CCAS0530 CCAS0531/CCAS0532

*American Standard*



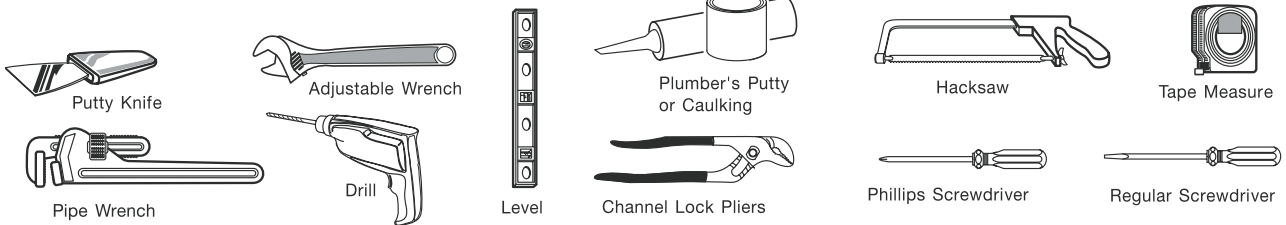
## Round wall-hung/semi-ped/ped lava

### Installation Manual

Thank you for selecting our products...products which have been the benchmarks of fine quality for years. To help ensure that the installation process will proceed smoothly, please read these instructions carefully before you begin. Also, review the recommended tools and materials list; carefully unpack and examine your new plumbing fixture.

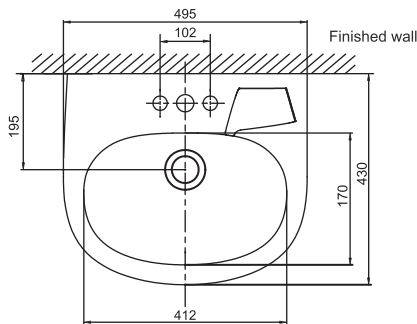
**ALL INSTALLATION PROCEDURES MUST COMPLY IN STRICT ACCORDANCE WITH APPLICABLE LOCAL PLUMBING AND BUILDING CODES**

#### RECOMMENDED TOOLS AND MATERIALS



#### ROUGHING-IN DIMENSIONS

Unit: mm



Dimensioning diagrams are provided for each model. Note: dimensions are nominal and may vary within the range of manufacturing tolerances.

- Fig.1 for installing with semi-pedestal 1(CP-7532)
- Fig.2 for installing with semi-pedestal 2(CP-7531)
- Fig.3 for installing with full-pedestal(CP-7530)

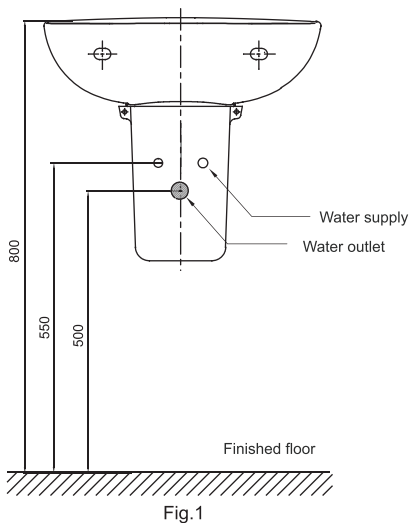


Fig.1

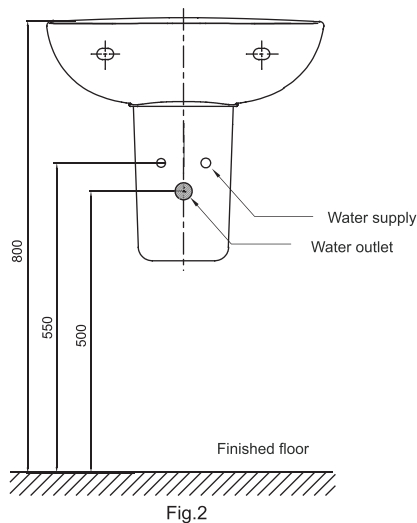


Fig.2

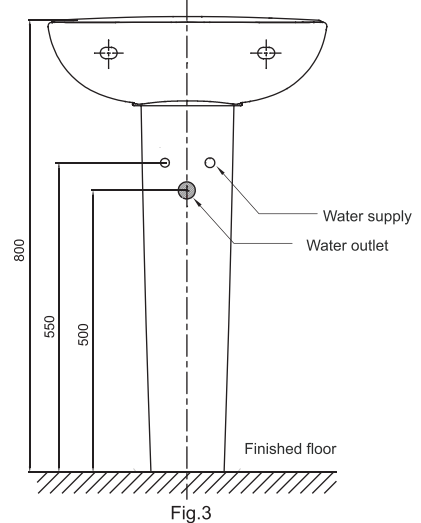
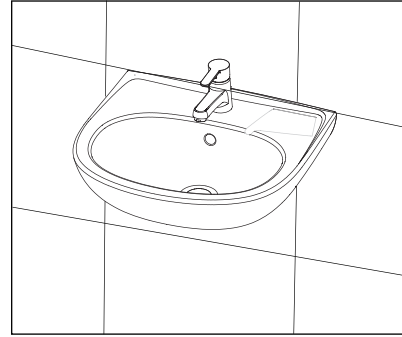


Fig.3

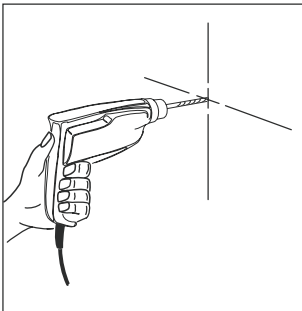
# A. Installing of wall hung lava

## 1 Preparation for wall hung lava installation

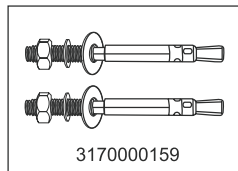
Place the lava on the installing position, mark lava screw locations through the mounting holes.



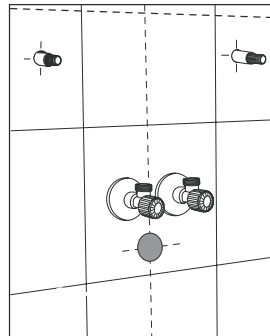
## 2 Punching



Remove lavatory from installed position. Drill pilot holes for expansion bolts(3170000159).

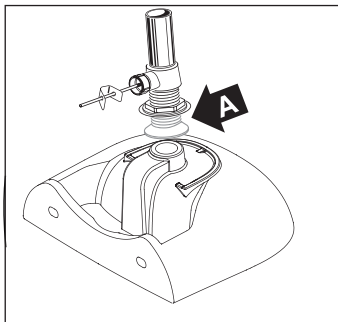


## 3 Install the stop valve

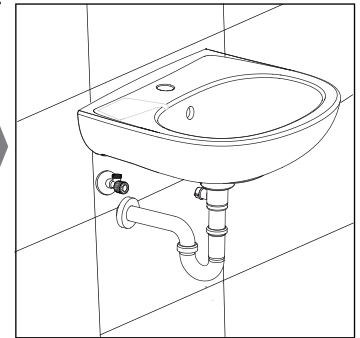
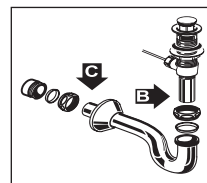


Install the inlet valve.

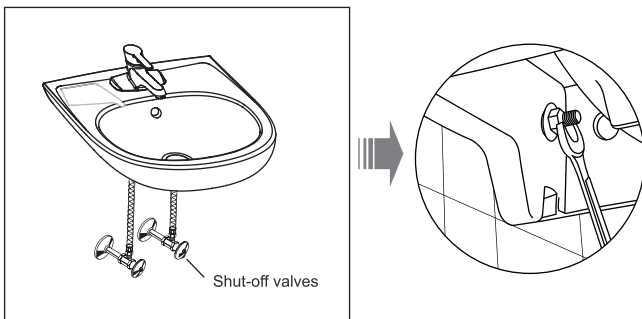
4 Following manufacturer's instructions, install faucet and drain assembly(not included). Be certain to apply a bead of sealing putty on the underside of the drain(area "A") in order to ensure a watertight seal between the lava and drain. Remove excess putty after installing drain.



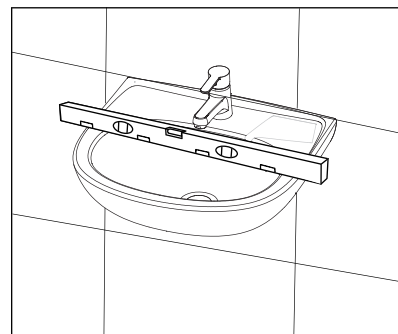
5 Return the fitted lavatory to the installed position. Connect trap to drain assembly, hand tight to check alignment. It may be necessary to cut off part of the tailpiece(area "B") or part of the horizontal leg of the trap(area "C").



6 Fix lavatory to wall as shown, install washers and hand tighten nuts or lag bolts. Level and square the unit. Connect hot and cold supply lines to the shut-off valves. Tighten trap joints for watertight assembly.

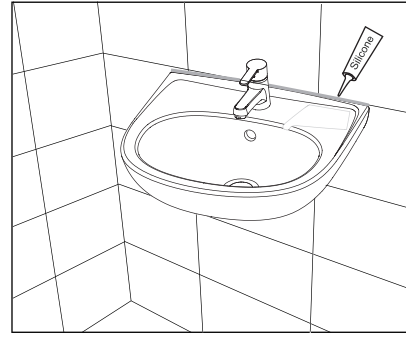


7 Check the level after installation.



8

Open the water supply valve to check the assembly for any leak, if no leak was found, apply silicone sealant around the lavatory. (Silicone not included in the packaging)

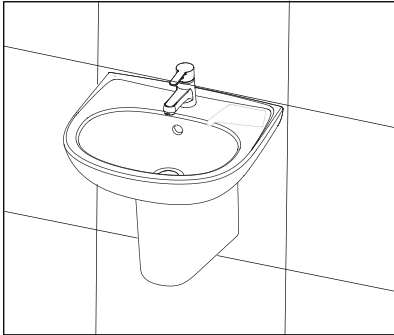


## B. Installing of semi-pedestal lava

1

### Preparation for semi-ped lava installation

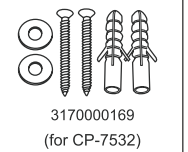
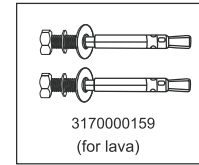
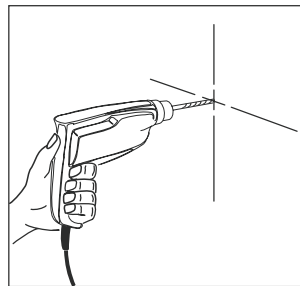
Place the lava and semi-ped on the installing position, mark lava and semi-ped screw locations through the mounting holes.



2

### Punching

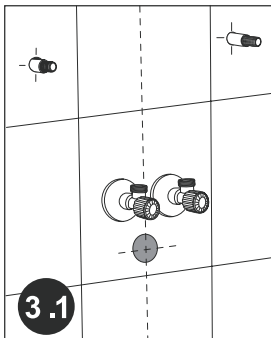
Remove lavatory from installed position. Drill pilot holes for lava and semi-pedestal anchor bolts or lag bolts. Note: When install the semi-ped lava, use a drill of  $\Phi 10\text{mm}$  to punching the mounting hole for installing L-shape bracket.



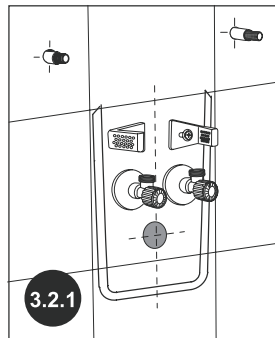
3

### Install the stop valve

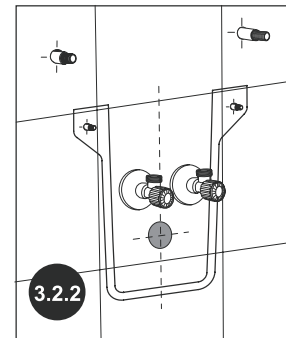
3.1 Install the inlet valve.



3.2.1 Install the "L" shape bracket (for CP-7531)

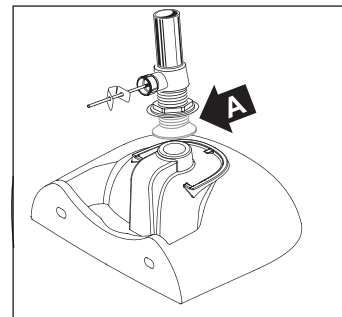


3.2.2 Install the expansion bolts (for CP-7532)

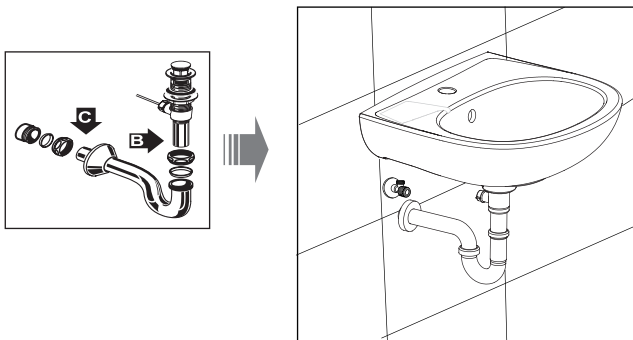


4

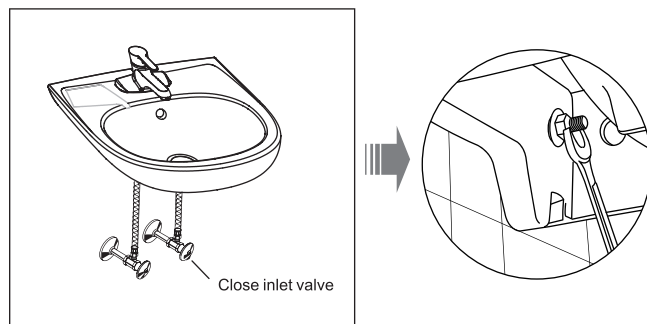
Following manufacturer's instructions, install faucet and drain assembly (not included). Be certain to apply a bead of sealing putty on the underside of the drain (area "A") in order to ensure a watertight seal between the lava and drain. Remove excess putty after installing drain.



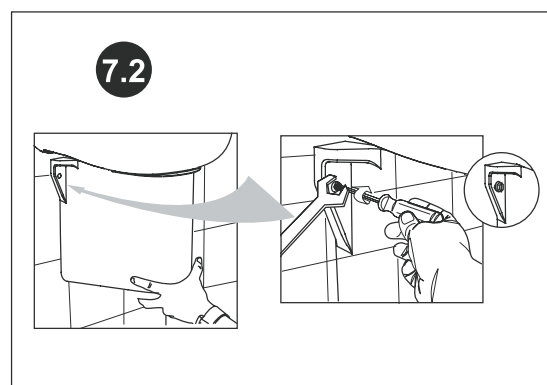
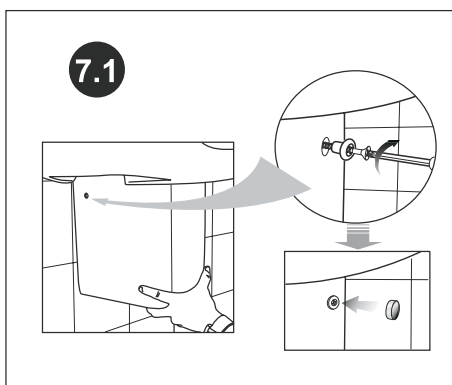
**5** Return the fitted lavatory to the installed position. Connect trap to drain assembly hand tight to check alignment. It may be necessary to cut off part of the tailpiece (area "B") or part of the horizontal leg of the trap (area "C").



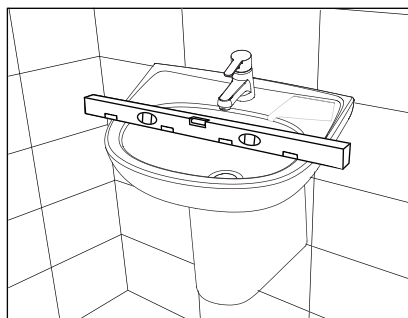
**6** Fix lavatory to wall as shown, install washers and hand tighten nuts or lag bolts. Level and square the unit. Connect hot and cold supply lines to the shut-off valves. Tighten trap joints for watertight assembly.



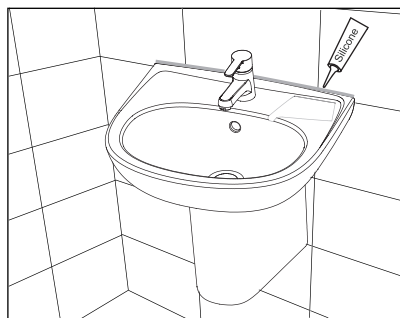
**7**  
Install semi-ped under the lava. The top rim of semi-ped attach under of lava. Fix the bolts by using the screw as picture shown.  
Pic.7.1 Installation of CP-7531.  
Pic.7.2 Installation of CP-7532.



**8**  
Check the level after installation.

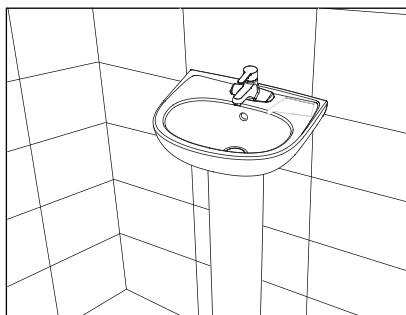


**9** Open the water supply valve to check the assembly for any leak, if no leak was found, apply silicone sealant around the lavatory. (Silicone not included in the packaging).



## C. Installing of full-pedestal lava

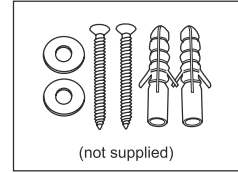
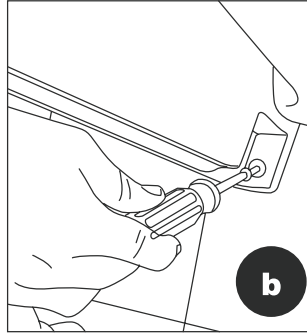
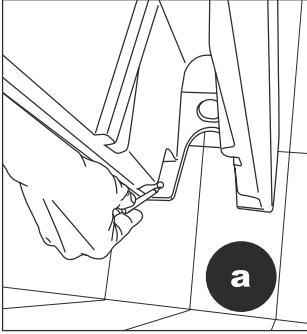
**1**  
Place the lava and pedestal on the installing position, mark lava and pedestal screw locations through the mounting holes.



**2**  
Please refer to 2,3,1,4,5,6 of semi-ped lava installation to install the lavatory and faucet.

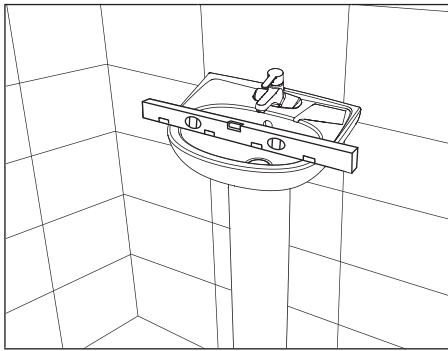
3

Install pedestal screws.



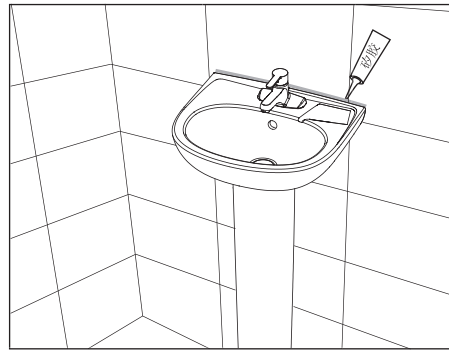
4

Check the level after installation.



5

Open the water supply valve to check the assembly for any leak, if no leak was found, apply silicone sealant around the lavatory (Silicone not included in the packaging).



**CARE AND MAINTENANCE**

Do not use harsh abrasives or caustic cleaners to clean fixture surface. A mild detergent, warm water, and a soft cloth will remove normal dirt and soap accumulations from fittings and surfaces. Rinse thoroughly after cleaning and polish with a soft dry cloth to restore original luster of material.

**Warranty:**

Subject to local warranty terms.

Visit [americanstandard-apac.com](http://americanstandard-apac.com) or contact your local American Standard representative for specific warranty information.