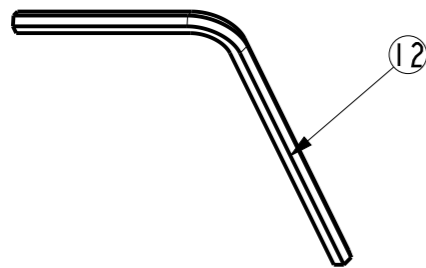
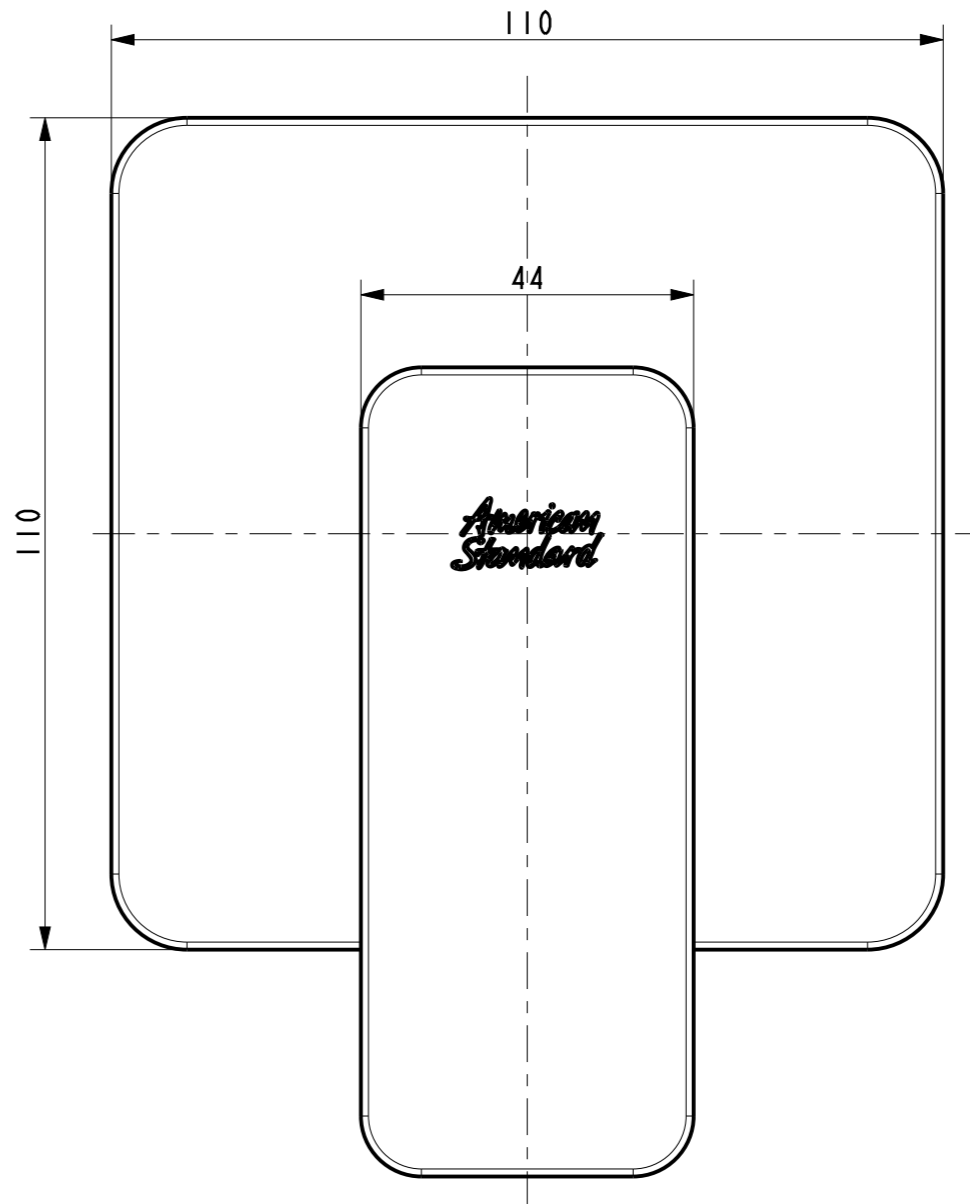
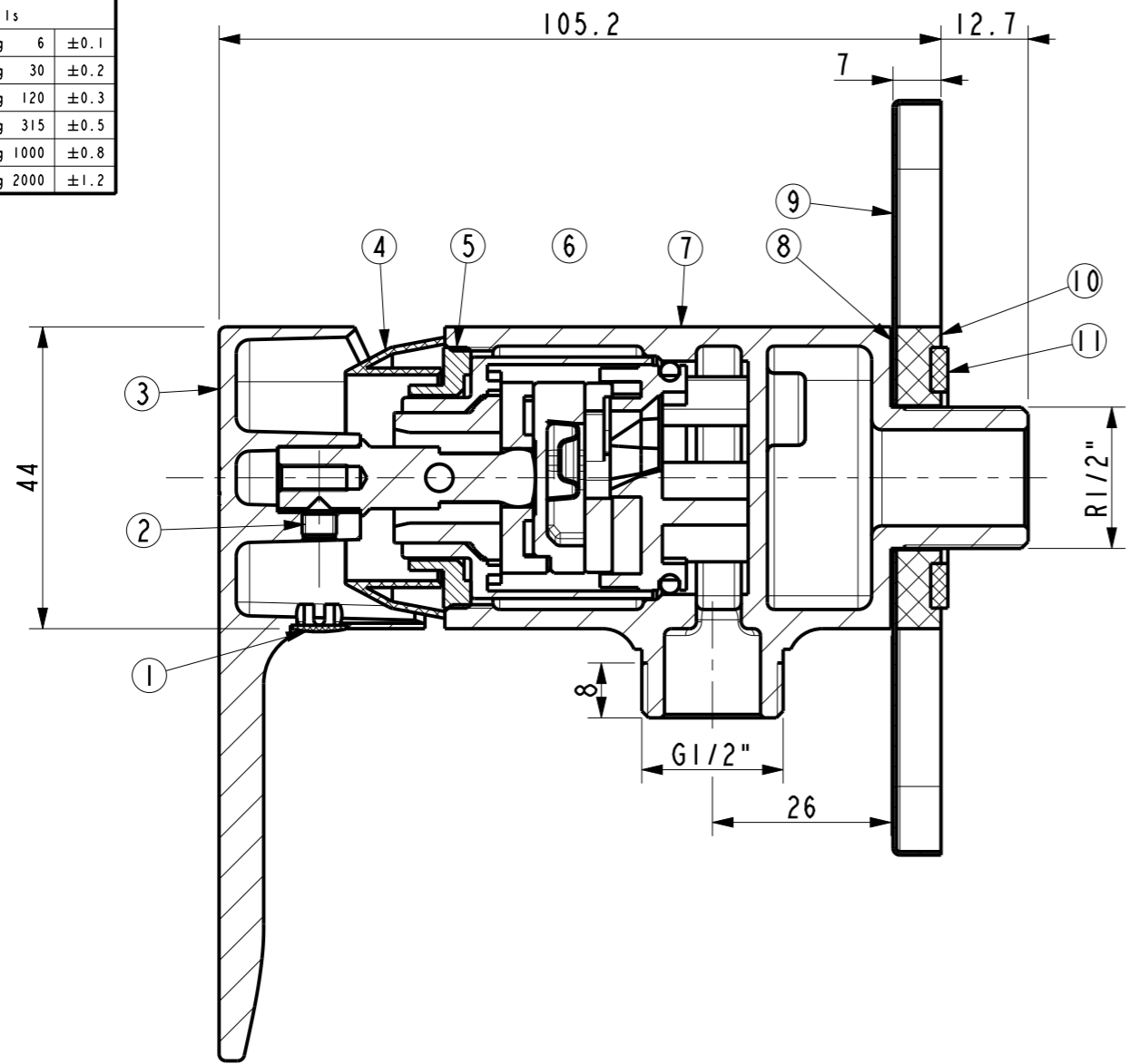


Tolerance, Unless Otherwise Stated, Is				
Above	0.5 to and including	6	±0.1	
Excess	6 to and including	30	±0.2	
Excess	30 to and including	120	±0.3	
Excess	120 to and including	315	±0.5	
Excess	315 to and including	1000	±0.8	
Excess	1000 to and including	2000	±1.2	



12	FF1-CN521Z00000254	In-Hex Wrench	1	Q235	
11	FF1-CN521G00000033	Flat Washer 38* 25*2.5	1	NBR	
10	FF1-CN521G000000202	Washer(PA66)	1	PA66	
9	FF1-CN521F00000127	Cover For Ventuno shower	1	H62	Cr
8	FF1-CN521G000000203	Washer(Clarity)	1	PVC	
7	FFZZ0021-0002850PL	Body	1	GkMs60Fk	Cr
6	FF1-CN521C00000041	Cartridge(N35HW)	1	Assembly	
5	FF1-CN521N00000096	Lock Nut	1	HPb59-1	
4	FF1-CN521F00000034	Cartridge Cover	1	ABS	Cr
3	FF1-CN521L00000199	Handle	1	ZZnAl4-1	Cr
2	FF1-CN521N000000228	Screw M5*6	1	SUS 304	
1	FF1-CN521Z000004950	Plug for handle	1	ABS	Cr
NO.	PART NO.	PART NAME	QTY	MATERIAL	FINISH

DESIGNED			TITLE		
CHECKED			REF		
APPROVED			Acacia E Exposed Shower Mono		
SCALE	MATERIAL	WEIGHT	DWG NO.		
1:1	Assembly		FFAS1326-701500BF0		

REV	DESCRIPTION	DATE	NAME

**American Standard**