



制作说明：

- 1、说明书完成尺寸：49*70mm
- 2、材料：80克的白色纸
- 3、A5双面印制并折叠完成（详看图示）
- 4、印刷颜色：灰度
- 5、印刷时，内容准确、清晰、墨色均匀、表面清洁。

				DESIGN	黄卓桓	2021.05.18	TITLE	Instructions	
				CHECKED		2021.05.18	REF	小精灵花洒说明书（亚黑色）	
				APPROVED		2021.5.18.			
				SCALE	MATERIAL	WEIGHT	DWG NO.	American Standard	
REV	DESCRIPTION	DATE	NAME				FF1-CN521K00456799		

FFASS505-000610BT0
Black Genie Hand shower

FFASS506-000610BT0
Black Genie Hand shower
With hose-holder

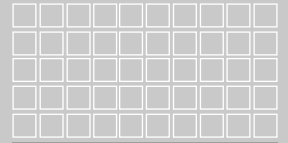


FFASS505-000610BT0



FFASS506-000610BT0

American Standard



**Installation &
 Operation Instructions**

Thank you for selecting American Standard the benchmark of fine quality for over 100 years.
To ensure that your installation proceeds smoothly, please read these instructions carefully before you begin.

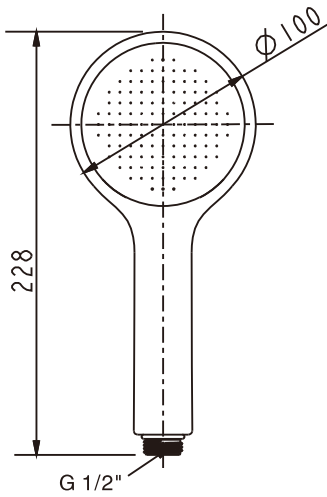
* American Standard continually improves our product design and performance and reserves the right to modify the dimension and specification of our products accordingly without any prior notification.

Dimension

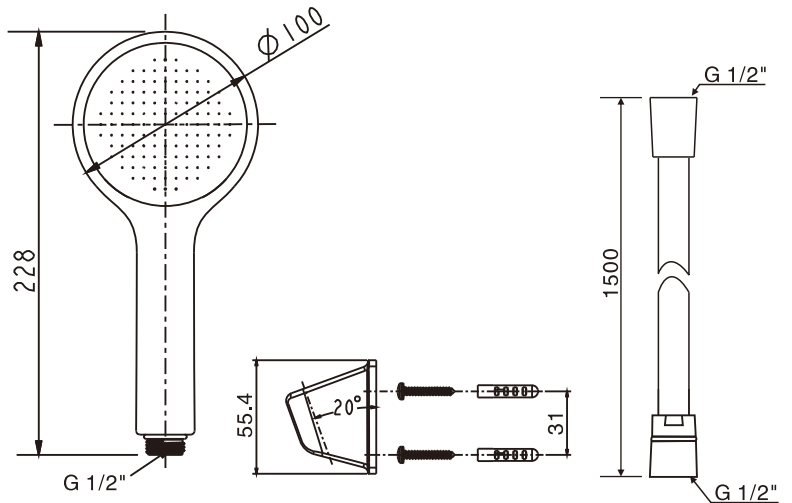
2021年5月28日
 A/O

Unit: mm

FFASS505-000610BT0

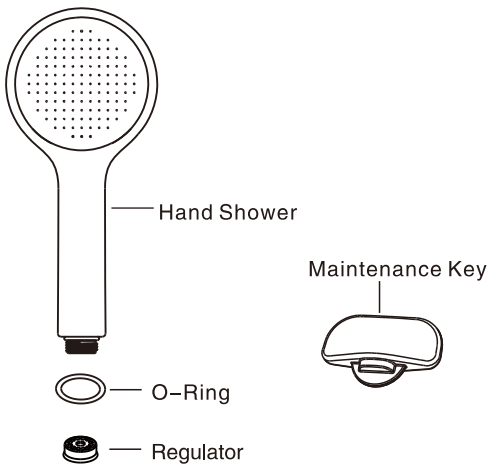


FFASS506-000610BT0

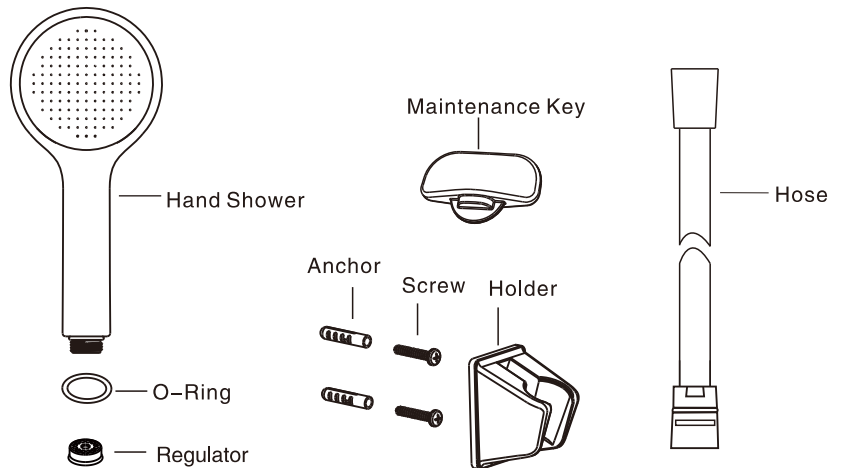


Parts List

FFASS505-000610BT0

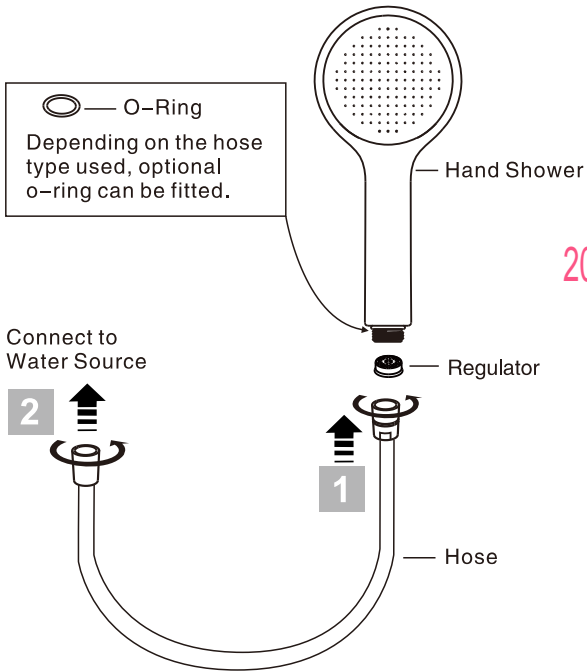
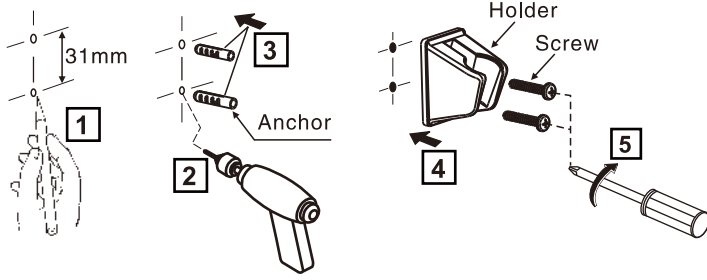


FFASS506-000610BT0



Installation

FFASS506-000XXXBT0 / BF0



2021年5月28日
A/O

Care & Maintenance

Preparation

- * Wash and clean the water supply pipeline.
- * Check installation instructions to ensure correct installation.

Conditions for use

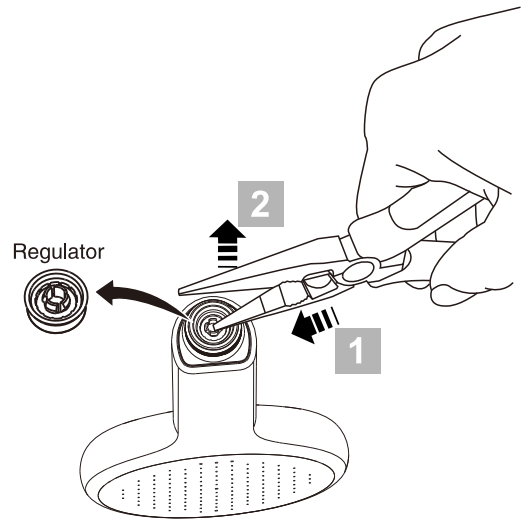
- * Water pressure condition: 0.05-0.5MPa
- * Recommended maximum water temperature: 60°C
- * Not for use as a steam outlet.

Cleaning the surface

- * Do not use abrasive cleaners or solvents on the product.
- * To avoid scratching the surface, do not use abrasive materials such as scouring pad.
- * Wrap a thick cloth around the product to prevent scratching or other damages during installation.

Extreme Low Pressure Configuration

- * Should you experience extremely low water pressure (<0.1MPa) or prefer a stronger water pressure during your shower, you may gently remove the regulator as per instructions below.



Customer Care Support

Australia
customercare@reece.com.au
 1800 080 055

China
 800-820-3191 (Phone)
 400-820-3191 (Mobile)

Hong Kong
info@grohe.hk
 +852-2969-7067

India
 1800-102-8372

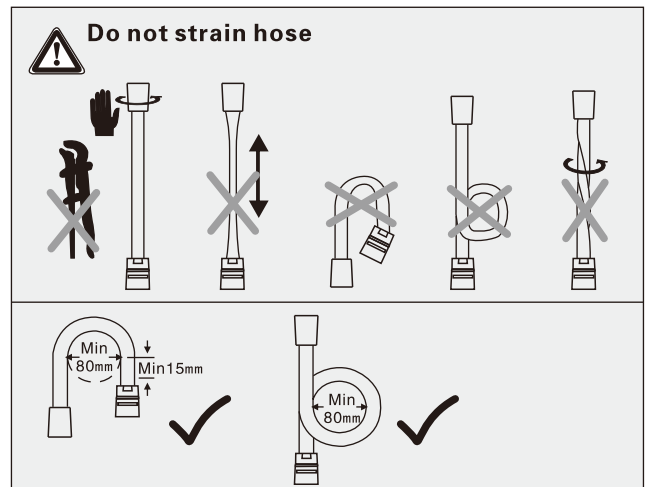
Indonesia
CustomerCare-Indonesia@Lixil.com
 0-800-1-267823 (Toll Free)

New Zealand
sales@robertson.co.nz
 +64-9-5730490

Philippines
customerserviceph@lixil.com
 +63-2-893-3113 local 506

Thailand
 +66-2-102-2222

Vietnam
customercareavn@amstd.com
 1900-545460



Attention:
 Please leave manual with customer
 post installation.