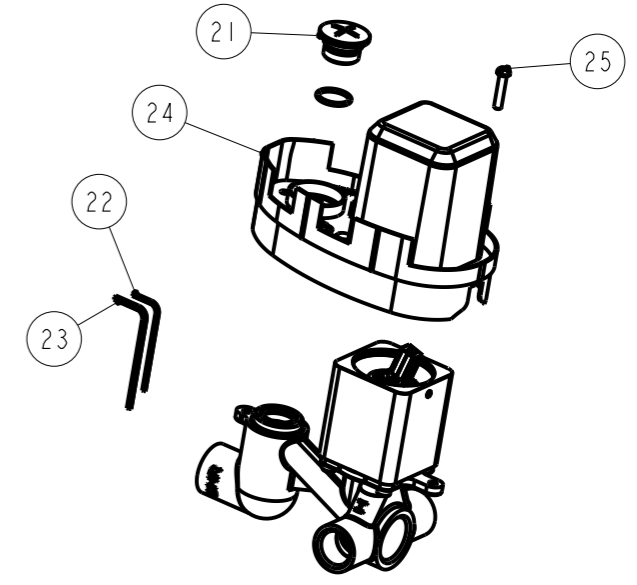
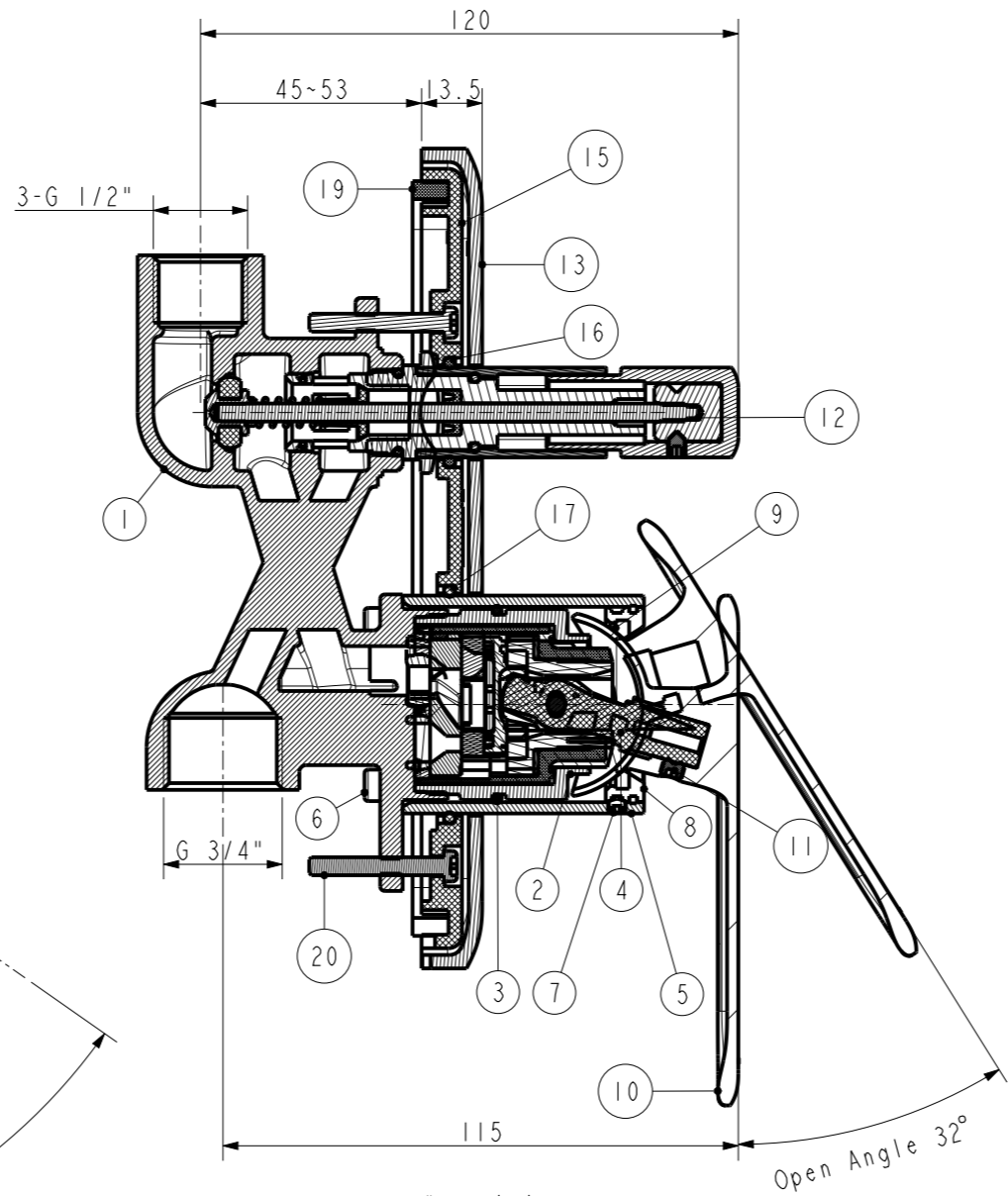
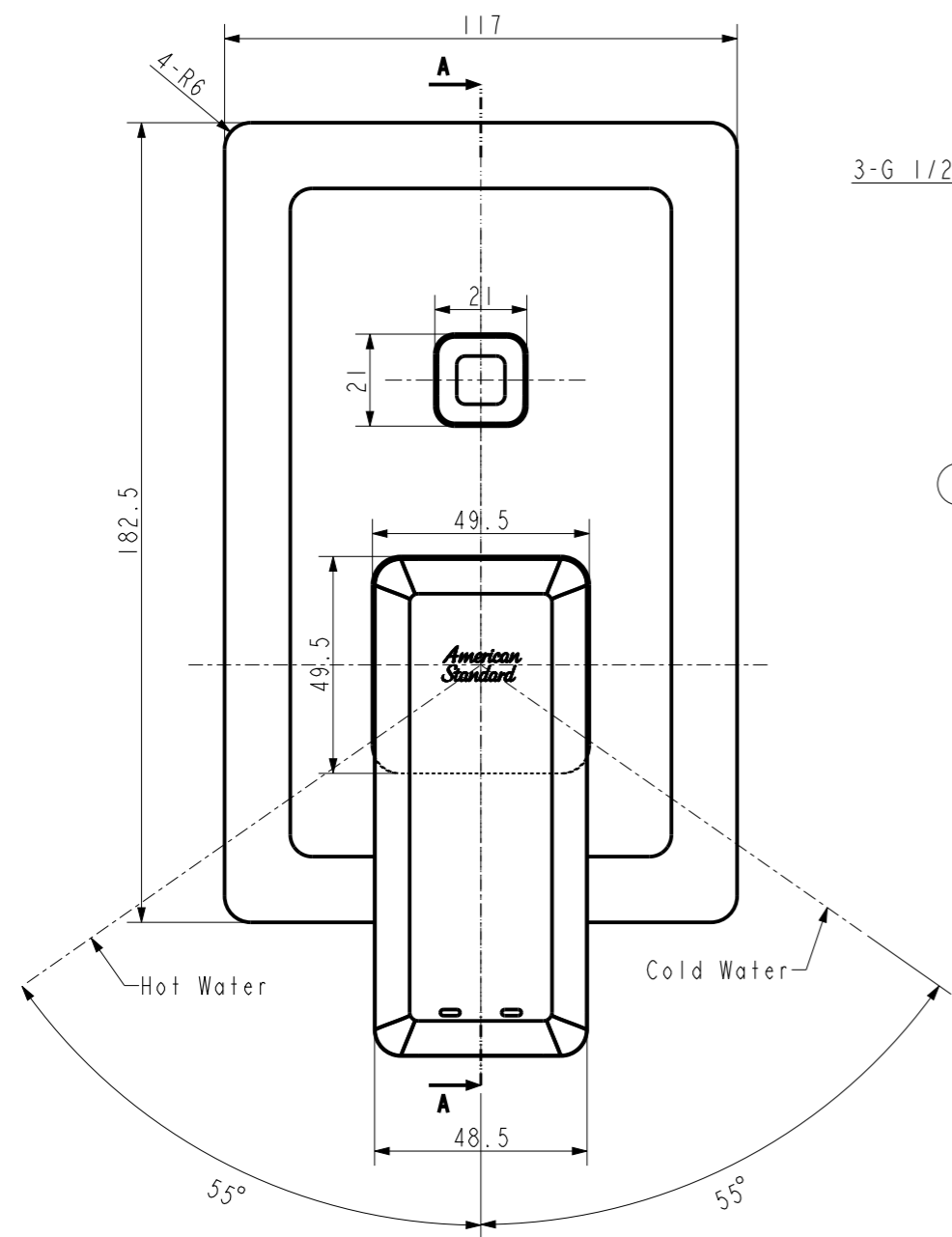


2025年6月23日  
A/O

Tolerance, Unless Otherwise Stated, Is			
Above	0.5 to and including	6	±0.1
Excess	6 to and including	30	±0.2
Excess	30 to and including	120	±0.3
Excess	120 to and including	315	±0.5
Excess	315 to and including	1000	±0.8
Excess	1000 to and including	2000	±1.2



No.	Part No.	Part Name (EN)	Part Name (CN)	QTY	Material	Finished
25	FF1-CN521N00000268	Screw (M4X20)	158K618253(螺钉)(M4X20)	1	SUS304	
24	4275779990	Protect Cover for Acacia SS Concealed B&S Mixer	新阿卡西亚舒薄丽入墙浴缸控制阀保护套	1	PP	
23	FF1-CN521Z00000254	In-Hex Wrench for H01 Mixer	1582361599(H01入墙式水龙头内六角扳手)	1	Q235	Black
22	FF1-CN521Z00000253	Plug for Acacia SS Concealed BnS Divert	1582361499(六角扳手(对边2.0))	1	Q235	Black
21	426669ER00	Plug for Acacia SS Concealed BnS Divert	入墙式切换阀孔堵头	1	HPb59-1	Ni
20	FF1-CN521N00000185	SCREW	1581839699(入墙式水龙头面板固定螺钉)	2	SUS304	
19	FF1-CN521G00000291	1581193599(Foam Washer for Noble In-Wal	新奥入墙面板胶圈(海绵垫)4*8*570mm	1	EVA	
18	FF1-CN521G00000291	O-Ring (7X2) (Water Mark)	158A912789(O环(7X2)(Water Mark))	4	SUS304	
17	4266809990	Bushing Sealing Ring for Acacia SS	新阿卡西亚舒薄丽阀芯密封套	1	NBR	
16	4266749990	Diverter Sealing Ring for Acacia SS	新阿卡西亚舒薄丽切换阀密封套	1	NBR	
15	4266779990	Fixing Plate for Acacia SS BnS	新阿卡西亚舒薄丽入墙浴缸控制阀面板固定板	1	ABS	
14	FF1-CN521J00000214	158180199U(Fix Pin for Universal Conceal	158180199U(入墙面板通用固定销)	4	HPb59-1	
13	4266810000	Escutcheon for Acacia SS BnS	新阿卡西亚舒薄丽入墙浴缸控制阀面板	1	ZZnAl4-1	CP
	FF1-CN521G00000257	O-Ring 15.6*1.78(A912644) (BLATTnCO GMBH)	158A912644(O环15.6*1.78(A912644)(特)(BLATT	2	NBR	
	FF1-CN521G00000347	RUBBER GASKET,N	1581176199(密封圈 15.8*5, 完成品)	1	NBR	
	FF1-CN521Z00000178	Colony-s Diverter S/A Spring	1581601799(切换阀弹簧)	1	STS304	
	FF1-CN521G00000113	O-Ring 13.5*1.5	1581212799(O环 13.5*1.5)	1	NBR	
	FF1-CN521Z00000441	PLASTIC BUSHING,N	158232849(定位套 11*11, 完成品)	1	POM	
	FF1-CN521G00000354	NUTRING,N	1581195599(U型密封圈 11.7*4, 完成品)	1	NBR	
	FF1-CN521G00000268	O-Ring 11.2*2.0	158A912682(O环 (O11.2*2.0))	1	NBR	
	4266600000	Diverter Seat for Acacia SS	新阿卡西亚舒薄丽入墙浴缸控制阀切换阀座	1	HPb59-1	CP
	4266299990	Cylindrical Pin Assembly for Acacia SS B&S Divert	新阿卡西亚舒薄丽入墙浴缸控制阀换向杆组件(换向杆+帽)	1	HPb59-1+SUS304	
	4266870000	Diverter Handle for Acacia SS B&S	新阿卡西亚舒薄丽入墙浴缸控制阀切换阀把手	1	ZZnAl4-1	CP
	FF1-CN521J00000158	1580931999(新奥入墙式切换阀连接套)	1580931999(新奥入墙式切换阀连接套)	1	HPb59-1	Ni
	FF1-CN521N00000699	Screw M4*4	内六角螺钉M4*4	1	SUS304	
	4266820000	Diverter Bushing for Acacia SS	新阿卡西亚舒薄丽入墙浴缸控制阀切换阀套	1	HPb59-1	CP
	4266559990	In-Hex Screw M5*4 (Machine)	内六角沉头圆头固定螺钉M5X4(机加工)	1	SUS304	
11	4266860000	Handle for Acacia SS Concealed B&S Mixer	新阿卡西亚舒薄丽入墙浴缸控制阀把手	1	ZZnAl4-1	CP
10	4266729990	Washer for Acacia SS Concealed B&S Mixer Handle	新阿卡西亚舒薄丽入墙浴缸控制阀把手密封垫	1	TPR	
9	4266280000	Cover for Acacia SS	新阿卡西亚舒薄丽入墙浴缸控制阀阀芯顶盖压盖	1	HPb59-1	CP
8	4277899990	Screw M4x3-130'	六角螺钉M4x3-130'	1	SUS304	
6	FF1-CN521N00000272	158K618333(Screw)(M4X10)	158K618333(螺钉)(M4X10)	4	SUS304	
5	4266710000	Brass Bushing for Acacia SS	新阿卡西亚舒薄丽入墙浴缸控制阀阀芯铜套	1	HPb59-1	CP
4	FF1-CN521C0000499F	G35 cartridge W/O distributor(408556840)	G35平衡阀芯(408556840)	1	Assembly	
3	FF1-CN521G00000166	1581222499(O-Ring) 33*2)	1581222499(O环(33*2))	1	NBR	
2	FF1-CN521N00007399N	Cartridge lock nut for 1721	1721阀芯锁紧螺母	1	HPb59-1	
1	FFZ0021-0027599MC	Body for Signature Concealed B&S Mixer,M	1721入墙式浴缸龙头本体(AA,加工件)	1	GMs60Fk	

Technical requirements 技术要求 :

1. Cartridge tightening torque is 8~10 N.m and the other torque is implemented according to the (W109.1520 assembly torque specification);  
阀芯安装扭力为8~10N.m,其它符合W109.1520要求.
2. O-ring coated lubricating oil DCIII;  
O环需涂油DCIII.
3. The product should meet GB 18145 and W110.0504 Final inspection standard-faucet;  
产品需符合GB18145要求,外观需符合W110.0504要求.

REV	DESCRIPTION	DATE	NAME

DESIGNED	CHECKED	APPROVED	SCALE	MATERIAL	WEIGHT	DWG NO.	TITLE
阮国林	张明	李强	3:5	组件/Assembly		1131280000	Acacia SS Concealed B&S mixer (APAC)
							REF
							新阿卡西亚舒薄丽入墙式浴缸龙头控制阀_镀铬
							DWG NO.
							American Standard