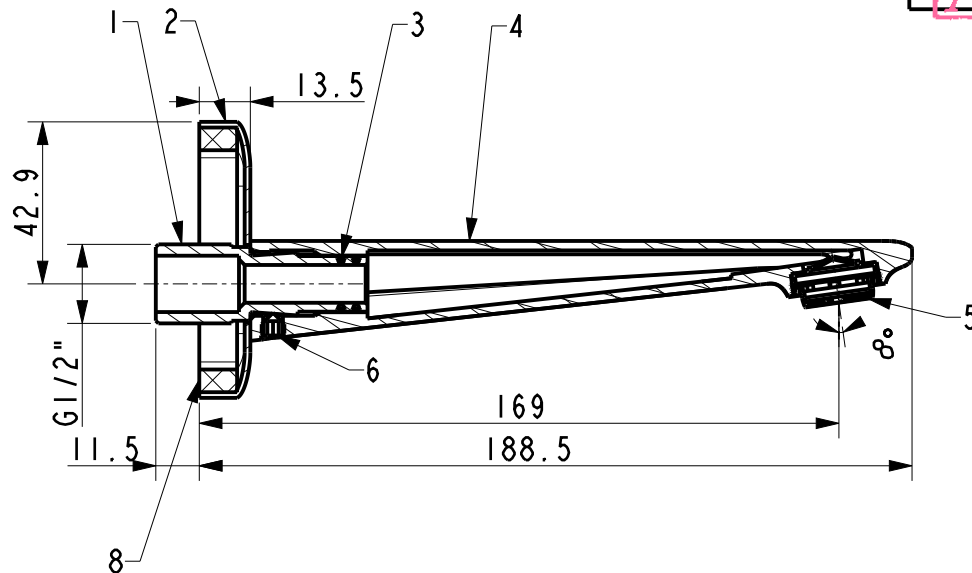
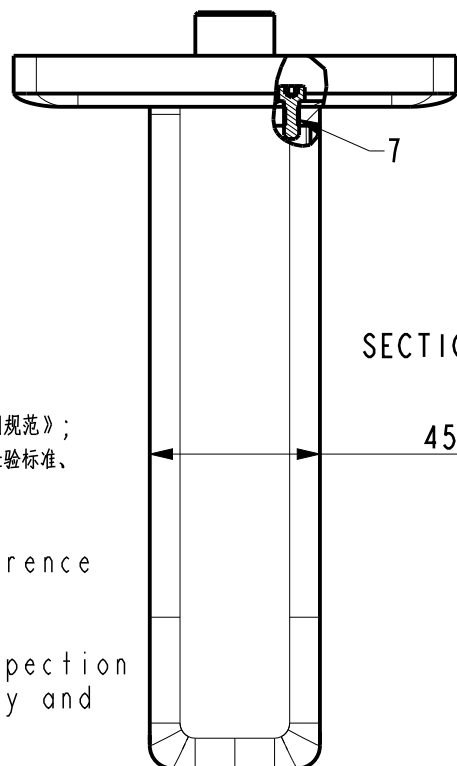
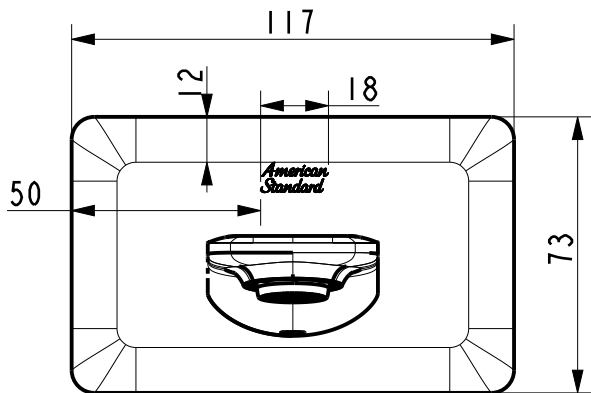


2025年7月24日  
A/O

Tolerance, Unless Otherwise Stated. Is			
Above 0.5 to and including 6	±0.1		
Excess 6 to and including 30	±0.2		
Excess 30 to and including 120	±0.3		
Excess 120 to and including 315	±0.5		
Excess 315 to and including 1000	±0.8		
Excess 1000 to and including 2000	±1.2		



SECTION A-A

技术要求:

1. 螺纹扭矩参照《W109.1520组装扭矩使用规范》;
2. 产品组装后符合UW/W110.0504最终检验标准、GB18145陶瓷片密封水嘴。

Technical requirements:

1. The thread torque reference <W109.1520>;
2. The product meets the UW/W110.0504 final inspection standard after assembly and GB18145

8	FFI-CN521K00000901	胶垫(海绵垫)5.5*10*500mm	海绵	1	黑色
7	FFI-CN521N00000272	螺丝	SUS304	2	本色
6	4267769990	丝顶M6X6	SUS304	1	本色
5	FFI-CN521A00000106	Slim起泡器M24*1	Assembly	1	
4	4267480000	阿卡西亚舒薄丽入墙出水口本体	GkMs60FK	1	镀镍铬
3	FFI-CN521G00000289	O圈	NBR	2	黑色
2	4267890000	阿卡西亚SS入墙出水口装饰盖	ZZnA14-1	1	镀镍铬
1	4211699990	洛文入墙出水口进水接头	Hpb59-1	1	本色
序号	料号	名称	材料	数量	备注

DESIGNED	刘卫群	2025.03.20	TITLE		
CHECKED	张光强	2025.3.20	REF 新阿卡西亚舒薄丽入墙出水口(亚太)		
APPROVED	李海龙	2025.3.20			
SCALE	MATERIAL	WEIGHT	DWG NO.	American Standard	
1:2	Assembly		1136590000		

REV	DESCRIPTION	DATE	NAME