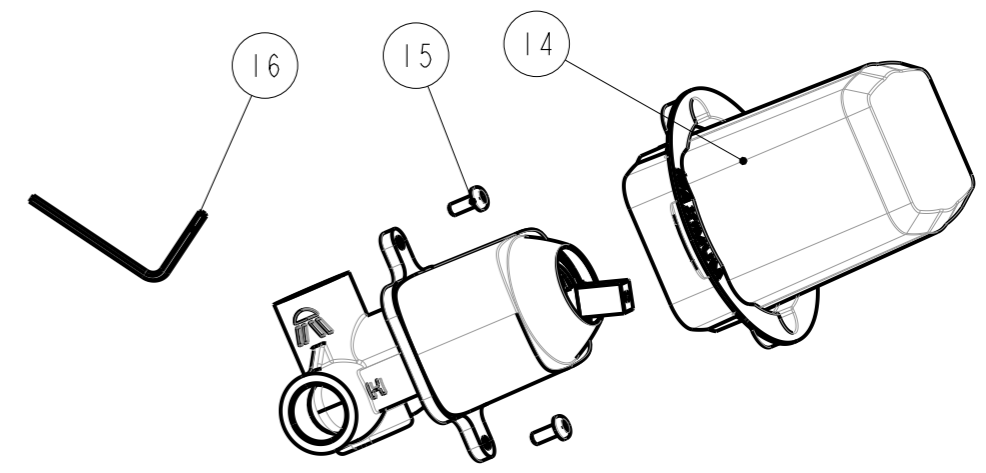
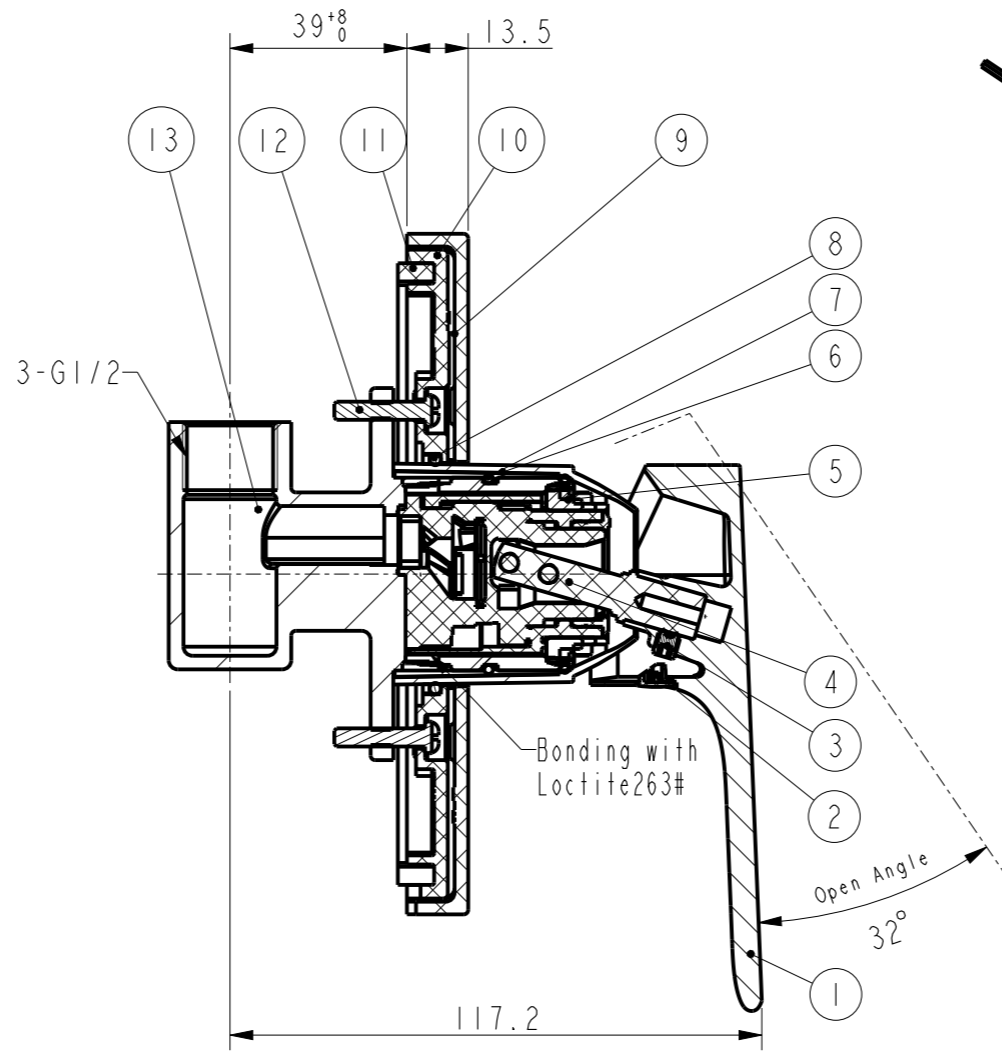
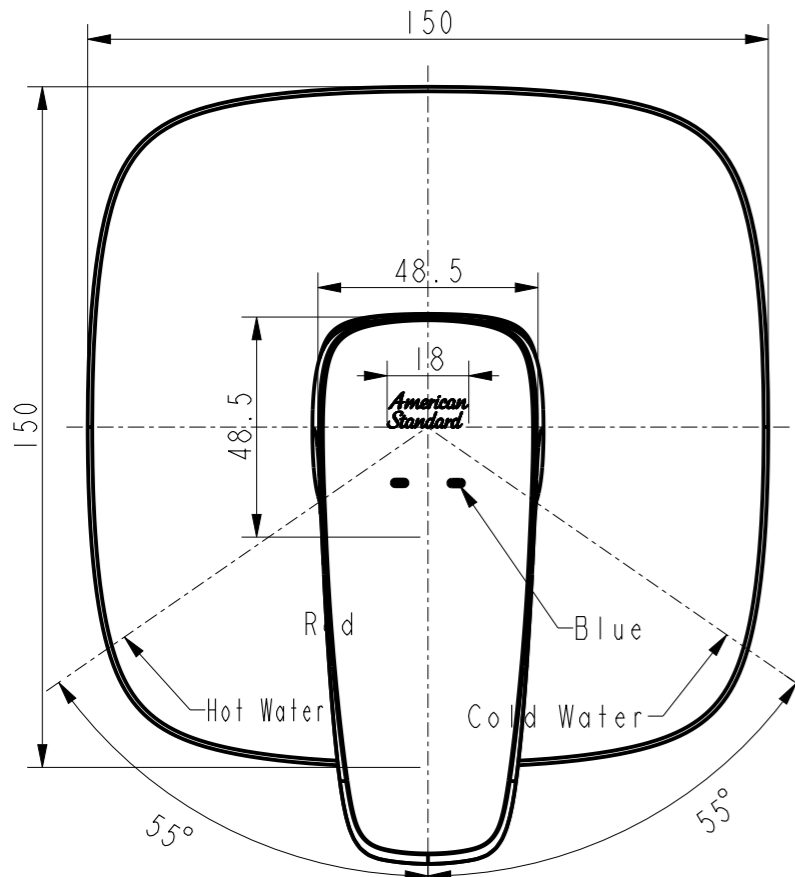


Tolerance, Unless Otherwise Stated, Is			
Above	0.5 to and including	6	±0.1
Excess	6 to and including	30	±0.2
Excess	30 to and including	120	±0.3
Excess	120 to and including	315	±0.5
Excess	315 to and including	1000	±0.8
Excess	1000 to and including	2000	±1.2



16	FF1-CN521Z00000254	In-Hex Wrench-2.5	1	Q235-A	
15	FF1-CN521N00000194	Screw(M4X10)	2	SUS304	
14	FF1-CN521Z00000212	Protect Cover for Inwall(47#)	1	PA	
13	FFZZ0021-0027699M C	Body for Signature Concealed Shower	1	GkMs60Fk	
12	FF1-CN521N00000268	Screw(M4X20)	2	SUS304	
11	FF1-CN521K00000034	Foam Washer(4*8*570mm)	1	E.V.A	
10	FF1-CN521F0007099P	Fix plate for Signature Concealed Shower	1	ABS	
	FF1-CN521G00000291	O-ring 7X2	4	NBR	
9	FF1-CN521J00000214	Fix Pin	4	HPb59-1	
	FF1-CN521F0007250P	Escutcheon for Signature Concealed Shower	1	ABS	CP
8	FF1-CN521G0004699R	Sealing-ring for Signature Cartridge Bushing	1	NBR	
7	FF1-CN521G00000143	O-ring (29.82*2.62)	1	NBR	
6	FF1-CN521F0008750P	Cartridge Cover for Signature Concealed	1	ABS	CP
5	FF1-CN521N0007399B	35mm Cartridge Lock Nut	1	HPb59-1	
4	FF1-CN521C0002499P	Grohe 35mm Cartridge	1	Assembly	
3	FF1-CN521N00001099	Screw M5X6	1	SUS304	
2	FF1-CN521Z00000086	Index Button	1	ABS	
1	FF1-CN521L00006550X	Signature Exposed B&S Mixer Handle	1	ZZnAl4-1	CP
No.	Part No.	Part Name	QTY	Material	Finish

Technical requirements

1. Cartridge tightening torque is 8~10 N.m and the other torque is implemented according to the (W109.1520 assembly torque specification);
2. O-ring coated lubricating oil DC111;
3. The product should meet GB 18145 and (W110.0504 Final inspection standard-faucet);

REV	DESCRIPTION	DATE	NAME

DESIGNED	韦振明	2022.11.10	TITLE
CHECKED	付大心	2022.11.14	REF
APPROVED	李海	2022.11.14	Signature Concealed Shower Only Mixing Valve
SCALE	MATERIAL	WEIGHT	DWG NO.
3:5	Assembly		FFAS1722-709500BC0

