

CCAS6519-3120410F0

Lynbrook

Lynbrook Int WH Urinal 0.5-AC EX

STYLE SEGMENT

- Modern

KEY SPECIFICATIONS

- Product Description: NA
- Product Dimensions: 425 x 372 x 780
- Installation Type: Wall Hung
- Flush Valve Integrated: Yes
- Flushing Mechanism: Spreader
- Flush Volume: 0.5
- Inlet Hole Location: Back
- Inlet Spud Diameter (mm): G1/2
- Outlet Connection Diameter (mm): 46
- Operating Pressure - Dynamic (MPa): 0.05
- Operating Pressure - Static (MPa): 0.75
- Material: Vitreous China
- Colour: White Heat II
- Power Source: AC



SHIPPING WEIGHT

- Net Weight: 32
- Gross Weight: 38

KEY TECHNOLOGIES AND FEATURES

HYGIENE

- Aqua Ceramic
- Splash-Free Flushing

COMFORT

- Right Height

CONVENIENCE

- Hands Free Operation

DURABILITY

- Complies with American Standard Quality Standards

SUSTAINABILITY

- Water-Saving

SAFETY

- Complies with American Standard Quality Standards

OTHERS

- NIL

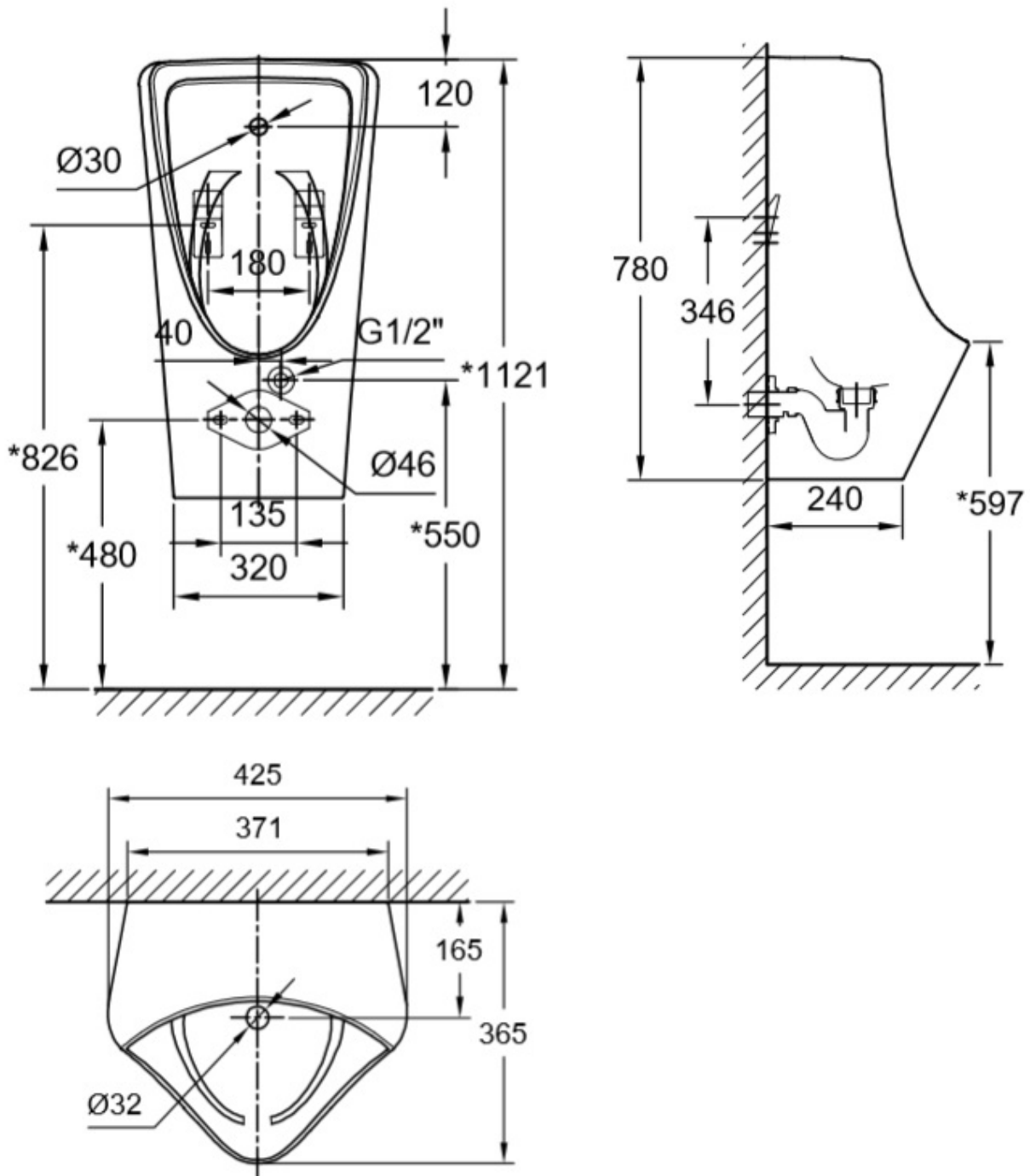
STANDARDS AND CERTIFICATIONS

- GB/T 6952-2015

CCAS6519-3120410F0

Lynbrook

Lynbrook Int WH Urinal 0.5-AC EX



CCAS6519-3120410F0

Lynbrook

Lynbrook Int WH Urinal 0.5-AC EX

Product	Description	NA
	Dimensions (mm)	425 x 372 x 780
	Weight (kg)	32
Installations	Type	Wall Hung
Flush	Flush Valve Integrated	Yes
	Flush Valve Included	Yes
	Mechanism	Spreader
	Volume	0.5
Inlet	Hole Location	Back
	Spud Diameter (mm)	G1/2
Outlet	Connection Diameter (mm)	46
	Connection Type	flange
Operating Pressure	Dynamic (MPa)	0.05
	Static (MPa)	0.75
Material & Color	Material	Vitreous China
	Color	White Heat II
Power	Source	AC
	Usage	AC100-240V, 50-60Hz
Trapway	Type	P Trap

CCAS6519-3120410F0

Lynbrook

Lynbrook Int WH Urinal 0.5-AC EX

Trapway	Type	P Trap
Sensor	Detect Distance	65+/-5 base on 30x31 white board cm
	Detect Time	3 s
IP Rating (Ingress Protection)	Rating	IPX7
Batteries	Type	N/A
	Number of Batteries	0
	Lifetime (cycles)	N/A
	Included	No
Shipping	Net Weight (kg)	32
	Gross Weight (kg)	38
	Dimensions (mm)	830 x 450 x 430