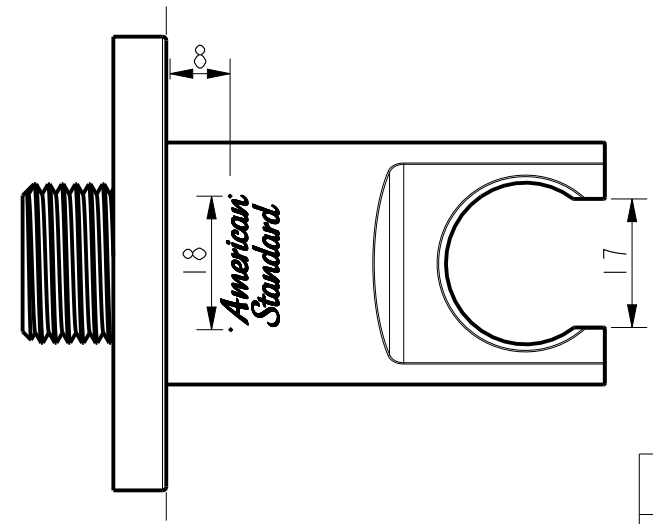
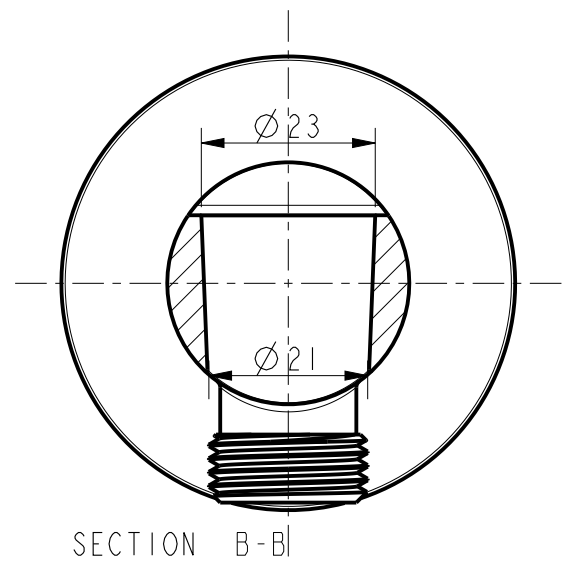
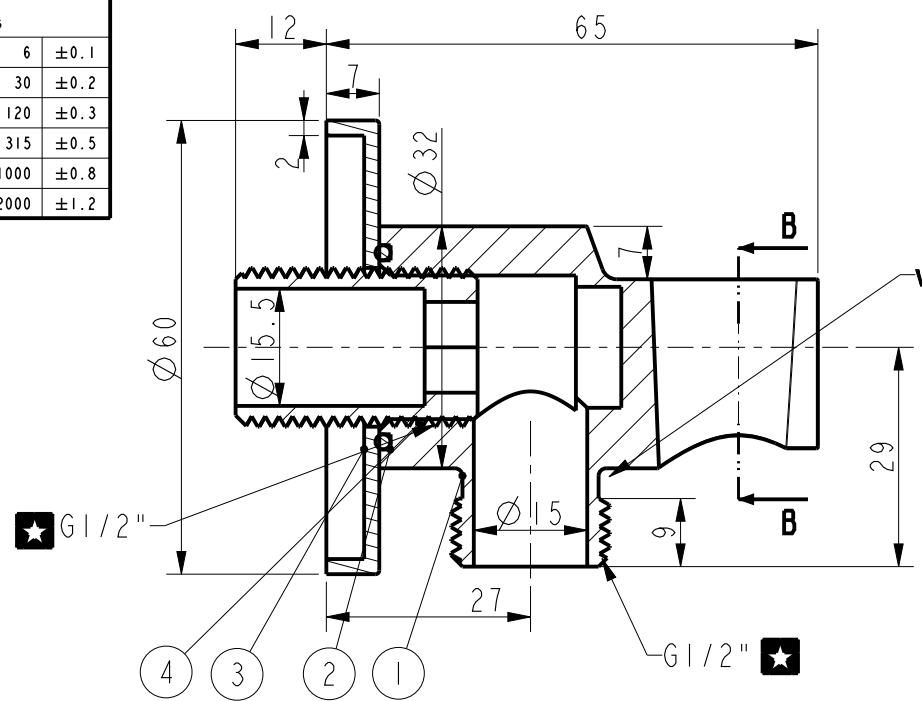


| Tolerance, Unless<br>Otherwise Stated. Is |      |  |  |
|---|------|--|--|
| Above 0.5 to and including 6              | ±0.1 |  |  |
| Excess 6 to and including 30              | ±0.2 |  |  |
| Excess 30 to and including 120            | ±0.3 |  |  |
| Excess 120 to and including 315           | ±0.5 |  |  |
| Excess 315 to and including 1000          | ±0.8 |  |  |
| Excess 1000 to and including 2000         | ±1.2 |  |  |



| NO. | Description | Material | QTY | Remark  |
|-----|-------------|----------|-----|---------|
| 4   | Connctor    | HPb59-1  | 1   | Plating |
| 3   | Cover       | HPb59-1  | 1   | Plating |
| 2   | O Ring 23*2 | NBR      | 1   |         |
| 1   | Body        | HPb59-1  | 1   | Plating |

|          |          |        |   |
|----------|----------|--------|---|
| DESIGNED |          |        | TITLE   |
| CHECKED  |          |        | REF   |
| APPROVED |          |        | <b>Wall Outlet with Holder- Round (G1/2")</b> |
| SCALE    | MATERIAL | WEIGHT | DWG NO.                                       |
| 1:1      |          |        | <b>FFAS9141-000500BC0</b>                     |

| REV | DESCRIPTION | DATE | NAME |
|-----|-------------|------|------|
|     |             |      |      |

**American Standard**